

# VILLAGE of PALATINE

## SPRING CLEANUP WEEK IS MAY 17-22, 2019

Take advantage of Palatine's annual spring cleanup week. Beginning on Friday, May 17, 2019, residents can place refuse out in advance of the scheduled collection day for the following week.

All refuse items placed at the curb must be prepared according to standard specifications and weekly collection program guidelines. For information on the Village of Palatine's Refuse, Yard Waste and Recycling Program, please visit [palatine.il.us](http://palatine.il.us) and search 'refuse & recycling'.

Please note that construction debris must be properly bundled and is limited to a maximum volume of two cubic yards. Only one bulk item that is too large to be bagged, such as furniture, will be collected. Items restricted from cleanup week include appliances, tires, paints, household chemical waste and electronics. Please consider recycling, reusing, or donating these items instead.

The Solid Waste Agency of Northern Cook County (SWANCC) provides the Green Pages Reuse and Recycling Directory, a useful resource for residents seeking locations and outlets to dispose of items they no longer need. This directory provides information on reuse opportunities for books, clothing, office equipment, sporting goods, toys and many other materials. It also provides education on various aspects of recycling and waste, and features sections for appliances, batteries, construction debris, electronics, office machines, cartridges, metals, motor oil and other items. To access Green Pages information, visit [swancc.org](http://swancc.org) or call **847-724-9205**.

For additional information, please call the Environmental Health Division at **847-359-9042**.



## IN *this* ISSUE

Special Material Drop Off .....	2
Sidewalk Replacement .....	3
Community Events .....	4
Summer Event Guide .....	5-7
Scott's Law .....	8
Child Safety Seats .....	9
Water Quality Report .....	10
Hometown Pride Awards .....	11
Food Inspection Changes .....	12
Life Jacket Loaner Program .....	13
Electronics Recycling Event .....	14
Ruse Burglaries .....	15

## PALATINE FARMERS' MARKET OPENS FOR THE SUMMER SEASON MAY 4, 2019



The outdoor Palatine Farmers' Market, presented by Palatine Sister Cities, opens for its 28th summer season on Saturday, May 4, 2019. This kick-off event will include the Winston Campus Mariachi Band celebrating Cinco de Mayo, in addition to a wide variety of Mexican cuisine for sale! Come out and greet all the favorite vendors and meet some new top-quality additions to the market!

The Farmers' Market is open every Saturday morning in the Metra train station parking lot, 137 W. Wood Street in downtown Palatine, May through October from 7:00 a.m. until 1:00 p.m. The market requires that any produce sold be picked within 24 hours, making these items fresher than what can be found at local grocery stores. The atmosphere is friendly and casual, with local musicians, children's activities and tables hosted by local civic groups. Vendors feature a variety of fresh fruits and vegetables, flowers, oils, spices, bakery items, natural pet treats and so much more! For more information, visit [palatinesistercities.org](http://palatinesistercities.org).

# VILLAGE OF PALATINE

200 E. Wood St.  
Palatine, IL 60067  
www.palatine.il.us  
village@palatine.il.us

VILLAGE HALL HOURS  
8 a.m. to 5 p.m.,  
Monday through Friday

## VILLAGE PHONE NUMBERS

Emergency.....911  
Village Hall.....358-7500  
TDD (Emergency).....911  
Village Action Line .....705-5200  
Community Services .....359-9042  
Fire (Non-Emergency)....202-6340  
Police (Non-Emergency) 359-9000  
Public Works .....705-5200

### Mayor

Jim Schwantz.....359-9007  
jschwantz@palatine.il.us

### Village Clerk

Margaret R. Duer.....359-9051  
mduer@palatine.il.us

### District 1

Tim Millar.....894-0001  
tmillar@palatine.il.us

### District 2

Scott Lamerand.....894-0002  
slamerand@palatine.il.us

### District 3

Doug Myslinski.....894-0003  
dmyslinski@palatine.il.us

### District 4

Greg Solberg.....894-0004  
gsolberg@palatine.il.us

### District 5

Kollin Kozlowski.....894-0005  
kkozlowski@palatine.il.us

### District 6

Brad Helms .....894-0006  
bhelms@palatine.il.us

### Village Manager

Reid Ottesen.....359-9031  
rottesen@palatine.il.us

*All phone numbers are (847) area code unless otherwise noted.*

## DROP-OFF PROGRAMS FOR SPECIAL MATERIALS

The Village of Palatine, in cooperation with the Solid Waste Agency of Northern Cook County (SWANCC), is pleased to offer free drop-off programs for residentially-generated special materials, including pharmaceuticals, sharps, mercury thermometers, compact fluorescent light (CFL) bulbs and fluorescent light tubes. Details about specific materials are listed below.

Many of the materials collected as part of SWANCC's residential special material programs have recoverability, recyclability or require special disposal due to environmental concerns. Only residential waste will be accepted. Waste from businesses, schools or other institutions will not be accepted. For specific drop-off guidelines, please visit SWANCC at **swancc.org** or call **847-724-9205**.

### Collection Location and Times:

**Village of Palatine, 200 E. Wood Street  
Village Services Counter – First Floor  
Monday - Friday 9:00 a.m. to 4:00 p.m.**



### Pharmaceuticals

Accepted pharmaceuticals include over-the-counter, non-controlled medications. No controlled substances will be accepted. See below for acceptable and unacceptable items. Pharmaceuticals must be identifiable and in the original, labeled container. Personal information such as name, address or phone number on the prescription label can be blackened out.

- **Acceptable Items:** Unused and expired prescription medications, prescription cough syrup, prescription eye or ear drops, unused and expired over-the-counter medications.
- **Unacceptable Items:** Controlled substances and non-prescription liquids.

### Sharps/Needles

Bring sharps in a red biohazard container, a rigid plastic laundry detergent bottle with a lid, or a coffee can with a lid. Containers must have a clear visible lid or be opened by the resident upon request to view contents. All sharps should be put into containers at home. No loose or bagged sharps will be accepted. The Environmental Health Division will also provide a free quart or gallon-sized sharps container to residents who administer home-injections, while supplies last. When the sharps container is full, the resident should bring the container back for proper disposal.

### Mercury Thermometers, Thermostats and Wall Switches

Mercury containing items such as thermometers, thermostats and wall switches will be accepted. All mercury containing items should be sealed in a plastic bag.

### Compact Fluorescent Light Bulbs and Fluorescent Tubes

Mercury containing light bulbs of all shapes and sizes, such as compact fluorescent light (CFL) bulbs, will be accepted. Fluorescent light tubes up to 4 feet in length that are sealed in a plastic bag will also be accepted. Do not bring any incandescent bulbs, as they contain no mercury and can be disposed of in the garbage. Broken light bulbs will not be accepted.

Contact the Environmental Health Division at **847-359-9042** with any questions.



## SIDEWALK REPLACEMENT AND 50/50 SIDEWALK PROGRAMS

The Public Works Department conducts two sidewalk programs each year; the Sidewalk Replacement Program, and the 50/50 Sidewalk Program. Construction for these programs typically runs from early summer to early fall.

The Sidewalk Replacement Program is intended to identify and eliminate the most severe tripping hazards, and cycles through a different section of the Village each year. The program will be conducted in two phases this year. The first target area is generally west of Quentin Road, from Dundee Road to Euclid Avenue, and south of Illinois Avenue, from Hicks Road to Quentin Road. The second area is generally from Dundee and Rand roads north to Lake Cook Road between Hicks Road and Route 53. To view a map of the replacement sections, visit [palatine.il.us](http://palatine.il.us) and search 'sidewalk replacement program map'.

The 50/50 Sidewalk Program addresses sidewalks that are uneven, severely cracked or deteriorated, or do not meet specific safety standards. The cost is shared on a 50/50 basis between the Village and the homeowner - each contributing half of the replacement cost. The homeowner's cost is approximately \$75 for a typical sidewalk square. Applications are accepted on a first-come, first-served basis, and the deadline for submission is June 1, 2019.

For more information about these programs, or to obtain a copy of the 50/50 Application, contact Public Works by calling **847-705-5200** or visit [palatine.il.us](http://palatine.il.us) and search 'sidewalk program'.

## PURCHASE VEHICLE STICKERS AND ANIMAL LICENSES ONLINE

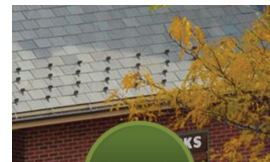
Village of Palatine Vehicle Stickers and Animal Licenses are on sale beginning May 1, 2019. Both can be purchased online, or by mail/in person at Palatine Village Hall.

Log on to [palatine.il.us](http://palatine.il.us) and click on the 'Online Payments' icon and choose 'Vehicle Sticker or Animal Licenses'. Follow the instructions and Vehicle Stickers and Animal Licenses will be mailed promptly. They may also be purchased in person Monday through Friday from 8:00 a.m. – 5:00 p.m. or by mail (only checks will be accepted) at Palatine Village Hall, 200 E. Wood Street, Palatine, Illinois 60067.

The last day to make a purchase in person without penalty is Friday, June 28, 2019. The last day to purchase online without penalty is Sunday, June 30, 2019.

To avoid penalties or citations for the 2019-2020 year, Vehicle Stickers must be purchased and affixed to vehicles by June 30, 2019. The appropriate late fees will be charged beginning July 1, 2019. To avoid delays, please consider paying online or by mail.

Contact Village Hall with any questions by calling **847-358-7500**.



Online Payments

## MAY IS NATIONAL STROKE AWARENESS MONTH

May is National Stroke Awareness Month. A stroke is a brain attack that occurs when a blood clot blocks an artery or a blood vessel breaks, interrupting blood flow to an area of the brain, which causes brain cells to begin to die. This medical condition is an emergency and acting quickly can tremendously reduce its physical impacts and survival rates. The Palatine Fire Department wants residents to know that strokes can happen to anyone, at any age, and at any time. In the U.S., stroke is the fifth leading cause of death, killing nearly 130,000 people each year. Over the last decade, there has been a 44% spike in the number of young Americans (under 45 years) hospitalized due to stroke, and according to research, 73% of them were not familiar with stroke symptoms and the subsequent need for urgent medical attention.

Recognizing stroke symptoms can be easy if you remember to think **FAST**:

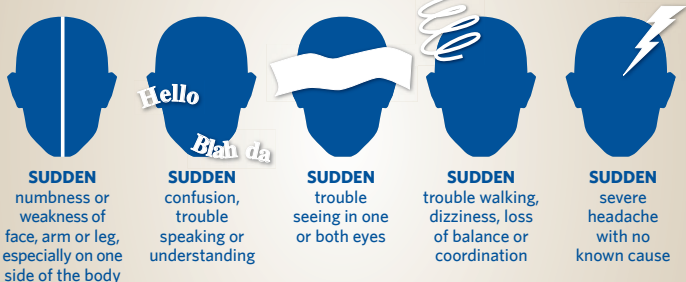
**F=Face** Ask the person to smile. Does one side of the face droop?

**A=Arms** Ask the person to raise both arms. Does one arm drift downward?

**S=Speech** Ask the person to repeat a simple phrase. Does the speech sound slurred or strange?

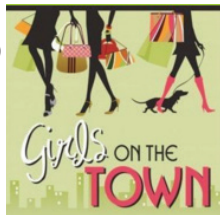
**T=Time** If any of these signs are observed call 9-1-1 immediately.

The National Stroke Association's mission is to reduce the incidence and impact of stroke. It is also the only national organization in the U.S. that focuses 100% of its efforts on education and programs focused on stroke prevention, treatment, rehabilitation, and support for everyone impacted by stroke. Learn more at [stroke.org/nsam](http://stroke.org/nsam).



# COMMUNITY EVENTS

**Girls on the Town**  
**Friday, May 3, 2019**  
 Downtown Palatine  
 (Brockway Street and  
 Slade Street)



The Downtown Palatine Business Association (DPBA) hosts this yearly kick off to spring event - Girls on the Town! The downtown merchants open their doors on this fun and festive Friday night, and provide an opportunity for guests to experience all that the DPBA members have to offer. Event giveaways, specials and raffles are all part of the fun, along with hors d'oeuvres and wine tastings at select locations! Passports are just \$5. For more information, visit [downtownpalatine.org](http://downtownpalatine.org).



**Summer Farmers' Market**  
**Every Saturday, May 4 through  
 October 26, 2019**  
 Palatine Train Station parking lot  
 (137 W. Wood Street)

The Sister Cities Association of Palatine invites area residents to come out each Saturday between 7:00 a.m. and 1:00 p.m. from May 4 - October 26, 2019 to browse the Palatine Farmers' Market for fresh farm produce, organic meats and eggs, breads, soaps, pet treats, sweets, crafts, musical entertainment and more! Visit [palatinesistercities.org](http://palatinesistercities.org) for more information.

**Cop on Top**  
**Friday, May  
 17, 2019**  
 Dunkin' Donuts  
 (801 E. Dundee  
 Road and  
 231 W.  
 Northwest Highway)



Stop by either Dunkin' Donuts location in Palatine to support 'Cop on Top' from 5:00 a.m. to 1:00 p.m. on Friday, May 17, 2019. Palatine Police, in partnership with law enforcement professionals across the country, will be on rooftops of Dunkin' Donuts. Local residents are invited to stop by, cheer on the officers, and donate to Special Olympics. All funds raised benefit Special Olympics Illinois athletes.

**Memorial Day Parade  
 and Ceremonies**  
**Monday, May 27, 2019**  
 Starts at Hillside  
 Cemetery (Smith Street  
 north of Colfax Street)



The American Legion Post 690 is sponsoring the Memorial Day Parade and other activities on Monday, May 27, 2019 beginning at 10:00 a.m. with a service at Hillside Cemetery on Smith Street. The annual parade will start at 10:15 a.m. at Cornell Avenue and Smith Street. Following the parade at 11:00 a.m. there will be a short program at the Veterans Memorial in Community Park, and another ceremony at the Legion Memorial in Towne Square beginning at 12:15 p.m. Community members are invited to the American Legion (across the street from Towne Square) following the ceremonies. For more information, or if your group would like to participate in the parade, call the American Legion weekdays after 12:00 p.m. at **847-359-1606**.

**Fun Run, Walk or Stroll**  
**Sunday, June 2, 2019**  
 Palatine Police Headquarters  
 (595 N. Hicks Road)

This year's Special Olympics Illinois 'Fun Run, Walk or Stroll' is on Sunday, June 2, 2019, from 9:00 a.m. until noon at the Palatine Police Headquarters. There is no registration fee, donations will be accepted, and merchandise will be available for purchase before the race. For more information, call Palatine Police at **847-359-9000**.

**St. Nectarios  
 Greek Fest**  
**Friday, June 21 through  
 Sunday, June 23 2019**  
 St. Nectarios Greek  
 Orthodox Church (133 S.  
 Roselle Road)



The popular event has celebrated Greek culture for more than 30 years. It features authentic Greek food, pastries, wine and beer. Along with food, enjoy dancing, music, live performances, games, and a drive-through. Visit [stnectariosgoc.org](http://stnectariosgoc.org) for more information.

**Palatine Area Chamber of Commerce  
 & Palatine PD Boosters  
 Golf Outing**  
**Friday, August 16, 2019**  
 Palatine Hills Golf Course  
 (512 W. Northwest Highway)



The Palatine Chamber of Commerce (PACC) and Palatine Police Department Boosters are teaming up for an outing at Palatine Hills Golf Course! This event is open to the public and golfers of all skill levels are welcome to play. The event includes 18 holes of golf, breakfast, lunch on the course (soft drinks and adult beverages included), friendly wager-games, and an after party with heavy appetizers, golfer prizes and raffles. This end of summer event is the perfect opportunity for local businesses and the community to play together! Visit [palatinechamber.com](http://palatinechamber.com) for more information.

**Feet Fest**  
**Sunday, August 25 2019**  
 Towne Square (Slade  
 Street and Greeley  
 Street)



Calling all walkers and runners—join the Street Fest celebrations by navigating your way through exciting obstacles over a 2-mile course starting at Towne Square and winding through the surrounding neighborhood. Visit [palatineparks.org](http://palatineparks.org) for the most up-to-date information and requirements. **\*All dates and times are subject to change.**

View information about these events

**Hometown Fest**  
 (July 3-7)  
 on page 5

**Palatine Street Fest**  
 (August 23-25)  
 on pages 6-7

**Scarecrows on  
 Parade** (scarecrow  
 pickup begins August 19)  
 on page 7

**Electronics Recycling/Paper  
 Shredding Event** (July 20)  
 on page 14







**July 3 – 7, 2019**

## NIGHTLY LIVE MUSIC!



MIKE & JOE



AMERICAN ENGLISH



HAIRBANGERS BALL



WEDDING BANNED

**Check [HometownFest.org](http://HometownFest.org) for more  
bands, schedule details and updates!**

*Schedule subject to change*

## DAILY ACTIVITIES

### JULY 3RD

Kathleen A. Blanck Memorial

Special Needs Carnival . . . . 1:00 pm – 3:00 pm

### JULY 4TH

Kickball Tournament Starts . . . . . Time TBD

### JULY 5TH

Fireworks . . . . . Dusk

### JULY 6TH

Parade . . . . . 11:00 am

Art, Craft & Business EXPO . . . Noon – 8:00 pm

Kickball Tournament Finals . . . . . Time TBD

### JULY 7TH

Art, Craft & Business EXPO . . . Noon – 5:00 pm

FREE Family Day Activities . . 1:00 pm – 4:00 pm

**Food, beverages, and carnival open daily.  
Doors open to the public July 3rd at 5:00 pm.**

*Hometown Fest is brought to  
you by the Palatine Jaycees*





**August 23 - 25, 2019**

## Festival Hours

**Friday, August 23**

5:00 p.m. – Midnight

**Saturday, August 24**

11:00 a.m. – Midnight

**Sunday, August 25**

11:00 a.m. – 6:00 p.m.

## Kids Zone Hours

**Saturday, August 24**

11:00 a.m. – 6:00 p.m.

**Sunday, August 25**

11:00 a.m. – 5:00 p.m.

Visit [palatinestreetfest.com](http://palatinestreetfest.com) for the most up-to-date information, or email [streetfest@palatine.il.us](mailto:streetfest@palatine.il.us) with any questions or comments.

*friday, august 23*

## MAIN STAGE ENTERTAINMENT

9:30 p.m.-11:30 p.m. Sixteen Candles



Additional acts are To Be Announced please visit [palatinestreetfest.com](http://palatinestreetfest.com) for updated information.

*saturday, august 24*

**Farmers' Market** 7:00 a.m.- 1:00 p.m.  
(Palatine Train Station)

**Cycle Fest** 9:00 a.m.  
(departs from Towne Square)

**BINGO** 1:00 p.m.  
(in the American Legion Hall Parking Lot)

**Entertainment** TBA

*sunday, august 25*

**Feet Fest 3K** 9:00 a.m.

**Family Fun Run/Walk**  
(Towne Square)

**Sweet Pea Pet Parade** 11:30 a.m.  
(departs from Towne Square)

Sunday Bands are a Tribute to Woodstock's 50th Anniversary  
**Travelin Band** 12:00 p.m. to 1:30 p.m.  
(Main Stage)

**Whos Who** 2:00 p.m. to 3:30 p.m.  
(Main Stage)

**Mr. Blotto** 4:00 p.m. to 6:00 p.m.  
(Main Stage)

## Street Fest Partners

Lakeshore Beverage  
The Home Improvement Network  
America's Bath Company  
Grade Power Learning  
Chiro One

*Only sponsors confirmed by date of publication are included.*

*\*All event information is subject to change*



# Saturday

11:00 a.m. – 6:00 p.m. Kids Activities,  
Games & Demonstrations, in Towne Square



# Sunday

11:00 a.m. – 5:00 p.m. Kids Activities,  
Games & Demonstrations, in Towne Square



## Kids Zone

*Parking is FREE all weekend at the Gateway Center Parking Deck located at Smith and Colfax Streets, or in the parking lots north of the railroad tracks. There will be NO public parking available (except for handicapped parking) on the south side of the railroad tracks, north of Palatine Road between Smith Street and Plum Grove Road. Visit [palatinestreetfest.com](http://palatinestreetfest.com) for more information.*

*Due to large crowds present during Street Fest weekend, the Village strongly discourages riding bicycles throughout the festival area (along Slade Street). Coolers, backpacks and pets are not allowed inside the festival area. Pets are only welcome during the Sweet Pea Pet Parade.*

*Please note that the only method of payment accepted at the festival is CASH; ATM's are located in various businesses along the festival area. Carpooling to Street Fest is easy, too! Ask the driver to drop you off at the Palatine Metra Train Station, 137 W. Wood Street. Visit [palatinestreetfest.com](http://palatinestreetfest.com) for more information.*

*\*All event information is subject to change*

## SCARECROWS ON PARADE

Enter the Village of Palatine Beautification Commission's 12th annual scarecrow decorating contest which, is part of the Rotary Club's 2019 Oktoberfest Festival. Home Depot in Palatine will provide only 20 scarecrow skeletons, so don't wait. Call the Palatine Public Works Department at (847) 705-5200 to reserve one today! Any Palatine family, business, nonprofit organization, school affiliate, sports affiliate, homeowners' association, faith or civic group can participate.

### SCARECROW SKELETON PICKUP:

Starts Monday, August 19

Public Works Facility | 148 W. Illinois Ave  
Monday through Friday, 8:00 a.m. until 2:30 p.m.

### JUDGING AND AWARD CEREMONY:

**NEW FOR 2019:** This year, there will be two judging categories with prizes awarded in each category. The Youth Category will be for kids and youth groups with members 17 years old and younger. The Adult Category will be for adults and adult organizations with members 18 and older. Please drop off scarecrows at the corner of Brockway and Slade Streets by 11:00 a.m. on Saturday, September 21. Judging will take place at 12:00 p.m. The Award Ceremony will be held at 12:30 p.m. in the Oktoberfest Main Tent. All of the participating scarecrows will remain on display along the rail walk fence.

For more information, call Public Works at 847-705-5200 or visit [palatine.il.us](http://palatine.il.us) and search 'scarecrows on parade'.

## VILLAGE BLOOD DRIVE ON AUGUST 15, 2019

The Palatine Board of Health is hosting a Blood Drive on Thursday, August 15, 2019 from 12:00 p.m. to 6:00 p.m. at the Palatine Village Hall, 200 E. Wood Street in Room Community B. The blood drive will be conducted by Vitalant (formerly known as LifeSource).

Donating blood is one of the easiest ways to give back to the community. If you have never donated blood before, the Palatine Board of Health encourages residents to try! The actual donation for whole blood takes approximately 10-15 minutes, and the entire whole blood donation process, from registration to post-donation refreshments, takes about one hour.

Each year, nearly 5 million Americans need blood transfusions. Blood helps trauma and burn patients, premature infants, heart surgery patients, organ transplant recipients and those fighting cancer, among others.

For more information on the donation process or to schedule an appointment for the blood drive, contact Vitalant at **877-258-4825** or visit [vitalant.org](http://vitalant.org). Blood Drive donor walk-ins are always welcome.

For additional blood drive events throughout the year, visit [palatine.il.us](http://palatine.il.us) and search 'blood drive'.





# 5TH GRADE FIRE SAFETY PROGRAM

The Palatine Fire Department's Public Education Program provides fire safety talks for elementary students attending District 15 schools in Palatine. Each year, 5th grade students are invited to Palatine Fire Station 84 for a field trip designed to reinforce fire safety messages that students also receive through ongoing education by the Fire Department from kindergarten through 4th grade. Students are provided with the opportunity to increase their fire safety knowledge and meet firefighters who respond to emergencies in their hometown. The goal is to give students fire safety knowledge they would need to help keep them stay safe - both in and out of school. For more information on this program visit [palatine.il.us](http://palatine.il.us) or call **847-202-6340**.

***Public Education is the Cornerstone of the Fire Service***



## SCOTT'S LAW: ALWAYS REMEMBER TO 'MOVE OVER'

Scott's Law was named after Lieutenant Scott Gillen of the Chicago Fire Department who was struck and killed by an intoxicated driver while assisting at a crash on the Dan Ryan Expressway.

Scott's Law, also called the 'Move Over' law, requires that when motorists approach any stationary vehicle stopped along the roadway that is displaying flashing emergency lights, including commercial trucks and cars, drivers should do the following:

- Reduce speed
- Change lanes if possible; yield the right-of-way by changing lanes away from the stationary vehicle
- Proceed with caution due to safety and traffic conditions

*The law is no longer limited to only emergency response vehicles, such as police cruisers, ambulances, and fire trucks.*

A person in violation of Scott's Law is committing an offense punishable by a fine of up to \$10,000. A Scott's Law charge may be upgraded to an aggravated (felony) charge if the person committing the offense was under the influence of alcohol, drugs, or intoxicating compounds. If this is the case, a person's driving privileges will be:

- Suspended for 90 days to one year if the violation results in damage to the property of another person;
- Suspended for 180 days to two years if the violation results in injury to another person;
- Suspended for two years if the violation results in the death of another person.





## DON'T WAIT: CHECK THE DATE

Age matters when it comes to smoke and carbon monoxide alarms. The Palatine Fire Department, in cooperation with the National Fire Protection Agency (NFPA) and the U.S Fire Administration, encourages everyone to check the manufacture date of their smoke and carbon monoxide alarms. It is recommended that all smoke and carbon monoxide alarms older than 10 years be replaced. Follow the below steps when checking an alarm's date of manufacture.

**Step 1:** Remove the alarm from the wall or ceiling.

**Step 2:** Look at the back of the alarm for the date of manufacture. If there isn't one, the alarm needs to be replaced.

**Step 3:** If the date of manufacture is prior to 2010, replace the alarm.

**Step 4:** If the date of manufacture is after 2010, re-install it on the wall or ceiling.

The NFPA reports that, on average, seven people die in the U.S. each day due to home fires. Make a difference by making sure that homes have working smoke and carbon monoxide alarms and individuals don't become a statistic! Check smoke and carbon monoxide alarms today.

For more information call the Fire Prevention Division at **847-359-9029**, visit **palatine.il.us** or **NFPA.org**.



## CHECK AND REGISTER CHILD SAFETY SEATS

The Palatine Police Department has certified technicians who can check child car seats to ensure they are properly installed. Safety checks are free and are based on technician availability. To schedule an appointment, please call the Palatine Police Department at **847-359-9000**.

Parents can register their new or currently used car seat, ensuring that they are promptly notified about future recalls and guided through the repair process, as needed.

### How to Register:

- Register online with the car seat manufacturer, using the information found on the information sticker on the car seat.
- Fill out the registration card that came with the car seat. It's pre-populated with the car seat's information. Mail the card; no postage is required.

**DON'T DELAY!**  
Register your  
car seat today.



### Tips to Register Car Seats:

- Residents can also register car seats online at **safercar.gov/parents** and click on 'car seat'. If car seat information is handy, registration can take less than two minutes.
- Take a photo of the car seat label and save it on a cell phone to ensure the information is available, when needed.

### Find Out if Your Car Seat is Recalled

Visit the National Highway Traffic Safety Administration's (NHTSA) website at **nhtsa.gov/** to check if a car seat has been recalled. The manufacturer name, model number and manufacture date are needed for this information.

A label on the car seat will likely have all this information in one place.

Source: **safekids.org**

## CPR TRAINING FOR RESIDENTS AND BUSINESSES

The Palatine Fire Department offers Cardio Pulmonary Resuscitation (CPR) classes for residents and business located in the Village of Palatine. Each year, there are nearly 326,000 cases of sudden cardiac arrests in the U.S. outside of hospitals; 88% of cardiac arrests occur at home. Currently, 70% of Americans may feel helpless to act during a cardiac emergency because they do not know how to administer CPR, or their training has significantly lapsed. The American Heart Association Heartsaver® CPR AED class is a great way for anyone with limited or no medical training to learn CPR, as well as learn how to use an automated external defibrillator (AED). An AED is a portable electronic device that diagnoses life-threatening cardiac arrhythmias of ventricular fibrillation and helps to treat them through defibrillation. For more information about CPR classes, call **847-202-6340** or visit **cpr.heart.org/**.



## KEEP THOSE CREEKS CLEAN AND NATURAL



Today, creeks bear little resemblance to their natural state. Originally, they meandered, with broad areas that stored floodwater when needed. Early farming straightened creeks and filled low areas to maximize cropland, and urban development continued this practice. Fortunately, in the 1970s, the benefits of creeks and floodplains were realized and laws were passed to regulate construction in them. Now the focus is to improve water quality and preserve or reverse the loss of the natural habitat. As the Village undertakes creek maintenance projects, stream banks are restored, and native plants are added, all of which enhance water quality and natural habitats.

Unfortunately, some people view creeks as a place to dispose of yard waste. After all, it's no different than what grows there naturally and eventually decays. **WRONG!** It's illegal to deposit any debris, including branches, leaves or dirt, into or next to creeks, ponds, ditches or other areas that collect storm water. Besides being unsightly, this can cause blockages that aggravate flooding. Material left on banks can kill the vegetation under it, causing soil erosion.

Dumping also impairs water quality. The Clean Water Act's goal is to make all waterways fishable and swimmable. Though few people may want to swim or fish in Salt Creek or Buffalo Creek, their water quality affects the Des Plaines and Illinois rivers into which they flow. Phase 2 of the Act focuses on polluted storm water runoff. Sources can be oils, chemicals and debris from streets or parking lots, fertilizers and pesticides, soil and other contaminants from construction, and dumping of chemicals and other wastes into creeks or sewers. Village Ordinance prohibits discharges to the storm sewer system of anything but storm water. This includes motor oil, antifreeze and other automotive fluids, paints, solvents or cleaning fluids. Water from processes such as carpet cleaning, as well as animal waste are also not permitted. All inlets and drains discharge into a pond or creek. Anyone found discharging into waterways or into the storm system is liable to be prosecuted and subject to a penalty fine.

**For more information or to report illegal dumping or discharges, call Public Works at 847-705-5200.**

## 2018 WATER QUALITY REPORT ONLINE

Each year, the Village of Palatine provides an Annual Water Quality Report (Consumer Confidence Report) to its customers with details on how Palatine's water quality compares to established Federal and State drinking water standards - and about the source and quality of the drinking water delivered to the community in 2018. To be more environmentally responsible, this report is no longer printed, but will be *available online after June 30, 2019*. To view the 2018 Consumer Confidence Report, visit the Villages' website at <https://palatine.il.us/2018CCR>.

Customers may print a copy of the report from the Village website or request a copy from the Public Works Department at **847-705-5200**.

**ATTENTION LANDLORDS, BUSINESSES, SCHOOLS AND OTHER GROUPS:** Please share this information with tenants, students and other water users at your location who are not billed customers.

## HYDRANT FLUSHING HELPS ENSURE WATER QUALITY

The Public Works Department conducted its annual 'flushing' of fire hydrants earlier this spring. This process moves water through the pipelines at a fast rate to clean the lines, clear stagnant water, identify broken hydrants, and ensure water delivered to homes and businesses

is of the highest quality. Residents who are concerned that this process wastes water can be assured that Public Works only flushes lines when necessary as part of protecting public health, by providing safe, high quality, consumable water.

For questions about hydrant flushing, call Public Works at **847-705-5200**.





## NOMINATE PROPERTIES FOR HOMETOWN PRIDE AWARDS

The Village of Palatine Beautification Commission is again hosting the Hometown Pride Awards to honor residential and business properties in Palatine that display attractive landscaping and exceptional curb appeal. Only the front of properties visible from the street will be evaluated. Criteria includes overall appearance, design, maintenance, color and diversity.



One 4"x6" photograph taken within the last 30 days must accompany the nomination form, which can be downloaded from the Village's website. Simply fill out the form and enclose a photograph to be entered in the competition. Individuals can nominate a residence or business by emailing the form to [ekoutas@palatine.il.us](mailto:ekoutas@palatine.il.us) and attaching a digital photo, or by mailing/dropping off a paper version of the form and photo to the Public Works Department, c/o Hometown Pride Awards, 148 W. Illinois Avenue, Palatine, Illinois 60067 by Friday, July 19, 2019. Judging will take place Monday, July 22, 2019. Winners will be notified shortly thereafter.



For more information or to obtain an entry form, call Palatine Public Works at **847-705-5200** or visit [palatine.il.us](http://palatine.il.us) and search 'hometown pride awards'.

## THUNDERSTORM AND TORNADO SAFETY

Thunderstorms and tornados can develop quickly and occur with little to no warning. Heavy winds and lightning caused by storms can cause extended power outages, uprooted trees, landslides, and downed or broken utility lines. Additionally, heavy rains can cause flash floods.

Familiarize yourself with the following terms to stay alert and prepared during heavy storms:

- **Tornado Watch:** conditions that are favorable for the development of tornados.
- **Severe Thunderstorm Watch:** conditions are favorable for the development of severe thunderstorms containing large hail and/or damaging wind.
- **Severe Thunderstorm Warning:** large hail and/or damaging wind has been reported by spotters or is about to develop. Go to substantial shelter immediately.
- **Tornado Warning:** a tornado has been reported by spotters, or National Weather Service (NWS) meteorologists have determined that one is about to form in the next several minutes. Go to substantial shelter immediately.



### During the Storm

- Avoid contact with metal, electrical equipment, telephones, bathtubs, water faucets or sinks, because electric currents from lightning can travel through wires and pipes.
- If you are outside, take cover in a stable facility. Avoid taking shelter under trees.
- Tune in to local TV/radio channels for emergency advisories and instructions.
- Avoid walking through water that has seeped into your home; it may contain hazardous materials.
- If you are asked to evacuate your home, follow instructions given to you by emergency personnel.
- Call the Public Works Department at **847-705-5200** or Village Hall at **847-359-9050** to report fallen trees or tree limbs, clogged catch basins or flooded streets.
- Avoid downed power lines and broken gas lines. Report them by calling **9-1-1**.

### After the Storm

- Assess your immediate environment.
- Report fallen trees, flooded streets or damaged public utilities to the proper department.
- Stay tuned to local weather stations for updated information.



## NEW BUSINESSES

424/7 Collectibles  
473 W. Northwest Highway,  
Unit 2G  
847-222-3131  
Sports Memorabilia

Alys Glambar & Day Spa  
15 E. Northwest Highway,  
Suite A  
224-200-0260  
Spa & Makeup

American Pinball  
500 S. Hicks Road  
847-893-6800  
Amusement Game  
Manufacturing

Ayala's Solutions  
201 E. Dundee Road,  
Suite 1  
224-650-0421  
Marketing

Brush Salon  
109 W. Slade Street,  
Suite 1  
224-234-7088  
Salon

CFS of Palatine  
1707 N. Rand Road,  
Suite 100  
847-496-5961  
Secondary Finance

Community Cares  
1585 N. Rand Road  
847-776-9500  
Closet and Food Pantry

Crunch Palatine  
722 W. Euclid Avenue  
847-686-2750  
Fitness/Gym

Fast Laundry  
2365 N. Hicks Road  
847-469-9000  
Laundromat

Foot Massage Foot  
473 W. Northwest Highway, 1C  
312-206-5794  
Foot Massage

Great Degrees!  
453 S. Vermont Street,  
Unit F  
847-963-1583  
HVAC Contractor

H2O Waterfalls, Inc.  
655 S. Vermont Street  
847-956-0600  
Water Feature  
Manufacturing/Welding

*continued on page 13*

## CHANGES TO THE FOOD INSPECTION SCORING REQUIREMENTS

The Environmental Health Division is responsible for permitting and inspecting all food establishments, including restaurants and grocery stores in the Village of Palatine. As of January 2019, the Village adopted the amended Illinois Food Code, which now uses the FDA Food Code for food establishment inspections. FDA strives to promote the application of science-based food safety principles in retail and foodservice settings to minimize the incidence of foodborne illness.

Residents may have noticed inspection scores previously posted at the entrances of food establishments within the Village. Per the Illinois Department of Public Health, a scoring system shall no longer be used for food inspection reports. Therefore, food establishments will no longer be required to post their routine inspection scores for the public. Beginning July 1, 2019, the food establishment inspection reports will be made available on the Village of Palatine's website at **palatine.il.us**.

The Environmental Health Division will continue its commitment to protecting the public health and conducting inspections of food establishments to verify compliance with the Illinois Food Code. For questions, please contact the Environmental Health Division at **847-359-9042**.



## CHAMBER OF COMMERCE REMINDS RESIDENTS TO THINK/SHOP LOCAL

The Palatine Area Chamber of Commerce (PACC) exists to support the Palatine business community, in order to help it prosper through a variety of educational programs, events and other initiatives. PACC's 'Think Local' campaign impacts all Palatine businesses (chamber of commerce members or not) by generating awareness about the importance of patronizing local business, instead of purchasing items online or in other communities - whenever possible.

### EXPLORE PALATINE

Think Local first and see all  
the treasures Palatine has to offer.

*Visit [palatinechamber.com](http://palatinechamber.com) for more info.*

Sponsored by **PALATINE**  
Area Chamber of Commerce

Sales tax dollars generated from purchases at Palatine businesses have a direct impact on the local community; for every \$100 purchase, \$48 stays in Palatine when individuals shop at an independent, small business, \$14 when residents shop at larger/regional businesses - but just \$1 remains in Palatine when residents shop online.

As an outgrowth of this initiative to encourage residents to think and shop locally, the PACC will sponsor the 2nd annual 'Explore Palatine' event on Saturday, September 14, 2019; please stay tuned for more information in the coming months. This is a community-wide event that encourages residents to make a point of exploring and shopping at local businesses on this day, when special offers and events will be featured at participating businesses. Owners and representatives of Palatine businesses interested in getting involved should call the PACC at **847-359-7200** or visit **palatinechamber.com**.



## NWHP OFFERS SERVICES AND SUPPORT FOR SENIORS IN PALATINE

North West Housing Partnership (NWHP) provides two important programs for senior citizens who reside in Palatine and are living independently.

The first is the **Senior Handyman Program**, which provides seniors 60 years of age and older with handyman services, including (but not limited to) the installation of grab bars, sink repairs, fixing door locks, gutter cleaning, and more - all available on a sliding scale.

Fees are either \$10, \$20 or \$30 an hour, depending on income, and in some cases, services can be provided free of charge. Emergency repairs are not included in this program.



The **CAPABLE Program (Community Aging in Place, Advancing Better Living for Elders)** is the second program offered by NWHP, which has a goal to help seniors live independently in their homes, as long as possible. Seniors aged 65+ can qualify to

receive the services of an occupational therapist, a nurse, and a handyman, all of whom will visit the them over a four-month period to assist with any challenges and address any needed home repairs.

For more information on either of these programs, which are also offered to residents of Rolling Meadows, Arlington Heights, Mount Prospect and Buffalo Grove, please call **847-969-0561** or visit **nwhp.net**.

## FIRE DEPARTMENT LIFE JACKET LOANER PROGRAM



The Palatine Fire Department is proud to be a life jacket loaner site. The life jacket loaner program began in 1997 and was founded by the BoatU.S.® Foundation. Each Palatine Fire Station has an inventory of life jackets in infant, child and youth sizes for children up to 90 pounds. During 2018, the Palatine Fire Department loaned out 138 life jackets through this program.

According to the Centers for Disease Control (CDC) drowning is the leading cause of unintentional injury or deaths for children ages 1-4. Drowning is the second leading cause of unintentional injury deaths for children 1-14 years, and is the fifth leading cause of death for people of all ages. Eighty-percent of boating deaths were caused by drowning, and 83% of victims were not wearing life jackets, as reported by the U.S. Coast Guard. Illinois law requires anyone under the age of 13 must wear a life jacket while aboard any watercraft under 26 feet in length at all times the boat is underway, unless they are below deck in an enclosed cabin or operating on private property. State law also requires persons of any age to wear a personal flotation device while operating a personal watercraft. For more information about the Palatine Fire Department Life Jacket Loaner Program, please call **847-202-6340** or visit **palatine.il.us** and search 'life jacket loaner'.

## NEW BUSINESSES

*continued from page 12*

Illinois Spinal Care  
231 N. Northwest Highway  
847-999-0101  
Chiropractic Office

ID Cake Decorating Academy  
212 W. Northwest Highway  
224-200-3525  
School

Jeanne Clohisy Fine Art  
21 E. Northwest Highway, Suite 2B  
847-525-0941  
Art Studio/Classes for Adults

Joyful Nail and Spa  
136 W. Northwest Highway  
84-496-4173  
Nail Salon and Spa

Kiddie City Learning Center  
201 W. Dundee Road  
630-276-3701  
Day Care

The Law Offices of  
Anthony B. Gordon  
201 E. Dundee Road, Suite 1  
312-767-9500  
Law Office

Leanna Brows & Beauty LLC  
173 W. Northwest Highway  
312-623-1161  
Microblading Business

Lustr Auto Care  
257 N. Woodwork Lane  
773-715-4198  
Car Care Services

MP Consulting, LLC  
501 W. Colfax Street, Suite A  
224-656-4071  
Engineering Consulting

Oportun, Inc.  
1206 E. Dundee Road  
630-353-1180  
Financial Institution

Pete & Mac's Pet Resort Palatine  
211 E. Northwest Highway  
480-970-6166  
Boarding Facility

Royal Crab House Commercial  
787 E. Dundee Road  
847-485-8101  
Ning Li Restaurant

Samcycle Electric Bikes  
144 W. Northwest Highway  
224-836-1968  
Electric Bike Sales

*continued on page 14*

## NEW BUSINESSES

*continued from page 13*

Serenity Salon in Solstice  
55 S. Greeley Street  
847-922-4678  
Hair Salon

Skin Care by Camy  
8 N. Bothwell Street, #102  
708-528-6686  
Skincare

Sumer, Inc.  
1254 W. Northwest Highway  
847-991-8500  
Manufacturing

United Palatine Coalition  
201 E. Dundee Road, Suite 2  
847-800-3032  
Youth Services

Xado Auto Lube  
1402 N. Rand Road  
888-787-9236  
Express Oil Change

We Rock the Spectrum Chicago  
553 E. Dundee Road  
847-496-5674  
Sensory Kids Gym

## SHARING THE ROAD WITH MOTORCYCLISTS

Cars and motorcycles can coexist safely on roadways, but there are several precautions that both drivers and riders can, and should follow, in order to avoid accidents, injuries, and even fatalities.

### Drivers are advised to remember to:

- Double check blind spots
- Use caution when passing
- Keep a safe following distance
- Consider weather conditions
- Turn high beams down when any vehicle is oncoming
- Do not try and 'share' a lane with a motorcycle
- Initiate turn signals earlier than normal
- Pay attention at intersections
- Watch for motorcycles



**Share the road and stay safe out there!**

## ELECTRONICS RECYCLING AND DOCUMENT DESTRUCTION EVENT SATURDAY, JULY 20, 2019 9:00 A.M. – 12:00 P.M.

The Village of Palatine, Palatine Park District and Harper College are partnering with the Solid Waste Agency of Northern Cook County (SWANCC) to host an Electronics Recycling and Document Destruction Event on Saturday, July 20, 2019 from 9:00 a.m. until noon. The event will be located at Harper College, 1200 W. Algonquin Road in Palatine in the parking lot. All vehicles must only use the Euclid Avenue entrance and follow the signs provided. No vehicles will be allowed to enter the event line after noon. Participants must be in a vehicle to drop off materials; no walk-ups will be allowed for safety reasons.

Residents from Palatine and other SWANCC communities are eligible to participate. IDs will be checked for verification of residency in a SWANCC member community. Materials will not be accepted from non-SWANCC residents, as well as from businesses, schools or institutions.

**Paper:** Only sensitive documents will be accepted, which can include medical forms, bank statements, personal files and retired tax forms. There is a limit of six file boxes or paper bags per vehicle. Plastic and metal clips or binders must be removed. DO NOT bring paper in plastic bags, and DO NOT bring magazines, greeting cards or newspapers, as these items can be recycled during curbside recycling at Palatine residences.

**Electronics:** Bring only those electronics listed by SWANCC as acceptable; visit [swancc.org/programs/electronics-recycling](http://swancc.org/programs/electronics-recycling) for a complete list. Please remove electronics from plastic packaging and boxes prior to bringing them to the event.

Please do not bring household chemical waste, documents, batteries, light bulbs or other unacceptable materials. Do not drop off materials other than during the posted event date and times.

For more information on other SWANCC electronics one day drop-off events and permanent drop-off locations, visit [swancc.org](http://swancc.org) or call **847-724-9205**.





# HELP EMERGENCY RESPONDERS FIND YOUR HOME



Precious seconds could be lost during an emergency if first responders are unable to identify an address properly. Firefighters, paramedics and police officers depend on clearly marked address numbers at residences when responding to emergencies. Generally, house numbers should be at least 4 inches in height, located in a well-lit area, and be visible from the street. Residents are advised to use numbers that contrast with the color of the house so that they stand out from the street, and also avoid using fancy script numbers which are difficult for emergency responders to see. The house numbers should be placed near the main entrance of the home and not be obstructed by trees or shrubbery. If a home is located on a corner, residents may choose to use an address plaque that contains both the house number and street name.

**Remember, if Palatine first responders can't find you, they can't help you.**

## CRIME ALERT: DON'T BE A VICTIM OF RUSE BURGLARIES

Burglars will use many different ruses to enter a victim's home, or to lure a victim out of their home, such as: 1) needing to check the water heater/pipes/water quality, 2) debts owed to/from the homeowner, 3) trimming trees, 4) property line questions, 5) nurses taking blood pressure, and more. Burglars will scam unsuspecting victims into letting them in the house or may push their way into a house. These individuals like to keep victims distracted and confined to one room, usually the kitchen, while others secretly enter the house and burglarize it. Many times, the house is left as it was prior to the burglary (for example, no drawers left open, no messes) so it may take days for the victim to even realize that their personal items are missing.

### Stay Aware:

- If someone you don't recognize is entering your house or a neighbor's house, or you see unfamiliar vehicles in your neighborhood, call **9-1-1**.
- Keep all doors securely locked at all times – even if gardening outside.
- If someone approaches a home asking for help or to use the phone, do not let them inside. Tell them you will call **9-1-1** for them – if someone really needs help, they will appreciate the call to the police.
- If a stranger comes to the house posing as a nurse, nurse's aide, or another health professional, do not give them personal information or let them take blood pressure unless it was pre-arranged with a doctor.
- Do not keep large amounts of cash, jewelry, or important personal documents in the house. A bank or safety deposit box is a safer place to keep these items.



### Home Improvement Burglaries:

- Residents always have the right to demand identification from someone who comes to the door. If an appointment was not made, DO NOT allow individuals in the house, and call **9-1-1**.
- Do not let anyone inside who offers to do work at the home that was not scheduled (tree trimming, driveway blacktopping, chimney repair, etc.).
- Invite a relative or neighbor over while service people are in the house.

The Palatine Police Department strongly urges residents to call **9-1-1** for any suspicious activity and to obtain help in identifying individuals at your door.

Please contact the Crime Prevention Unit at **847-359-9061** with any questions.

# PALATINE VILLAGE HALL WILL BE CLOSED

**Monday, May 27**

In Observance of Memorial Day

**Thursday, July 4 and Friday, July 5**

In Observance of the Fourth of July Holiday

Village of Palatine  
200 E. Wood St.  
Palatine, IL 60067

PRSR STD  
U.S. Postage  
PAID  
Palatine, IL  
Permit No. 2855

\*\*\*ECRWSS\*\*\*

POSTAL CUSTOMER

PALATINE, IL

## IT'S TIME TO RECYCLE RIGHT

Knowing what materials are acceptable (and unacceptable) for curbside recycling, and how they must be prepared to be recycled, has become increasingly important – not only for the community, but also for the health of the planet.

**If a package states that it is recyclable, why can't I put it in my cart?** Just because packaging claims an item is recyclable, it does not mean that it can be placed in the curbside recycling cart. What it means is the product or packaging is technically able to be recycled, but the key is whether there is a market for that material, which dictates the community's recycling program.

**How should recyclables that are appropriate for the recycling bin be prepared?**

1. Empty and rinse every container to remove food or beverage residue.
2. Put plastic lids back on their original containers and put steel lids in the recycling cart.
3. Flatten large boxes to make room in the cart/bin for more materials.
4. Remove inside wax liners of paperboard boxes, such as cereal boxes, and throw them away.
5. Place only approved items in the cart. Please see the graphic to the right for acceptable and unacceptable items for recycling.
6. Labels no longer have to be removed from containers.

For questions regarding curbside recycling, contact the Environmental Health Division by phone at **847-359-9042** or visit **palatine.il.us** and search 'recycling'.



### Curbside Recycling Guidelines

**Materials go in cart LOOSE!  
Empty & Clean!**



**Plastic**  
Bottles - Caps On Preferred,  
Tubs, Jugs, Jars  
**No Bags or Film**  
**No Foam**

**Glass**  
Bottles & Jars

**Metal**  
Steel & Aluminum

**Mixed Paper & Cartons**  
Flatten Boxes

Verify details with your community's recycler!

### Do Not Put in Recycling Carts!



**No Electronics  
or Sharps**



**No Plastic  
Bags or Wrap**



**No Food, Liquids,  
Diapers, or  
Shredded Paper**



**No Clothing  
or Shoes**



**No Hoses, Wires,  
or Hangers**

Visit [swancc.org](http://swancc.org) or check IEPA's interactive site at [bit.ly/recycleil](http://bit.ly/recycleil).

swancc.org