

VILLAGE of PALATINE

PALATINE FIRE DEPARTMENT OPEN HOUSE, OCTOBER 5



Have you ever wondered what a fire engine looks like up close, how to use a firehose, or what a fire station looks like? Now is your chance! Mark your calendar for the annual Palatine Fire Department Open House on Saturday, October 5, 2024, from 10:30 a.m. to 1 p.m. at Fire Station 84 located at 220 W. Illinois Ave.

Families are invited to watch demonstrations from the Fire Department, spray a firehose, see fire equipment up close, take pictures next to a fire engine, and watch how sprinklers can reduce the loss of life and property in a fire.

The Annual Fire Department Open House is an event the entire community can enjoy while learning valuable fire safety tips.

The Palatine Fire Department looks forward to seeing you there!



IN *this* ISSUE

Scarecrows on Parade	2
Battery Awareness	3
Leaf Collection	4-5
Hometown Pride Winners	6
Fertilizers & Pesticides	7
Flood Maps & Zones.....	8
Early Voting	9
Trick or Treat Hours.....	10
Clothes Dryer Safety	11
Grease Fires	12
Village Blood Drive	13
E-Bike & E-Scooter Safety	14
Back to School Safety	15

NEW CHANGES TO LEAF COLLECTION

Since 1987, the Village has conducted a curbside leaf collection program. Over the years, adjustments have been made to incorporate resident feedback and improve operational efficiency.

Recently, a comprehensive review was made to evaluate the program for further improvement and several changes, approved by the Village Council, have been implemented for this year's program which will streamline the process. These changes include:

- **Moving the start date back one week.** Residents in certain zones had asked for the program to start later than mid-October as most trees do not start dropping many of their leaves yet.
- **Combining the first two weeks of scheduled days into a one week all zone pickup.** To accommodate the new later start and since the volume of dropped leaves is lighter in October, the first two weeks will be combined and all zones will be picked up in one week, just like the all zone final pickup prior to Thanksgiving.
- **Removing specific days of the week to set out leaves.** To eliminate confusion about what day of the week to set out leaves, now everyone will set their leaves out on scheduled Mondays by 7 a.m., making it easier to remember.
- **Faster collection and improved flood protection.** Crews can move efficiently from one zone to the next and complete multiple zones in one day, instead of delaying pickup in the following zone to adhere to the schedule. Since most residents rake on weekends, this means leaves will be collected sooner and have a smaller chance of being blown away by wind or carried by rain into storm sewers.

(For more details see pages 4 & 5)

VILLAGE OF PALATINE

200 East Wood Street
Palatine, IL 60067
www.palatine.il.us
village@palatine.il.us

VILLAGE HALL HOURS

8 am to 4 pm
Monday through Friday

VILLAGE PHONE NUMBERS

Emergency.....911
Village Hall.....358-7500
TDD (Emergency)..... 911
Village Action Line 705-5200
Community Services.....359-9042
Fire (Non-Emergency)....202-6340
Police (Non-Emergency)..359-9000
Public Works..... 705-5200

Mayor

Jim Schwantz.....359-9007
jschwantz@palatine.il.us

Village Clerk

Margaret R. Duer.....359-9051
mduer@palatine.il.us

District 1

Tim Millar.....894-0001
tmillar@palatine.il.us

District 2

Scott Lamerand.....894-0002
slamerand@palatine.il.us

District 3

Doug Myslinski.....894-0003
dmyslinski@palatine.il.us

District 4

Greg Solberg.....894-0004
gsolberg@palatine.il.us

District 5

Kollin Kozlowski.....894-0005
kkozlowski@palatine.il.us

District 6

Brad Helms894-0006
bhelms@palatine.il.us

Village Manager

Reid Ottesen.....359-9050
rottesen@palatine.il.us

All phone numbers are (847) area
code unless otherwise noted.

SCARECROWS ON PARADE

The 17th annual Scarecrows on Parade decorating contest, hosted by the Palatine Beautification Commission and sponsored by The Home Depot, will be held on Saturday, September 21, 2024, as part of the Rotary Club's Oktoberfest! Any Palatine family, business, non-profit organization, school affiliate, sports affiliate, homeowners' association, faith or civic group are invited to participate in this event.

There are two judging categories with prizes awarded in each category. The **Youth** Category is for kids and youth groups with members 17 years old and younger. The **Adult** Category is for adults and adult organizations with members 18 years and older.

Decorated scarecrows must be dropped off on Saturday, September 21, at the Firefighters' Memorial, located at the corner of Brockway and Slade Streets. The award ceremony will be held around 12:30 p.m. in the Oktoberfest tent. All of the participating scarecrows will remain on display along the rail walk through early October for residents and visitors to enjoy.

Call the Public Works Department at (847) 705-5200 for more information.



IMPORTANT INFORMATION FROM SWANCC

Waste Reduction Presentations for Schools or Groups

Did you know that SWANCC provides presentations and programs for schools and community groups of varying sizes and ages, from kindergarten through senior citizens?

School programs are built around our signature "Taking Care of Our Earth" program differentiated by grade level and a lead-in to specialty programs on soil, water, resources, and waste audits. Adult programs include topics such as waste reduction, recycling correctly, and composting at home. Every program is tailored to specific group interests, size, age, and setting - and offered FREE across SWANCC member communities!

For more information or to request a presentation, contact SWANCC's Education Coordinator, Theresa Greinig, at **theresa@swancc.org** or (847) 243-4706, or check out program information available on SWANCC's **website**.

Illinois Battery Awareness

Batteries power our lives and are found in every electronic device imaginable. Although batteries are incredibly useful and convenient sources of power, they can pose dangerous challenges.

NEVER place batteries in your recycling cart, and many types of batteries should not go in your garbage either - they can cause fires and threaten the lives of workers and the public. Batteries should be taken to a special collection program or drop-off.

Visit SWANCC's **website** for options, go to **illinoispsc.org/batteries/** to learn more, and follow Illinois Battery Awareness on **Facebook** or **Instagram**!



POLICE K9 JAX AND OFFICER ALEX WAGNER WIN AT K9 OLYMPICS



In mid-August, the Village of Palatine had reason to celebrate as Officer Alec Wagner and his partner, K9 Jax, showcased their exceptional skills at the 25th Annual K9 Olympics. Held at Vohne Liche Kennels in Denver, Indiana, this prestigious event brought together top K9 law enforcement and military teams from across the nation to compete in a series of challenging narcotics and patrol events.

We are thrilled to announce that Officer Wagner and K9 Jax made us proud by securing 1st place in the obedience category and 2nd place in the narcotics scramble. Their outstanding performance highlights not only their dedication and hard work but also the exceptional training and bond they share.

Congratulations to Officer Wagner and K9 Jax for representing the Village of Palatine with such distinction. Their success at the K9 Olympics is a testament to their commitment to excellence and their invaluable contribution to our community. Well done!

CURBSIDE LEAF COLLECTION BEGINS OCTOBER 28, 2024

There will be three leaf collections for each Palatine single-family residence between the week of Monday, October 28, and the week of Monday, November 18.

The week of October 28 will be the first collection. All zones must have their leaves out on the street by 7 a.m. on Monday, October 28. Crews will start the first pickup on Monday and continue throughout the week until all the leaves have been collected.

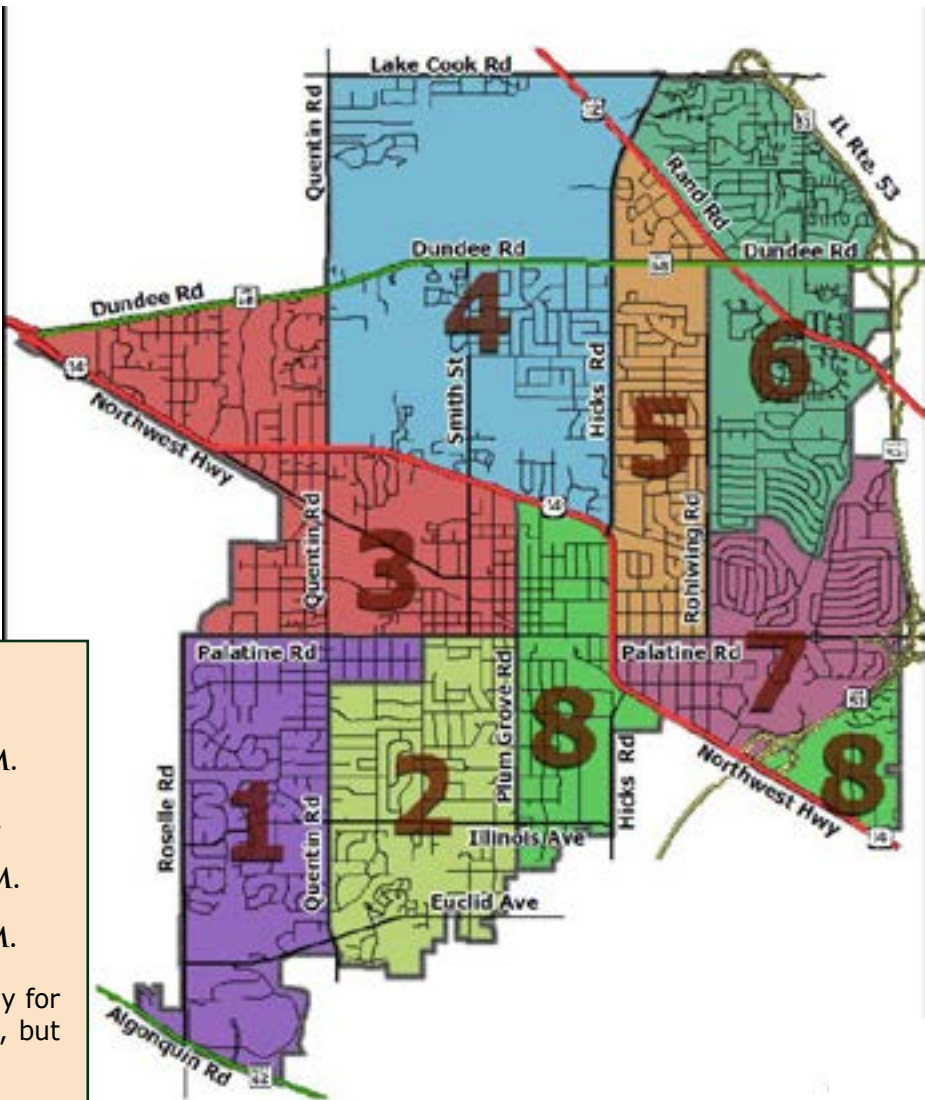
Over the following two weeks, one half of the Village will be collected the first week and the other half the second week. Zones 1 through 4 will be picked up the week of November 4. All residents within zones 1 through 4 must have their leaves placed in the street by 7 a.m. on Monday, November 4. Crews will start the pickup on Monday and continue until all the leaves have been collected within those zones. Collection is anticipated to be complete by Thursday, November 7, but may finish sooner depending on the volume of leaves.

Zones 5 through 8 will be picked up the week of November 11. All residents within zones 5 through 8 must put their leaves in the street by 7 a.m. on Monday, November 11. Again, crews will start the pickup on Monday and continue until all the leaves in those zones have been collected. Collection is anticipated to be complete by Thursday, November 14, but may finish sooner depending on the volume of leaves.

The week of November 18 will be the final leaf pickup opportunity for all Village single-family residences. All zones must have the final collection of leaves out on the street by 7 a.m. on Monday, November 18. Crews will start the final pickup on that day and continue throughout the week until all the leaves have been collected.

There will be only one pass down each street during collection days; the large volume of leaves does not allow for trucks to return a second time. Leaf collection is a two-step process. Crews collect leaves with a push basket, then the sweeper does a final cleanup of leaf debris. Street cleanup is longer than leaf pickup due to the slower pace of the sweeper machine.

Please refer to the map and schedule to determine your zone and pickup dates or visit our **website** to use our interactive map.



Zone	Date/Time
ALL ZONES	MON., OCT. 28, 7 A.M.
1 - 4	MON., NOV. 4, 7 A.M.
5 - 8	MON., NOV. 11, 7 A.M.
ALL ZONES	MON., NOV. 18, 7 A.M.
All raked leaves must be in the street and ready for pick up no later 7 a.m. on scheduled Mondays, but no earlier than 4 p.m. on the day prior.	

- Important Reminders** *(leaf collection continued)*
- Avoid parking over a pile of leaves because a warm car can ignite leaves underneath it and create a fire hazard.
 - Do not park on the street during pickup days because vehicles block the curb for leaf collection equipment.
 - Do not rake leaves around the edges of cul-de-sac islands because the equipment cannot make small enough turns around the islands. Rake them to the residential curbside.
 - Clean leaves from neighborhood storm sewer inlets to help prevent flooding during rain. Rake leaves into the street about 12 inches from the curb to allow for drainage.
 - Rake leaves into the street on the pavement. **Leaves raked just over the curb or on the parkway cannot be picked up.** Streets without curbs should have leaves piled as close to the shoulder of the road as possible, without hindering vehicular traffic.
 - Place leaf piles away from trash and recycle bins where possible.
 - Do not include non-leaf material (grass clippings, branches, dirt, etc.) because they can damage equipment and cause safety issues. **Piles with any debris besides leaves will be left at the curb.**
 - **Notify your landscapers of the new collection schedule.** They must follow the same guidelines and may not place leaves in the street any earlier than 4 p.m. on the day prior to collection. Property owners are responsible for the actions of their contractors and may be subject to a fine. If your landscaper is coming earlier than the day before your pickup, ask them to either haul the leaves away or place the leaves in the parkway and then you can put them in the street prior to 7 a.m. on collection day.

Timing is Everything

Do not rake leaves into the street too early. Piles left accumulating for several days before the scheduled pickup can be carried away by wind or rain, and block storm sewer inlets which could cause flooding in yards or basements.

Can You Schedule Later Pickups?

Timing of the Village leaf collection schedule is driven by when the equipment needs to be prepared for snow removal efforts. All trucks and end loaders that collect leaves are part of the front-line snow removal equipment fleet. It is a lengthy process to prepare the trucks, which includes installing the nose plow equipment, inspecting and modifying the underbelly plows under the trucks (which stay on year-round), and installing and calibrating the liquid calcium tanks and salt spreaders. The entire conversion takes as long as two weeks as there are more than 20 pieces of equipment to transition. Therefore, leaf pickups cannot be made any later than the current schedule. Crews begin converting the equipment during the week of Thanksgiving, after the final collection week of November 18. The Village will monitor the weather and announce if conditions allow for an additional all zone sweep.

In Case of Snow or Ice

An early snowfall seriously hampers leaf collection efforts. Leaves raked to the curb will most likely be plowed back onto the parkway. Public Works will make every attempt to collect leaves raked back into the street.

Bag Leaves for Pickup Option

Residents have the option to collect fallen leaves in yard waste bags and place them on the curbside for weekly household refuse pickup. This flexible option works well for those who do not want to commit to the scheduled leaf collection program. Final scheduled pickup for curbside bagged yard waste and bundled brush will occur the week of December 9, 2024.

For more information, visit our **website** or call the Public Works Department at 847-705-5200.

2024 HOMETOWN PRIDE AWARD WINNERS

The Village of Palatine Beautification Commission recognized homes, businesses, subdivisions, and 'Doors' of Palatine with the 2024 Hometown Pride Awards. Entries were submitted by residents and business owners. Judging is based on overall curb appeal, design and maintenance. This year's winners are:

1ST PLACE WINNERS



SINGLE-FAMILY



MULTI-FAMILY



CUL-DE-SAC/SUBDIVISION



DOORS OF PALATINE



BUSINESS

2ND PLACE WINNERS



SINGLE-FAMILY



MULTI-FAMILY



DOORS OF PALATINE



BUSINESS

3RD PLACE WINNERS



SINGLE-FAMILY



MULTI-FAMILY



DOORS OF PALATINE



BUSINESS

SINGLE-FAMILY

1st Place: 234 N. Plum Grove Road
2nd Place: 1149 N. Del Mar Drive
3rd Place: 1106 N. Pepper Tree Drive

CUL-DE-SAC/SUBDIVISION

1st Place: Bridge View West HOA

BUSINESS

1st Place: Second City Canine Rescue
2nd Place: Sikh Religious Society
3rd Place: Palatine Park District

MULTI-FAMILY

1st Place: 1273 N. Inverrary Lane
2nd Place: 36 W. Fern Court
3rd Place: 124 W. Colfax Street

DOORS OF PALATINE

1st Place: 607 N. Clark Drive
2nd Place: 36 W. Fern Court
3rd Place: 1147 N. Knollwood Drive

2024 -2025 HOLIDAY WASTE COLLECTION SCHEDULE

Mark your calendar for the below holidays that will affect your solid waste collection. Save and post this handy schedule for reference throughout the year and save yourself from hauling the trash to the curb a day early or missing your collection entirely.

Week of	Holiday	Collection
December 23, 2024	Christmas Day	Wednesday collection one day later
December 30, 2024	New Year's Day	Wednesday collection one day later
May 26, 2025	Memorial Day	All collection one day later
September 1, 2025	Labor Day	All collection one day later



Curbside collection of bagged and bundled yard waste ends the week of December 9, 2024 and resumes the week of March 31, 2025.

For more information, contact the Environmental Health Division at 847-359-9042.

PROTECTING OUR WATER FROM URBAN FERTILIZERS AND PESTICIDES

Urban areas are increasingly contributing to water pollution through the use of fertilizers and pesticides. As these chemicals are applied to lawns, gardens, and landscapes, they can easily be washed into nearby water bodies by rain or irrigation. Once in the water system, these pollutants can cause serious environmental damage, affecting aquatic ecosystems, drinking water supplies, and public health. Protecting our water requires a concerted effort to manage and reduce the use of these chemicals while promoting sustainable practices.



1. Opt for Organic or Slow-Release Fertilizers

One effective way to reduce the impact of fertilizers on water is by using organic or slow-release options. Organic fertilizers, made from natural materials, break down slowly and are less likely to leach into water systems. Slow-release fertilizers provide nutrients over time, reducing the risk of runoff and ensuring plants absorb them more effectively.

2. Implement Integrated Pest Management (IPM)

Integrated Pest Management (IPM) is a holistic approach that minimizes the need for chemical pesticides. It involves monitoring pest populations, using natural predators, and employing physical controls like traps and barriers. By reducing reliance on chemical treatments, IPM helps protect water quality while maintaining healthy landscapes.

3. Proper Application Techniques

Applying fertilizers and pesticides correctly is crucial. Avoid over-application and ensure that chemicals are not spread on hard surfaces like sidewalks and driveways, where they can easily be washed into storm drains. Timing is also important; applying these substances during dry periods can reduce the likelihood of them being washed away by rain.

4. Rain Gardens and Buffer Zones

Creating rain gardens and buffer zones with native plants can help absorb runoff before it reaches water bodies. These gardens are designed to capture and filter rainwater, reducing the flow of pollutants into streams, rivers, and lakes. Buffer zones along waterways can also trap and break down chemicals before they enter the water. For information about the Village's Rain Garden Reimbursement Program, visit our **website**.

By adopting these strategies, individuals and communities can play a vital role in protecting our water resources from the harmful effects of urban fertilizers and pesticides, ensuring cleaner, healthier water for all.

For more information, visit the EPA's **website**. To report possible illegal discharges to the storm drain system, call the Public Works Department at (847) 705-5200.

NEW BUSINESSES

Beauty Nation LLC

2001 N. Rand Road K
630-921-9417
Beauty Supplies

Chicago Ramen

3 E. Northwest Highway
224-801-8130
Restaurant

Chicago Vending Solutions

975 W. Algonquin Road
773-562-0766
Self Serve Mini Market

Chris Bryan State Farm

17 W. Railroad Avenue
630-980-9510
Insurance Agent

First Team Exteriors

1244 W. Northwest Highway
773-801-6651
Windows, Gutters & Siding

Heidi R. Yeung Counseling PLLC

119 E. Palatine Road #207
708-584-3-90
Mental Health Counseling

Two-Libras LLC

10 N. Bothwell Street
815-333-9900
Coffee/Bakery Shop

Lina's Hair Salon

220 N. Smith Street, #117Q
847-871-3615
Cosmetic Hair Services

Little Broken Things

48 W. Palatine Road
847-654-7099
Hair Salon/Art Gallery

Mermaid Spa & Massage Therapy

90 W. Northwest Highway
312-593-0163
Massage Therapy

FLOOD MAPS AND ZONES



Flood maps are not permanent; they can be revised to reflect changing flood risks. Between a map change and moving into a new home, you might end up in a new flood zone without any clue as to what that means. When you have questions, ask your agent for help.

Anywhere and everywhere rain falls, floods can follow.

Flood Zones

The highest risk flood zones are also known as Special Flood Hazard Areas (SFHA). They are areas having special flood, mudflow or flood-related erosion hazards. SFHAs will be inundated by a flood event that has a 1% chance of being equaled or exceeded in any given year. A 1% annual chance flood is also referred to as the base flood or 100-year flood.

Flood zones are given alphanumeric designations, such as zone A, B or C. The areas which have the highest risk of flooding are largely zones that have the letter A or V in their name, such as zone A, zone AR/AE, zone VE or zone V30. Areas that have a moderate flood risk are labeled zone B or X (but only zone X on maps that are shaded). Finally, areas with the least risk of flooding are areas outside the SFHA. They're zone C or X (but only zone x on maps in areas that are not shaded).

Flood Maps

When flood maps are updated, your agent can play a key role in helping you understand your new flood risk. Depending on how the map changes, it could reflect your risk going up or down. Unfortunately, changing flood zones can be confusing, so rely on your agent to explain.

If you are moving into a high-risk area, it becomes critical that you understand the importance of flood insurance. Flooding is one of the most common and costly natural disasters, and flood insurance can help you protect the life you've built.

Under the NFIP's pricing approach, FEMA addresses flood risk variables such as the frequency of flooding, the various different kinds of floods, as well as distance to a water source and building characteristics (such as foundation type, basement type, elevation and more). So, while flood map data is necessary and essential for communities, they are no longer the most significant factor in rating premiums.

To learn more about flood maps and flood zones, visit FEMA's National Flood Insurance Program **website**.

EARLY VOTING FOR PRESIDENTIAL ELECTION

Early Voting for the upcoming Presidential Election will take place October 21st through November 4th, including weekends, at 150 W. Wilson Street during the following hours:

HOURS:

Monday through Saturday: 9 a.m. to 5 p.m.
Sunday: 10 a.m. to 4 p.m.

VOTER REGISTRATION:

Non-registered voters can register to vote and cast their ballot at all early voting sites. Two forms of identification must be presented with one ID showing the voter's current address.

ELECTION DAY VOTING:

Polls are open on Election Day from 6 a.m. to 7 p.m. at your home precinct (polling place). Non-registered voters can register to vote at their home precinct (**polling place**). Two forms of identification must be presented with one ID showing the voter's current address.

Please visit the Cook County Clerk website or call the Village Clerk's office with any questions at (847)359-9050.

Village Hall is not a polling place. FIND YOUR POLLING PLACE HERE.



NEW BUSINESSES

continued from P. 10

Mobil Gas Station - GT Energy

800 S. Plum Grove Road
847-934-6063
Gas Station/Convenience Store

No Manches Mexican Grill

1639 N. Baldwin Road
847-202-1431
Restaurant

Pali Pali Pizza & Korean Fried Chicken

100 W. Northwest Highway
224-539-8192
Restaurant

Patrick Finn LTD

1212 W. Northwest Highway
847-358-4133
General Contractor - Residential

Royal Spa

818 W. Northwest Highway
847-383-0030
Day Spa

Strickland Brothers Oil Change

224 N. Northwest Highway
336-828-0017
10 Minute Oil Change/Lube Services

Ta2hooligan LLC

574 W. Colfax Street
224-465-4293
Tattoo Shop

Tifeo Home Healthcare Services

117 E. Palatine Road, #103
224-488-4336
Home Healthcare Services

Vences Counseling PLLC

119 E. Palatine Road, #207
847-450-6190
Therapy/Mental Health Services

Village Inn

270 E. Northwest Highway
847-358-9050
Restaurant

POLICE SECURE FUNDING FOR ELECTRIC MOTORCYCLE

We are honored to announce a significant advancement for the Palatine Police Department! Thanks to the support of Congressman Raja Krishnamoorthi (IL-08), we've secured federal funding for an additional electric motorcycle in our fleet. This groundbreaking initiative not only enhances our patrol capabilities but also underscores our commitment to innovation and community partnership.



Back in 2022, we proudly became the first law enforcement agency in Illinois to embrace the Zero DSRP Electric Motorcycle. Its agility and versatility have empowered our officers to engage more effectively with the community and improve patrol efficiency. Whether it's participating in parades or ensuring public safety at events, this eco-friendly vehicle has allowed us to serve Palatine with pride and distinction.

The electric motorcycle's quiet operation ensures a discreet presence in sensitive locations like schools, while its emission-free design facilitates swift emergency responses in indoor settings. Beyond its logistical benefits, the unique presence of the electric motorcycle sparks curiosity and fosters stronger connections between officers and residents, promoting open dialogue and trust.

This initiative reflects our department's proactive approach to policing and our commitment to sustainability. A special thank you to Congressman Krishnamoorthi for championing this milestone in our journey towards safer and more connected communities.

We look forward to the positive impact this new addition will bring to our service and our ongoing efforts to innovate for a better future.



Doing laundry is most likely part of your every day routine. But did you know how important taking care of your clothes dryer is to the safety of your home? With a few simple safety tips you can help prevent a clothes dryer fire.

- Have your dryer installed and serviced by a professional.
- Do not use the dryer without a lint filter.
- Make sure you clean the lint filter before or after each load of laundry. Remove lint that has collected around the drum.
- Rigid or flexible metal venting material should be used to sustain proper air flow and drying time.
- Make sure the air exhaust vent pipe is not restricted and the outdoor vent flap will open when the dryer is operating. Once a year, or more often if you notice that it is taking longer than normal for your clothes to dry, clean lint out of the vent pipe or have a dryer lint removal service do it for you.
- Keep dryers in good working order. Gas dryers should be inspected by a qualified professional to make sure that the gas line and connection are intact and free of leaks.
- Make sure the right plug and outlet are used and that the machine is connected properly.
- Follow the manufacturer's operating instructions and don't overload your dryer.
- Turn the dryer off if you leave home or when you go to bed.

AND DON'T FORGET...

Dryers should be properly **grounded**. Check the **outdoor vent** flap to make sure it is not covered by snow. Keep the area around your dryer **clear** of things that can burn, like boxes, cleaning supplies and clothing, etc. Clothes that have come in contact with **flammable substances**, like gasoline, paint thinner, or similar solvents should be laid outside to dry, then can be washed and dried as usual.

FACT

❗ The leading cause of home clothes dryer fires is failure to clean them.



NATIONAL FIRE PROTECTION ASSOCIATION
The leading information and knowledge resource on fire, electrical and related hazards

nfpa.org/education ©NFPA 2018

PUT A LID ON GREASE FIRES

According to the National Fire Protection Association (NFPA), cooking is the leading cause of home fires and fire-related injuries. Cooking fires result in more than \$1.7 billion in property damage each year. Kitchen safety is crucial when cooking, especially when it comes to handling grease fires, as knowing the proper steps can prevent injuries.

Cooking oils and fats are the most common types of grease used in cooking. Unlike water, these oils and fats do not boil; instead, they begin to smoke before eventually catching fire. Importantly, cooking oils and fats do not mix with water. If water is added to a grease fire, it causes a violent reaction that can propel the burning grease out of the pot or pan, spreading the fire.

To prevent the fire from spreading and to avoid injuries, it's essential to know how to properly extinguish a grease fire. Understanding the Do's and Don'ts of handling a grease fire is key to staying safe in the kitchen.



Do's and Don'ts of a Grease Fire:

Do turn off the stove	Don't use water or a wet towel
Do use a cooking mitt to prevent injury	Don't use flour, baking powder, or sugar as these can catch on fire.
Do slide a metal lid or cookie sheet over the pot or pan to smother the fire. A tight metal lid is the best option. Avoid using a glass top as it may shatter.	Don't try to remove the pan from the stove or place it in the sink, the oil may spill potentially causing a burn or spreading the fire
Do use baking soda if a lid is unavailable, sprinkle the baking soda on top of the grease.	Don't move the pan into the sink even if you think the fire is out. The oil is still hot and will react with water.
Do use a class B or K extinguisher	Don't remove the lid until the pan is cool enough to touch
Do call the fire department. If the fire is too big, you can't put it out, or you are unsure what to do, exit the building. Notify everyone inside and close the door when you exit.	

Visit the National Fire Protection Association (NFPA) **website** for more cooking safety tips.

BLOOD DRIVE



Palatine Community Blood Drive

Thursday, Oct. 24
12 - 6 p.m.

Palatine Village Hall
Room Community B
200 E. Wood St., Palatine



To schedule an appointment call Vitalant at 877.258.4825 or visit vitalant.org and use group code: **ORD0A103**

Appointments recommended. Walk ins welcome.
Prepare: Eat Well, Hydrate, and Bring ID.

For more information or to schedule a donation, call 877.258.4825 or visit us at vitalant.org
Find us @vitalant:   

**GIVE A PINT
GET A PINT**



All donors who come to give blood, platelets or plasma Oct. 6-31 will be automatically entered for a chance to win one of three \$5,000 gift cards.* Presenting donors will receive a coupon for a pint of frozen custard from Culver's.

vitalant. 

E-Bike and E-Scooter Safety

The popularity of electric bikes and electric scooters (e-bikes and e-scooters) has taken off over the past few years. Lithium-ion batteries are usually the source of power for both, and if not used correctly, or if damaged, those batteries can catch on fire or explode. Whether you use e bikes or e scooters as your main way of getting around, or just for fun, there are important safety tips to keep in mind when charging or storing these devices.

The Problem

- Damaged or defective batteries can over-heat, catch fire, or explode.
- Lithium-ion battery fires give off toxic gases and they burn extremely hot.

Safety Tips

- Only purchase and use devices, batteries, and charging equipment that are listed by a nationally recognized testing lab and labeled accordingly.
- Always follow the instructions from the manufacturer.
- Only use the battery and the charger that were designed for, and came with, the device.
- Do not keep charging the device or device battery after it is fully charged.
- Only charge one device or device battery at a time to prevent overloading the circuit.
- Keep batteries at room temperature when possible. Do not charge them at temperatures below 32°F (0°C) or above 105°F (40°C).
- Do not store batteries in direct sunlight or inside hot vehicles, and keep them away from children and liquids.

- Store e-bikes, e-scooters, and batteries away from exit doors and anything that can get hot or catch fire.
- Only have device repairs performed by a qualified professional.
- Do not put lithium-ion batteries in the trash. Recycling is always the best option. Take the batteries to a battery recycling location or contact your local waste department for disposal instructions.

Signs of a Problem

Stop using the e-bike or e-scooter if you notice any of these problems with the battery: unusual odor, change in color, too much heat, change in shape, leaking, smoking, or not keeping a charge.



If you see a fire ...

- ❗ Leave the building immediately.
- ❗ Don't try to fight the fire.
- ❗ Call 911.

LEARN MORE

Visit nfpa.org/ebikes



NATIONAL FIRE PROTECTION ASSOCIATION
The leading information and knowledge resource on fire, electrical and related hazards

PALATINE POLICE REMIND MOTORISTS TO STAY ALERT AS CHILDREN HEAD BACK TO SCHOOL

Traffic Safety

Back-to-School season means an increase in pedestrians and bicyclists in traffic during morning and afternoon commutes.

Not only are children walking to school and bus stops, they are also riding bicycles and crossing the street.

The Palatine Police are reminding the public about the importance of focusing on roadway safety as children across the state prepare to head back to school, especially laws specific to the safety of children in school zones and while boarding buses.

Drivers approaching a stopped school bus with lights activated and sign extended must stop their vehicle before reaching the school bus.

A first-time violation for failing to stop for a school bus while their lights are activated and stop arm extended can result in a mandatory \$300 fine and a three-month suspension of driving privileges.

Curfew Violations

Now that many children are back in school, it is important that students are home by curfew time so they are able to focus on their studies and extracurricular activities. Summer break can be filled with fun-filled late nights, but many students forget about their responsibility to be home by 11 PM Sunday through Thursday and by midnight on Friday and Saturday. Palatine Police Department officers are often tasked with enforcing curfew violations to prevent potential criminal activity, to ensure that students are ready for school, and to avoid any unsafe situations. While the curfew ordinance is enforced year-round, it's especially important during the school year. If it's a school night - get home by 11 PM, but ideally earlier!

See Something, Say Something

It is critical to report suspicious activity to law enforcement immediately. Palatine Police Department officers are available 24/7/365 to respond to and investigate suspicious activities. With the beginning of the school year, all families should be having discussions about being alert and reporting concerning activity. Whether a student overhears a threatening statement or is concerned that a classmate may harm themselves, it's important to report these concerns to a trusted adult immediately. Other examples of suspicious activity include unfamiliar individuals loitering in unusual areas, the sound of glass breaking in the middle of the night, or someone looking into cars or windows. Our police officers are available to investigate these concerns. Please call 9-1-1 to report suspicious or threatening activity immediately.

Tech Safety

Adults and children alike are confronted by a variety of challenges when we interact with social media and technology in general. Adults should be warned to exercise caution when interacting with suspicious e-mails. Signs of a potentially suspicious e-mail include spelling/grammar mistakes, pressure to send money within a certain time frame, and requests to use links and attachments within the e-mail. Children are especially encouraged to use caution and parents should have frequent conversations with their children regarding the use of social media. It is important to remember that someone we are chatting with online may not be who they say they are and may not have good intentions. When in doubt it is very important to talk to a trusted adult about any suspicious or threatening online activity.



Fire moves fast. Plan ahead to save lives.

You may only have three minutes or less to escape once a fire starts in your home. Take these steps to increase your chances of survival.



Install Working Smoke Alarms

Smoke alarms give you and your loved ones the earliest warning possible that there is a fire, so you can get out of your home quickly and safely. Install smoke alarms in every sleeping room, outside each separate sleeping area, and on every level of the home. Check your smoke alarms twice a year and replace them once they stop working according to the manufacturer's recommendations. When replacing or buying new smoke alarms, look for products that are third-party listed or certified.



Close Before You Doze®

A closed door can be an effective barrier against deadly levels of carbon monoxide, smoke, and flames, and may give you more time to respond to the smoke alarm. In fact, there can be a 900-degree temperature difference between a room with an open door and one with a closed door. While a room with an open door may reach 1,000 degrees Fahrenheit a room with a closed door may only reach 100 degrees Fahrenheit. Make closing doors at night part of your bedtime routine.



Create and Practice a Fire Escape Plan

If there is a fire in your home, there won't be time to plan a way out in the moment. Create an escape plan for your home and practice it with your family so you're ready for a fire emergency. Don't wait, plan ahead. Make sure your Fire Escape Plan includes a Plan A, B, and C!

Know at least two ways out.

Plan A

Exit your home through the closest door, close the door behind you and go to your meeting place. Call 9-1-1. Make sure the fire department knows when everyone is out.

Plan B

When you can't safely escape through the closest door, you may need to use a back exit or a window. If you can, close the window/door behind you as you leave. Then go to your meeting place and call 9-1-1. Make sure the fire department knows when everyone is out.

Plan C

If you can't get out, get behind a closed door and call 9-1-1, telling the dispatcher where you are inside the home.

If you can't get out, use PLAN C.

- Get into a room as far away from the fire as possible and close the door.
- Once inside, call 9-1-1, telling the dispatcher where you are and that you cannot get out.
- Stay low to the floor.
- Turn on the light in the room if you can.
- Cover the cracks in the doors with clothes, towels, drapes, or anything else available.
- Cover the air vents if needed.
- If smoke is entering the room and air is needed, open the window to keep the smoke above your head. Start by opening the lower pane and remove both if it becomes necessary.
- Remain near the window for fresh air.
- Make yourself known to the firefighters when they arrive — wave, signal with a flashlight, call out for help.



START PLANNING NOW!



Learn more at closeyourdoor.org.
© 2022 Underwriters Laboratories Inc. All rights reserved.

Make Your Escape Plan

1. Talk it through.

Meet with everyone who lives in your home to discuss what to do in case of a fire emergency. Write down your escape plan.

2. Draw a map of your home.

Include each level of your home, every room, window, door and all other exit points.

3. Determine two ways out of every room and what to do if you can't get out.

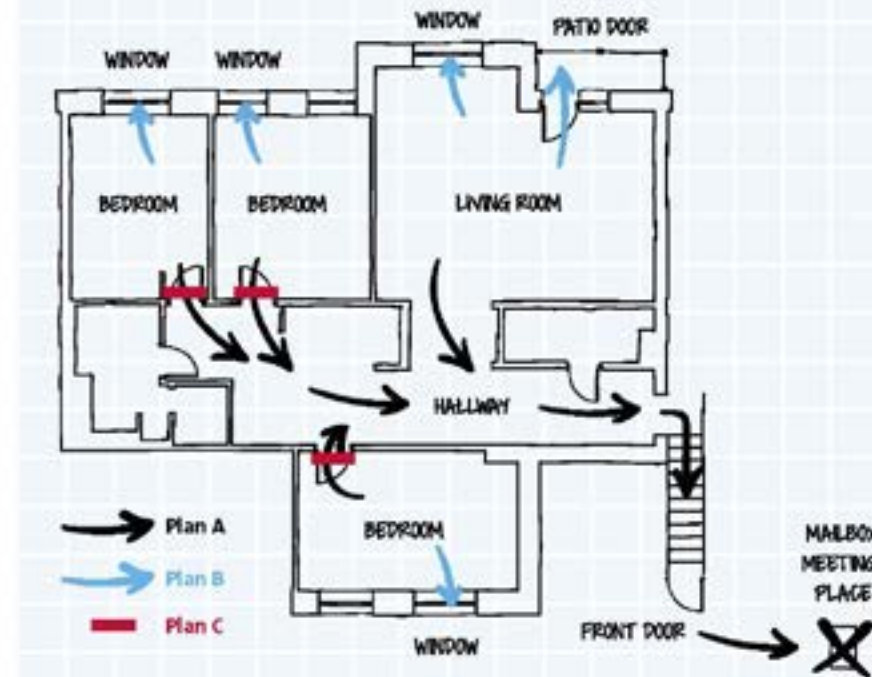
If one way is blocked or already filled with smoke and fire, having an alternate route will save time. If you can't exit safely, get behind a closed door and call 9-1-1.

4. Designate an outside meeting place.

It is important for everyone to have an agreed upon meeting place outside so that the fire department can confirm whether everyone is out or if someone may be inside.

5. Review and practice your escape plan.

Discuss and practice this plan with everyone living in the home including any overnight guests. Make sure everyone understands Plan A, B, and C.



A B

If you can get out,
STAY OUT!
Call 9-1-1 and tell the fire department when everyone is out of the house.

C

CAN'T GET OUT?
Follow your Plan C!
Get behind a closed door and call 9-1-1. Tell the dispatcher exactly where you are and that you cannot get out.

Talk it through. Map it out. Practice your plan.

Use the graph paper provided on the next page or any blank sheet of paper to draw out your plan. The most important step is to make sure everyone in your home understands and is capable of following the plan.



Learn more at closeyourdoor.org.
© 2022 Underwriters Laboratories Inc. All rights reserved.



UPCOMING COMMUNITY EVENTS

Palatine Summer Farmers' Market

The Palatine Farmers' Market continues every Saturday morning through Halloween (October 26, 2024) in the train station parking lot from 7 a.m. to 1 p.m. Starting Saturday, November 2, the Winter Market will open from 9 am to 12 noon every first and third Saturday through April. Visit the Palatine Farmers' Market serving our community since 1991, year-round. For a list of winter vendors and contact information to place orders, visit our **website**.



Rotary Club of Palatine Oktoberfest



Friday, September 20 - Sunday, September 22

The Oktoberfest celebration is held in downtown Palatine at the corner of Smith and Slade Streets. Free admission, authentic German music and food and activities for all ages! Raffles will be held to support local charities and community projects.

- Friday, September 20, 5 p.m. to Midnight
- Saturday, September 21, Noon to Midnight
- Sunday, September 22, Noon to 6 p.m.

To view a complete schedule of events or for more information, visit **Palatine Rotary Club**.

Palatine's Cemetery Walk

Sunday, September 22

The Palatine Historical Society's annual Cemetery Walk is Sunday, September 22, from 1 - 4 p.m. at Hillside Cemetery (on Smith Street between Colfax and Northwest Highway). Enjoy guided tours of Hillside Cemetery as costumed actors play the roles of Palatine residents of the past.



This year's theme is Early Settlers of the 1800s. Tours start every 10-15 minutes, with the last tour beginning at 3:30 p.m.

Cost: Adults \$10, Members \$8, School kids \$5, Preschoolers - free. Payment at the event, cash or check.

For more information, visit **palatinehistoricalsociety.com** or call 847-991-6460.

2024 Business Expo & Community Showcase

Saturday, October 5

Falcon Park, 10 a.m. - 2 p.m.



The Palatine Area Chamber of Commerce is pleased to present the 2024 Business Expo & Community Showcase, featuring over 50 exhibitors, BBQ & ice cream food trucks, pet adoptions on site, petting zoo, animal show, entertainment, giveaways, and 50/50 cash raffle all provided by local area businesses and organizations. Something for all ages at this FREE to attend indoors/outdoors event! To learn more visit the **palatinechamber.com**

Trick or Treat in Downtown Palatine

Saturday, October 26, 10 a.m. to 2 p.m.



Get your costumes on and come out to Trick or Treat in Downtown Palatine.

Participating businesses will have candy and treats for the whole family.

Visit the Downtown Palatine Business Association **website** for more information!

PALATINE VILLAGE HALL WILL BE CLOSED

**Thursday, November 28 &
Friday, November 29, 2024**

In Observance of Thanksgiving

Wednesday, December 25, 2024

In Observance of Christmas

Wednesday, January 1, 2025

In Observance of New Year's Day



Follow us

@villageofpalatine



Follow us

@PalatineIL