

[Having trouble viewing? Click here.](#)



December 27, 2024

Village Offices Closed January 1, 2025



Holiday Waste Collection Schedule

Wednesday garbage and recycling collection will be

delayed one day due to the New Year's Day (1/1) holiday.

Monday and Tuesday garbage and recycling collection will continue as regularly scheduled.

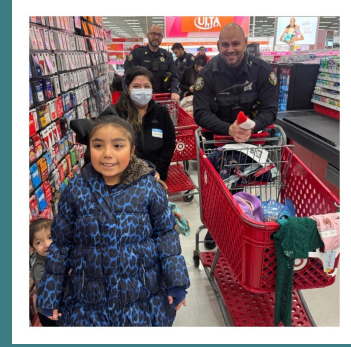
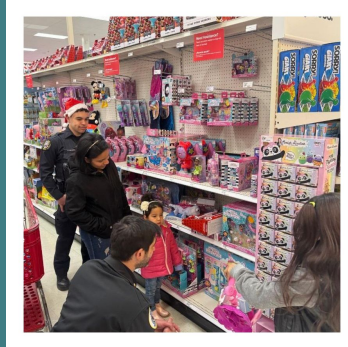
Live Christmas trees and wreaths can be placed at the curb on your collection day during December and January.

Important reminder: Please have all items at the curb by 6:30 am. Also, do not place carts in the street.

For more information, contact the Environmental Health Division at 847-359-9042 or visit our [website](#).



Palatine Police 2nd Annual "Shop with a Cop"



The Palatine Police Department's 2nd annual "Shop with a Cop" was a huge success! Thanks to the generosity and support of our Police Officers, the Police Department's Social Workers, and **Partners for Our Communities**, we were able to make this holiday season extra special for local children and their families.

Thank you to our incredible partners who helped make this event possible:

- **Target** Store Palatine for hosting and creating a welcoming space for our families!
- **Palatine Citizen Police Academy Alumni Association** for their continuous support of our department and community!
- **Harvest Bible Chapel** volunteers for giving of their time and talent to wrap all the great gifts the families picked out!

Together, lasting memories were made. Thank you to everyone who supported and participated in this wonderful event!

Drive Merry & Bright this Holiday Season

With the holiday season just around the corner, the Palatine Police Department has joined forces with the Illinois Department of Transportation for the "Drive Sober or Get Pulled Over" and "Drive High, Get a DUI" enforcement campaign to ensure that festive gatherings don't end in tragedy.

From Dec. 13 through Jan. 2, law enforcement agencies across Illinois will adopt a zero-tolerance policy for impaired driving to keep our roads safe.

The Palatine Police Department urges everyone to take the following simple steps to prevent impaired driving:

- Plan ahead: Designate a sober driver, use public transportation or arrange for a ride-sharing service.
- Report dangers: If you spot an impaired driver, pull over safely and contact 911.
- Be a hero: Stop a friend from driving impaired by taking their keys and helping them get home safely.
- Buckle up: It's your best defense against impaired drivers.



This campaign is made possible through federal highway safety funds from the National Highway Traffic Safety Administration administered by IDOT.



Holiday Overnight Parking

The Village is suspending its Village-wide overnight parking restrictions during the holiday period from Thursday evening, December 19, 2024 through the morning of Thursday, January 2, 2025. You may park vehicles on the street overnight during this time.

This holiday parking suspension DOES NOT include commercial vehicles. The Village's Code of Ordinances defines commercial vehicles as "any motor vehicle used by or for a business or service which may or may not bear any sort of advertising for that business or service."



Holiday Light Recycling

The Village of Palatine, in partnership with the Solid Waste Agency of Northern Cook County (SWANCC) and Elgin Recycling, is pleased to offer a Holiday Light Recycling Program now until January 31, 2025.

Holiday string lights can be dropped off at the Palatine Village Hall, Village Services Counter (first floor), Monday through Friday from 8 a.m. to 4 p.m.

Upcoming Community Events

Palatine Winter Farmers' Market
Palatine Train Station
January 4

Winter Camp
Salt Creek Park District
December 23, 26, 27, 30
January 2, 3

Noon Year's Eve Party
Salt Creek Sports Center
December 31

Puzzle Palooza
Palatine Park District
January 3

Bingo
American Legion
January 10

(click on the event name for more details)

WE'RE HIRING!



- ASSISTANT CIVIL ENGINEER OR ASSISTANT VILLAGE ENGINEER
- ENGINEERING INTERN
- FIREFIGHTER
- POLICE OFFICER



[Learn More](#)



[Meetings & Agendas](#) | [Employment](#) | [Event Calendar](#) | [Service Request](#)

Monday through Friday
8:00 a.m. to 4:00 p.m.
847-358-7500



Village of Palatine | 200 E Wood Street | Palatine, IL 60067 US

[Unsubscribe](#) | [Update Profile](#) | [Constant Contact Data Notice](#)



Try email marketing for free today!