

VILLAGE OF PALATINE



200 E. Wood Street
Palatine, IL 60067
palatine.il.us

Fall/Winter
Newsletter

2025



200 East Wood Street
Palatine, IL 60067
palatine.il.us
village@palatine.il.us

Village Hall Hours:
8:00 a.m. to 4:00 p.m.
Monday through Friday

Directory

Mayor

Jim Schwantz

jschwantz@palatine.il.us

847-359-9007

Village Clerk

Maureen Pasqualucci

mpasqualucci@palatine.il.us

847-359-9020

District 1

Greg Langer

glanger@palatine.il.us

847-894-0001

District 2

Scott Lamerand

slamerand@palatine.il.us

847-894-0002

District 3

Doug Myslinski

dmyslinski@palatine.il.us

847-894-0003

District 4

Joseph Falkenberg

jfalkenberg@palatine.il.us

847-894-0004

District 5

Kollin Kozlowski

kkozlowski@palatine.il.us

847-894-0005

District 6

Brad Helms

bhelms@palatine.il.us

847-894-0006

VILLAGE PHONE NUMBERS

Emergency 911

TDD (Emergency) 911

Village Hall 847-358-7500

Village Action Line 847-705-5200

Community Services 847-359-9042

Fire (Non-Emergency) 847-202-6340

Police (Non-Emergency) 847-359-9000

Public Works 847-705-5200



DOWNTOWN PUBLIC REALM ENHANCEMENTS



In 2024, the Village engaged Design Workshop, Inc. to prepare design concepts for streetscape, parking, public gathering, and signage improvements throughout the downtown area.

These conceptual improvements, which include several active and passive public spaces, pedestrian improvements, and reconfigured public parking lots, were presented to the Village Council in May 2024. The conceptual improvements included enhanced downtown entry features, streetscape and outdoor dining improvements, parking and wayfinding signage, extension of the downtown rail walk system, and public gathering/event spaces.

The first phase of this project is under construction now - the public/private partnership with Builtech LLC for the reconfiguration of their parking lot at **50 N. Brockway Street**. This enhancement will provide additional downtown public parking for evenings, weekends, and holidays. It will also enhance lighting, landscaping, sidewalks, and underground utilities. **Work on this parking lot is expected to be completed by December 2025.**

The next phase will focus on wayfinding signage throughout the downtown, as well as reconfiguring Slade Street to introduce more pedestrian-friendly and al fresco dining amenities. **Slade Street construction is expected to start in early 2026 and continue through the end of 2026.**



PALATINE POLICE REMIND MOTORISTS: STAY ALERT WITH SCHOOL BACK IN SESSION

Back-to-School season means an increase in pedestrians and bicyclists in traffic during morning and afternoon commutes. Not only are children walking to school and bus stops, they are also riding bicycles and crossing the street.

The Palatine Police are reminding the public about the importance of focusing on roadway safety as children across the state head back to school, especially laws specific to the safety of children in school zones and while boarding buses.

Drivers approaching a stopped school bus with lights activated and sign extended must stop their vehicle before reaching the school bus.

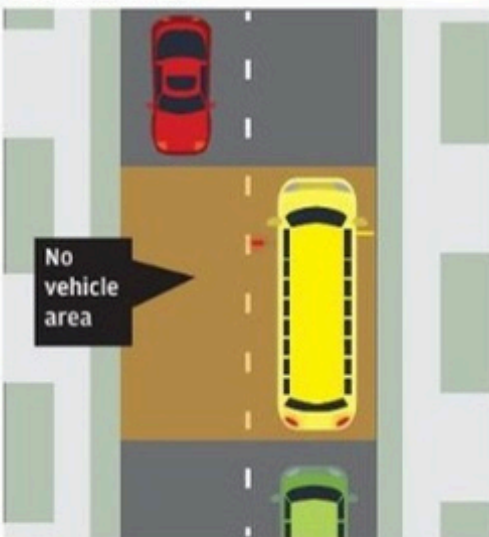
A first-time violation for failing to stop for a school bus while their lights are activated and stop arm extended can result in a mandatory **\$300 fine** and a **three-month suspension of driving privileges**.



When do I need to stop?

All school buses in Illinois are required to have stop sign safety arms. Motorists have to stop if the arm is extended or flashing lights are lit.

TWO-LANE ROADS



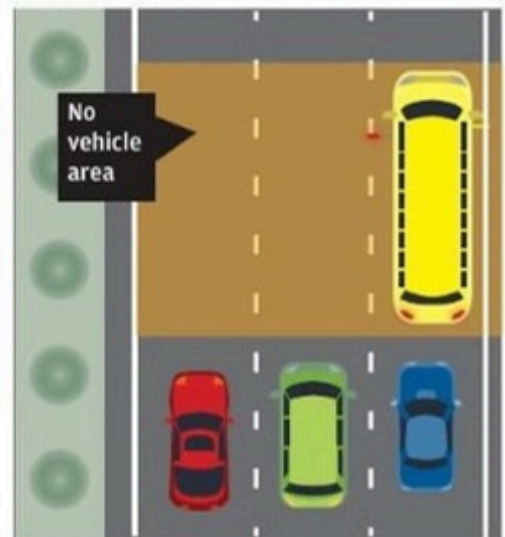
On two-lane roads, all traffic in both directions must stop if there's a stopped school bus.

FOUR (OR MORE)-LANE ROADS



When a school bus is traveling on a four-lane road with at least two lanes of traffic going in the opposite direction, only the lanes of traffic traveling in the same direction as the school bus must stop.

ONE WAY ROADS



When a school bus is traveling on a one-way roadway and is stopped to pick up or drop off pupils, all lanes of traffic must stop, regardless of the number of lanes.

VILLAGE ADOPTS E-BIKE/E-SCOOTER REGULATIONS



The Village of Palatine has adopted a new ordinance establishing clear rules for the use of untitled motor driven vehicles (electric bicycles and electric scooters). While these devices have become increasingly popular with youth and young adults, their rapid growth has raised safety concerns in our community. This ordinance provides consistent standards to improve safety and align Palatine with neighboring municipalities. View the ordinance [here](#).

WHY THIS ORDINANCE WAS ADOPTED

- Rising reports of unsafe riding, near-misses, and crashes.
- Requests from residents for clear rules and enforcement.
- A need to protect both riders and pedestrians while maintaining regional consistency.

KEY PROVISIONS

- Where you can ride: E-bikes and e-scooters are prohibited on sidewalks and state/county highways. They may only be used on Village streets.
- Equipment standards: Vehicles must have working brakes, reflectors or lights after dark, and follow posted speed limits.
- Rider requirements: Operators must hold a valid driver's license or permit if under the age of 18. Helmets are required for all riders, and operators must comply with all Illinois Vehicle Code rules. Passengers, carrying items with both hands occupied, or modifying speed controls are prohibited.

REGIONAL CONSISTENCY

Palatine joins several local municipalities that adopted similar ordinances in 2024–2025, setting age limits, helmet requirements, and restricting sidewalk use.

EDUCATION AND ENFORCEMENT

Implementation will begin with an emphasis on education. The Village and Police Department are sharing plain-language rules through schools, community partners, retailers, and social media. Enforcement will begin with warnings, and data will be tracked to guide future safety efforts.



E-SCOOTER AND E-BIKE SAFETY



The popularity of electric bikes and electric scooters (e-bikes and e-scooters) has taken off over the past few years. Lithium-ion batteries are usually the source of power for both, and if not used correctly, or if damaged, those batteries can catch on fire or explode. Whether you use e-bikes or e-scooters as your main way of getting around, or just for fun, there are important safety tips to keep in mind when charging or storing these devices.

The Problem

- Damaged or defective batteries can over-heat, catch fire, or explode.
- Lithium-ion battery fires give off toxic gases and they burn extremely hot.

Safety Tips

- Only purchase and use devices, batteries, and charging equipment that are listed by a nationally recognized testing lab and labeled accordingly.
- Always follow the instructions from the manufacturer.
- Only use the battery and the charger that were designed for, and came with, the device.
- Do not keep charging the device or device battery after it is fully charged.
- Only charge one device or device battery at a time to prevent overloading the circuit.
- Keep batteries at room temperature when possible. Do not charge them at temperatures below 32°F (0°C) or above 105°F (40°C).
- Do not store batteries in direct sunlight or inside hot vehicles, and keep them away from children and liquids.

- Store e-bikes, e-scooters, and batteries away from exit doors and anything that can get hot or catch fire.
- Only have device repairs performed by a qualified professional.
- Do not put lithium-ion batteries in the trash. Recycling is always the best option. Take the batteries to a battery recycling location or contact your local waste department for disposal instructions.

Signs of a Problem

Stop using the e-bike or e-scooter if you notice any of these problems with the battery: unusual odor, change in color, too much heat, change in shape, leaking, smoking, or not keeping a charge.



If you see a fire ...



Leave the building immediately.



Don't try to fight the fire.



Call 911.

**LEARN
MORE**

Visit nfpa.org/ebikes



**NATIONAL FIRE
PROTECTION ASSOCIATION**

The leading information and knowledge resource
on fire, electrical and related hazards





Everyone wants to have a safe and Happy Halloween for themselves, their guests, and their children. Using safety tips and common sense can help you make the most of your Halloween season, and make it as enjoyable for your kids as it is for you. The Palatine Police Department would like parents and youngsters to keep some important safety tips in mind.



Halloween Safety Tips



Make sure children are accompanied by an adult or responsible teenager when they go door-to-door.



Instruct children never to eat anything until they are home and the treats have been examined. Do not allow children to eat any homemade goodies



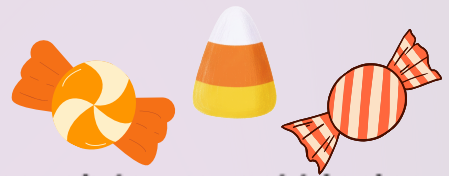
Check the treat wrappers for signs of tampering



Call the police if there are any suspicious treats



Make sure children's costumes fit, they are short enough to prevent tripping, and that they can see well. Remember, using face paint makes it easier to see than wearing a mask.



Tell your children to trick or treat in their own neighborhood, and to stay on well lit streets. Daylight hours are best!



Teach your children not to go inside any home, yard, or garage



If children are going to be out after dark make sure they carry a flashlight. Reflective clothing or tape is also a good idea.



Know which friends your children will be with and which route they will be taking



Leave your porch light on so children know it is ok to visit your home



Teach your children to use the sidewalks and to watch out for traffic



Keep costumed children away from pets. The pet may not recognize the child and could become frightened.



2025/2026 HOLIDAY WASTE COLLECTION SCHEDULE

Mark your calendar for these holidays that will affect your waste collection by Groot. Save and post this handy schedule for reference throughout the year and save yourself from hauling the garbage to the curb a day early or missing your collection entirely.



| Week of | Holiday | Collection |
|-------------------|------------------|------------------------------|
| December 22, 2025 | Christmas Day | Regular Schedule |
| December 29, 2025 | New Year's Day | Regular Schedule |
| May 25, 2026 | Memorial Day | All Collection one day later |
| June 29, 2026 | Independence Day | Regular Schedule |
| September 7, 2026 | Labor Day | All Collection one day later |

Please have all waste at the curb by 6:30 a.m. on collection day and do not place carts in the street.

Curbside yard waste collection will end the week of December 8, 2025 and resume March 30, 2026.

For more information, contact the Environmental Health Division at 847-359-9042.

PREVENT HOLIDAY FRAUD

Nobody would fall for a con if it appeared to be fraudulent. Therefore, many frauds look legitimate at first glance. Most cons attract victims by advertising a "too good to be true" deal, offering a free gift, promoting a "once in a lifetime" business opportunity, or the chance to earn some quick cash.



Typically, during the holiday season, and in light of recent tragic events, charity frauds can occur. **To help protect yourself from fraud during the holidays, follow these easy guidelines.**

First, if someone solicits a donation in person, ask to see official identification that includes the name of the solicitor and their organization. Make sure you recognize the name of the charity. Most of the better-known charities are very reputable. Find out the purpose of the donation. Ask, specifically, how the money will be used. You may also request written information on the organization and its functions. Ask the solicitor if contributions are tax deductible. If you are not satisfied with the answers given to these questions, or if the solicitor can't answer your questions, do not contribute money to that organization.

If a solicitor reaches you by telephone, ask questions about the organization and its function. Request that the solicitor send you written information about the charity and how the funds will be used. Never give credit card information to a person who calls to solicit funds. Be suspicious of charities that only accept cash. If you send money to the charity by check, make the check payable to an organization, not an individual.

NEVER GIVE MONEY TO A SOLICITOR THAT PRESSURES YOU INTO DONATING!



PALATINE POLICE CELEBRATE FIRST NATIONAL NIGHT OUT



On August 6, 2025, the Village of Palatine proudly hosted its inaugural **National Night Out** at Falcon Park, drawing an estimated 2,500 community members. From 5:00 to 8:00 p.m., residents of all ages gathered for an evening that blended public safety outreach, community engagement, and family fun.

The event featured police and fire vehicle displays, safety demonstrations, and booths from local organizations, offering residents valuable information and resources.

Families enjoyed live music, food vendors, and children's activities, creating plenty of opportunities for neighbors to connect and for residents to engage directly with first responders.

National Night Out successfully met its objectives of promoting crime prevention awareness, strengthening police–community relationships, and fostering neighborhood camaraderie.

Feedback from attendees was overwhelmingly positive, with many community members expressing their enthusiasm for making National Night Out an annual tradition in Palatine.

A special thank you goes to the **Palatine Park District**, whose support with planning, space, logistics, and resources made this first-ever event possible.

We also extend our gratitude to the **Palatine Police Boosters**, whose planning, fundraising efforts, volunteer support, and dedication behind the scenes were instrumental in ensuring the event's success. Their partnership reflects the very spirit of community that National Night Out is meant to celebrate.



**THIS EVENT WOULD NOT HAVE BEEN POSSIBLE WITHOUT
THE GENEROUS SUPPORT OF OUR SPONSORS:**



**THEIR CONTRIBUTIONS HELPED BRING THE COMMUNITY TOGETHER FOR
THIS SPECIAL EVENING & WE ARE GRATEFUL FOR THEIR PARTNERSHIP.**

CURBSIDE LEAF COLLECTION

There will be three leaf collections for each Palatine single-family residence between **the week of Monday, October 27, and the week of Monday, November 17.**

- Raked leaves must be put into the street and ready for pick up **no later than 7 a.m.** on the Monday of your scheduled week, but **no earlier than 4 p.m.** on the day **prior** to collection.
- Crews will start the pickups on Mondays and continue throughout the week until all the leaves have been collected in the scheduled zones.
- **Pickup on a certain day cannot be guaranteed.** Collection is anticipated to be complete by Thursdays each week, but may finish sooner depending on the volume of leaves.
- **There will be only one pass down each street during each collection week;** the large volume of leaves does not allow for trucks to return a second time.

The final leaf pickup opportunity will take place the week of Monday, November 17.

Crews will start the final pickup on Monday and continue throughout the week until all the leaves have been collected. Leaf piles set out after crews have completed the final pickup will not be collected and must be bagged for the weekly household yard waste pickup.

Refer to the map and schedule or use our [Leaf Collection Map](#) or [Collection Day Lookup](#) to determine your collection zone and pickup weeks.

| ZONE | COLLECTION BEGINS |
|-----------|-------------------|
| ALL ZONES | OCTOBER 27 |
| 1-4 | NOVEMBER 3 |
| 5-8 | NOVEMBER 10 |
| ALL ZONES | NOVEMBER 17 |



(leaf collection continued)

IMPORTANT REMINDERS:

- Avoid parking over a pile of leaves because a warm car can ignite leaves underneath it and create a fire hazard.
- Do not park on the street during pickup days because vehicles block the curb for leaf collection equipment.
- Do not rake leaves around the edges of cul-de-sac islands because the equipment cannot make small enough turns around the islands. Rake them to the residential curbside.
- Clean leaves from neighborhood storm sewer inlets to help prevent flooding during rain. Rake leaves into the street about 12 inches from the curb to allow for drainage.
- Rake leaves into the street on the pavement. **Leaves raked just over the curb or on the parkway cannot be picked up.** Streets without curbs should have leaves piled as close to the shoulder of the road as possible, without hindering vehicular traffic.
- Place leaf piles away from trash and recycling bins where possible.
- Do not include non-leaf material (grass clippings, branches, dirt, etc.) because they can damage equipment and cause safety issues. **Piles with any debris besides leaves will be left at the curb.**
- **If you hire a landscaping service, notify them of the collection schedule.** Landscapers must follow the same guidelines and may not place leaves in the street any earlier than 4 p.m. on the day prior to collection. *Property owners are responsible for the actions of their contractors and may be subject to a fine. If your landscaper is coming earlier than the day before your pickup, ask them to either haul the leaves away or place the leaves in the parkway and then you can put them in the street prior to 7 a.m. on collection day.*

Timing is Everything

Do not rake leaves into the street too early. Piles left accumulating for several days before the scheduled pickup can be carried away by wind or rain, and block storm sewer inlets which could cause flooding in yards or basements. *Please be patient if crews run behind schedule.* Weather, equipment problems, and the amount of leaves to pick up may slow down the collection process, but crews will be there to pick up the leaves.

Why Can't You Schedule Later Pickups?

Timing of the leaf collection schedule is driven by when the equipment needs to be ready for snow removal efforts. All the trucks and end loaders used for leaf collection are part of the front-line snow removal equipment. It is a lengthy process to prepare the trucks, which includes installing the nose plow equipment, inspecting and modifying the underbelly plows under the trucks (which stay on year-round), and installing and calibrating the liquid calcium tanks and salt spreaders. The entire conversion takes as long as 2 weeks as there are more than 20 pieces of equipment to transition. Therefore, leaf pickups cannot be made any later than the current schedule. Crews begin converting the equipment during the week of Thanksgiving, after the final collection week of November 17. *The Village will monitor the weather and announce if conditions allow for an additional all zone sweep.*

In Case of Snow or Ice

An early snowfall seriously hampers leaf collection efforts. Leaves raked to the curb will most likely be plowed back onto the parkway. Public Works will make every attempt to collect leaves raked back into the street.

Bag Leaves for Pickup Option

Residents have the option to collect fallen leaves in yard waste bags and place them on the curbside for weekly household refuse pickup. This flexible option works well for those who do not want to commit to the timeframe of the scheduled leaf collection program. Final scheduled pickup for **curbside bagged yard waste and bundled brush** will occur the week of **December 8, 2025**.

2025 HOMETOWN PRIDE AWARD WINNERS

The Village of Palatine Beautification Commission recognized homes, businesses, subdivisions, and 'Doors' of Palatine with the 2025 Hometown Pride Awards. Entries were submitted by residents and business owners. Judging is based on overall curb appeal, design and maintenance. This year's winners are:

1st Place Winners



Single-Family
1037 W. Partridge Drive



Multi-Family
1273 E. Inverrary Lane



**Cul-De-Sac/
Subdivision**
Willow Walk Homeowners'
Association

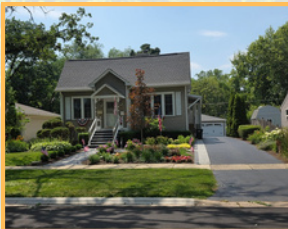


Doors of Palatine
607 N. Clark Drive



Business
Palatine Park
District Family
Aquatic Center

2nd Place Winners



Single-Family
162 S. Greeley Street



**Cul-de-Sac/
Subdivision**
Palatine Park
District-Mallard Park



Doors of Palatine
1045 W. Yale Court



Business
Second City Canine
Rescue

3rd Place Winners



Single-Family
607 N. Clark Drive



**Cul-de-Sac/
Subdivision**
Bridge View West
Homeowners
Association



Doors of Palatine
937 N. Williams Drive



Business
Palatine Park
District-Palatine
Hills Golf Course

KEEP THOSE CREEKS CLEAN AND NATURAL



Today, creeks bear little resemblance to their natural state. Originally they meandered, with broad areas that stored floodwater when needed.

Early farming straightened creeks and filled low areas to maximize cropland, and urban development continued this practice. Fortunately in the 1970s, the benefits of creeks and floodplains were realized and laws were passed to regulate construction in them. Now the focus is to improve water quality and preserve or reverse the loss of natural habitat. As the Village undertakes creek maintenance projects, we restore stream banks and install native plants that enhance water quality and natural habitats.

Unfortunately, some people view creeks as places to get rid of yard waste. After all, it's no different than what grows there naturally and eventually decays.

WRONG! It's illegal to deposit any debris, including branches, leaves or dirt, into or next to creeks, ponds, ditches or other areas that collect storm water. Besides being unsightly, this can cause blockages that aggravate flooding. Material left on banks can kill the vegetation under it, causing soil erosion.

Dumping also impairs water quality. The Clean Water Act's goal is to make all waterways fishable and swimmable. Though few people may want to swim or fish in Salt or Buffalo Creeks, their water quality affects the Des Plaines and Illinois Rivers into which they flow.

Phase 2 of the Act focuses on polluted storm water runoff. Sources can be oils, chemicals and debris from streets or parking lots; fertilizers and pesticides; soil and other contaminants from construction; and dumping of chemicals and other wastes into creeks or sewers.

Village Ordinances prohibit discharges to the storm sewer system of anything but storm water. This includes, but is not limited to, motor oil, antifreeze and other automotive fluids; paints, solvents or cleaning fluids; water from processes like carpet cleaning; and animal waste. All inlets and drains discharge into a pond or creek. Anyone found discharging into waterways or the storm system is liable to prosecution and subject to a penalty fine.

To learn more about different ways to help prevent water pollution, visit the U.S. Environmental Protection Agency's [website](#). To report possible illegal discharges to the storm drain system, call the Public Works Department at (847) 705-5200.

SNOW REMOVAL

Winters are usually a challenge for almost everyone in the Midwest area. But when the snow begins to fall or icy conditions are present, the Department of Public Works is ready to set its snow and ice removal operation plans into motion to get the streets cleared and motorists on their way as safely as possible.

The Village plows 167 center lane miles, which are divided into 11 routes with 2 trucks assigned to each route for a plowing event. Depending on the type and amount of snowfall, it takes approximately 6 to 7 hours to clear 15 miles of streets (the typical length of a route).

Major streets are plowed first, such as Northwest Highway and Palatine and Hicks Roads. Then the secondary and residential streets, including cul-de-sacs, are cleared.

Please remember that the Snow Plowing Team works as efficiently as possible to maintain safe roads throughout the Village.



The Village does not plow certain State or County Roads. The Illinois Department of Transportation (IDOT) is responsible for *Rand, Dundee and Algonquin Roads, Hicks Road north of Dundee Road and Route 53*. The Cook County Department of Transportation and Highways (CCDOTH) is responsible for *Lake Cook, Quentin and Roselle Roads, Euclid Avenue and Wilke Road south of Route 53*.

PARKING ON STREETS

Residents can help by not parking vehicles on any public street within a 24 hour period after an accumulation of **2 or more inches of snow** or when snow removal is in progress. Illegally parked cars that are interfering with snow plowing operations may be ticketed and towed at the owner's expense. Cars are towed only when absolutely necessary and every effort is made to tow the vehicle to a nearby location. *If your car has been towed, please call the Police Department at (847) 359-9000 for information on its location.*

SIDEWALKS AND SNOW PLACEMENT

Designated sidewalks are cleared by the Village when 3 or more inches of snow falls. The selected sidewalks are main routes to schools or on higher volume roads to help keep children and other pedestrians from walking in the streets. Some of the routes include the sidewalks along portions of:

- Dundee Road
- Hicks Road
- Illinois Avenue
- Northwest Highway
- Palatine Road
- Plum Grove Road
- Quentin Road
- Rand Road
- Rohlwing Road
- Smith Street

Homeowners are not required to shovel the public sidewalk adjacent to their property. However, the Village encourages residents to clear the sidewalks for the safety of pedestrians and children walking to school. State law protects property owners from any added liability if they shovel the sidewalks.

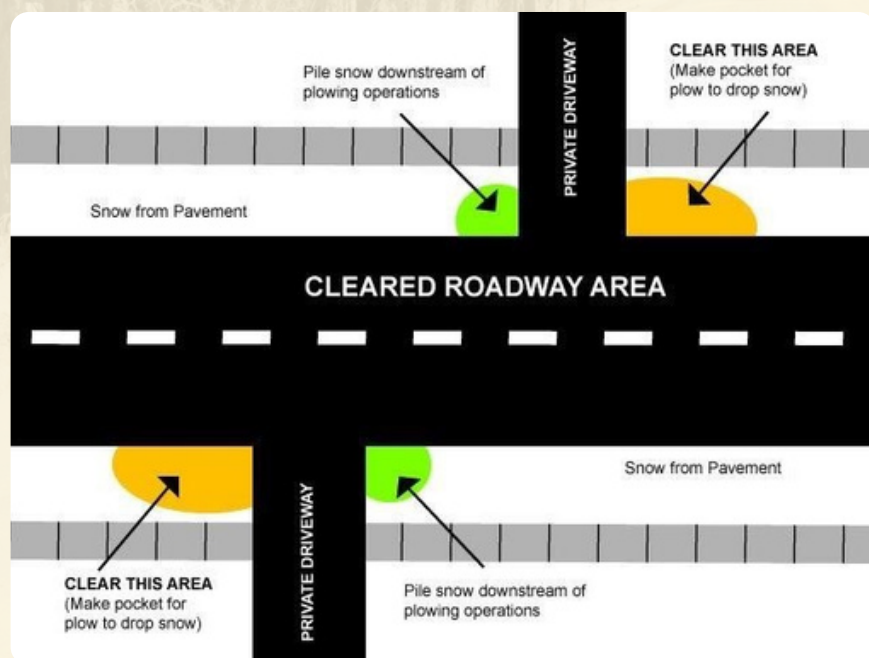
SNOW REMOVAL *(continued)*

DRIVEWAYS

Unfortunately, plow trucks will push snow into driveways during a plowing event. This is an unavoidable inconvenience, but there are a few tips you can use when clearing snow to minimize the amount plowed onto your driveway.

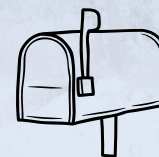
When possible, save time and prevent frustration by waiting to clear the bottom of your driveway until after the plows have completed the final pass from curb to curb.

You can also reduce the amount of snow dumped onto your driveway by clearing an area “upstream” of the driveway. This allows more snow to roll off into that pocket and less onto the driveway.



CURBSIDE MAILBOXES

Snow plow drivers make every effort to plow the snow as close to the mailbox as possible so mail can be delivered. However, it is very difficult, especially on cul-de-sacs, to completely clear snow without risking damage to mailboxes or posts. Therefore, drivers may err on the side of caution and not clear the snow up to the curb line. Residents are responsible for removing snow from around their mailboxes to ensure mail carriers can reach the mailboxes.



If you believe your curbside mailbox was damaged by a Village snow plow, report it to Public Works at (847) 705-5200 or by email to PublicWorks@palatine.il.us. A

temporary mailbox will be set up so you can continue to receive mail delivery. Every effort will be made to repair your mailbox. If that is not possible, it will be replaced with a standard metal mailbox and/or standard pre-treated wood post. The Village is not responsible for mailboxes if they do not meet Village Code or if they are damaged by non-Village vehicles.

When shoveling snow from driveways or sidewalks, please refrain from throwing or blowing it back onto an already plowed street. Doing so can create a hazardous condition for motorists. Village ordinances prohibit plowing, blowing or shoveling snow into any public street, onto a public sidewalk or on a parkway across from your property. We understand it is sometimes difficult to find a place to deposit snow, but putting it in a street or parkway not adjacent to your property could result in a fine.

For more information about snow removal, visit our [website](#) or call Public Works at (847) 705-5200.

FEBRUARY BRUSH COLLECTION

GUIDELINES

- Brush must be 8" or less in diameter to accommodate the chipper.
- Firewood, tree stumps, and root balls will not be accepted because of the potential damage to the chipper.
- Clean Christmas trees (without lights or decorations) will be accepted.
- Branches should be as long as possible with cut ends facing the street, without impeding traffic or the sidewalk.

Crews will pass down each street just once.

Piles set out after February 2 will be left at the curb. If amounts of brush are excessive, the collection may take the entire week to finish. The collection may also be delayed due to snow or other weather conditions.

The Village will monitor the weather conditions and announce if the collection week will be rescheduled on our website, in the emailed PalatineE-Newsletter ([sign up here](#)) and on our [Facebook](#), [Instagram](#) and [X \(formerly Twitter\)](#) pages.

A curbside brush collection for single-family residences will occur once during the winter season in February of 2026.

All loose brush must be set out at the curb no later than 7 a.m. on Monday, February 2, 2026.



Thanksgiving Safety

The kitchen is the heart of the home, especially at Thanksgiving. Kids love to be involved in holiday preparations. Safety in the kitchen is important, especially on Thanksgiving Day when there is a lot of activity and people at home.

- Stay in the kitchen when you are cooking on the stovetop so you can keep an eye on the food.
- Stay in the home when cooking your turkey and check on it frequently.
- Keep children away from the stove. The stove will be hot and kids should stay 3 feet away.
- Make sure kids stay away from hot food and liquids. The steam or splash from vegetables, gravy or coffee could cause serious burns.
- Keep the floor clear so you don't trip over kids, toys, pocketbooks or bags.
- Keep knives out of the reach of children.
- Be sure electric cords from an electric knife, coffee maker, plate warmer or mixer are not dangling off the counter within easy reach of a child.
- Keep matches and utility lighters out of the reach of children — up high in a locked cabinet.
- Never leave children alone in room with a lit candle.
- Make sure your smoke alarms are working. Test them by pushing the test button.

Did you know?



Thanksgiving is the leading day of the year for home fires involving cooking equipment.

Have activities that keep **kids out of the kitchen** during this busy time. Games, puzzles or books can keep them busy. Kids can get involved in Thanksgiving preparations with recipes that can be done **outside** the kitchen.



**NATIONAL FIRE
PROTECTION ASSOCIATION**
The leading information and knowledge resource
on fire, electrical and related hazards



ELECTRIC PORTABLE SPACE HEATER SAFETY

When the weather turns cold, it can bring a chill into our homes. Portable space heaters have become a popular way to supplement central heating or heat one room. If you plan to use portable electric space heaters, make sure to follow these tips and recommendations:

HEATER CHECKLIST

- Purchase a heater with the seal of a qualified testing laboratory.
- Keep the heater at least 3 feet (1 metre) away from anything that can burn, including people.
- Choose a heater with a thermostat and overheat protection.
- Place the heater on a solid, flat surface.
- Make sure your heater has an auto shut-off to turn the heater off if it tips over.
- Keep space heaters out of the way of foot traffic. Never block an exit.
- Keep children away from the space heater
- Plug the heater directly into the wall outlet. Never use an extension cord.
- Space heaters should be turned off and unplugged when you leave the room or go to bed.



FACT

Two in five deaths in space heater fires involve portable electric space heaters.



To learn more visit the [**NFPA website**](https://www.nfpa.org/).



Hoarding and Fire: Reducing the Risk

Do you have a person in your life who may be a hoarder? Hoarding is a condition where a person has persistent difficulty discarding personal possessions. The large amount of possessions fill the home and prevent the normal use of the space. Living space becomes cluttered. It may be unusable. Hoarding brings distress and emotional health concerns.

WHY HOARDING INCREASES FIRE RISKS

- Cooking is unsafe if flammable items are close to the stove or oven.
- Heating units may be too close to things that can burn. They might also be placed on unstable surfaces. If a heater tips over into a pile, it can cause a fire.
- Electrical wiring may be old or worn from the weight of piles. Pests could chew on wires. Damaged wires can start fires.
- Open flames from smoking materials or candles in a home with excess clutter are very dangerous.
- Blocked pathways and exits may hinder escape from a fire.

HOW HOARDING IMPACTS FIRST RESPONDERS

- Hoarding puts first responders in harm's way.
- Firefighters cannot move swiftly through a home filled with clutter.
- Responders can be trapped in a home when exits are blocked. They can be injured by objects falling from piles.
- The weight of the stored items, especially if water is added to put out a fire, can lead to building collapse.
- Fighting fires is very risky in a hoarding home. It is hard to enter the home to provide medical care. The clutter impedes the search and rescue of people and pets.

How Can You Help Reduce the Risk of Fire Injury

- ✓ When talking to a person who hoards, focus on safety rather than the clutter. Be empathetic. Match the person's language. If they call it hoarding, then you can call it hoarding.
- ✓ Help the residents make a home safety and escape plan. Stress the importance of clear pathways and exits. Practice the plan often. Exit routes may change as new items are brought into the home.
- ✓ Install working smoke alarms in the home. Test them at least once a month.
- ✓ Reach out to community resources. Talk to members of the fire department to alert them of your concerns. They may be able to connect you with members of a hoarding task force for additional help.

Palatine Fire Department

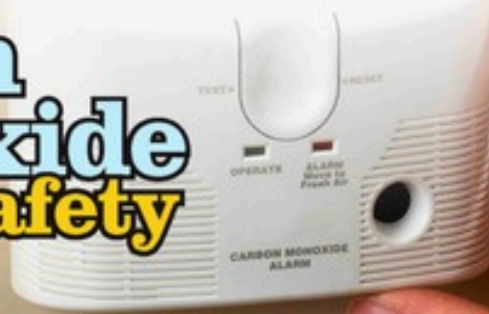
847-202-6340



Your Source for SAFETY Information

NFPA Public Education Division • 1 Batterymarch Park, Quincy, MA 02169

Carbon Monoxide Safety



Often called the invisible killer, carbon monoxide is an invisible, odorless, colorless gas created when fuels (such as gasoline, wood, coal, natural gas, propane, oil, and methane) burn incompletely. In the home, heating and cooking equipment that burn fuel can be sources of carbon monoxide.

- CO alarms should be installed in a central location outside each sleeping area and on every level of the home and in other locations where required by applicable laws, codes or standards. For the best protection, interconnect all CO alarms throughout the home. When one sounds, they all sound.
- Follow the manufacturer's instructions for placement and mounting height.
- Choose a CO alarm that is listed by a qualified testing laboratory.
- Call your local fire department's non-emergency number to find out what number to call if the CO alarm sounds.
- Test CO alarms at least once a month; replace them according to the manufacturer's instructions.
- If the audible trouble signal sounds, check for low batteries. If the battery is low, replace it. If it still sounds, call the fire department.
- If the CO alarm sounds, immediately move to a fresh air location outdoors or by an open window or door. Make sure everyone inside the home is accounted for. Call for help from a fresh air location and stay there until emergency personnel declare that it is safe to re-enter the home.
- If you need to warm a vehicle, remove it from the garage immediately after starting it. Do not run a vehicle or other fueled engine or motor indoors, even if garage doors are open. Make sure the exhaust pipe of a running vehicle is not covered with snow.
- During and after a snowstorm, make sure vents for the dryer, furnace, stove, and fireplace are clear of snow build-up.
- A generator should be used in a well-ventilated location outdoors away from windows, doors and vent openings.
- Gas or charcoal grills can produce CO — only use outside.

HOME HEATING EQUIPMENT



Have fuel-burning heating equipment and chimneys inspected by a professional every year before cold weather sets in. When using a fireplace, open the flue for adequate ventilation. Never use your oven to heat your home.

FACTS

- ❗ A person can be poisoned by a small amount of CO over a longer period of time or by a large amount of CO over a shorter amount of time.
- ❗ In 2010, U.S. fire departments responded to an estimated 80,100 non-fire CO incidents in which carbon monoxide was found, or an average of nine calls per hour.



**NATIONAL FIRE
PROTECTION ASSOCIATION**
The leading information and knowledge resource
on fire, electrical and related hazards





Downed utility lines, power company blackouts, heavy snow falls or summer storms can all lead to power outages. Portable generators are a temporary solution to power appliances. It's important to know that portable generators emit carbon monoxide (CO), a poisonous, deadly gas. Use these tips to avoid CO exposure:

- Use portable generators outdoors in well-ventilated areas at least 20 feet (7 metres) from all doors, windows, and vent openings. Measure the 20-foot (7 metre) distance from the generator to the building.
- Never use a generator in an attached garage, even with the door open.
- Place generators so that exhaust fumes can't enter the home through windows, doors or other openings in the building. The exhaust must be directed away from the building.
- Make sure to install carbon monoxide (CO) alarms in your home. Follow manufacturer's instructions for correct placement and mounting height.
- Turn off generators and let them cool down before refueling. Never refuel a generator while it is hot.



- Store fuel for the generator in a container that is intended for the purpose and is correctly labeled as such. Store the containers outside of living areas.

Just Remember...

When plugging in appliances, make sure they are plugged directly into the generator or a heavy duty outdoor-rated extension cord. The cords should be checked for cuts, tears and that the plug has all three prongs, especially a grounding pin.

If you must connect the generator to the house wiring to power appliances, have a qualified electrician install a properly rated transfer switch in accordance with the National Electrical Code® (NEC) and all applicable state and local electrical codes.

FACT

- ! Portable generator exhaust is toxic and deadly. Do not stand or sit downwind of generator exhaust. If you can smell exhaust, you are inhaling it.



**NATIONAL FIRE
PROTECTION ASSOCIATION**
The leading information and knowledge resource
on fire, electrical and related hazards





HOLIDAY LIGHT RECYCLING PROGRAM



The Village of Palatine, in partnership with the Solid Waste Agency of Northern Cook County (SWANCC) and Elgin Recycling, is offering a Holiday Light Recycling Program.



WHEN: November 3, 2025 until January 30, 2026

WHERE: Drop off at the Palatine Village Hall, Village Services Counter (first floor), Monday through Friday from 8 AM to 4 PM.

ACCEPTED ITEMS:

*Holiday string lighting (mini-lights, C7 & C9, rope, and LED)
Extension cords*

NOT ACCEPTED:

Wreaths, garlands, or other holiday decorations

IMPORTANT: DO NOT PLACE STRING LIGHTS OR EXTENSION CORDS IN YOUR RECYCLING CART.

For more information, contact the Environmental Health Division at 847-359-9042.
Help reduce waste this holiday season!

YARD WASTE COLLECTION ENDS FOR THE SEASON

Curbside collection of bagged yard waste and bundled brush by Groot will end the week of December 8, 2025. Collection will resume the week of March 30, 2026.

COLLECTION GUIDELINES:

- Place yard waste and brush at the curb by 6:30 AM on your scheduled collection day.
- Use two-ply brown paper bags or bundle yard waste. Each bag or bundle must not exceed 60 pounds.
- Branches or limbs should be no more than 4 inches in diameter; logs and tree stumps are not accepted.
- Tie bundles with biodegradable cotton twine or rope.
- Brush bundles should not exceed 4 feet in length or 2 feet in diameter.
- Christmas trees and wreaths can be placed at the curb on your collection day during December and January.

For further information, please contact the Environmental Health Division at 847-359-9042.

STEPS TO SAFE AND HEALTHY FRUITS & VEGETABLES

From the Store to Your Table

Fruits and vegetables are healthy to eat. But did you know that harmful germs, like *Salmonella*, *E. coli*, and *Listeria*, can sometimes be on fruits and vegetables? There are steps that can help keep you healthy—and your fruits and vegetables safer to eat—from the store to your table.



Fruit and Vegetable Safety at the Store or Market



Check for Bruises

- Choose fruits and vegetables that are free of bruises or damaged spots, unless you plan to cook them.



Keep Precut Fruits and Vegetables Cold

- Choose precut and packaged fruits and vegetables that are refrigerated or kept on ice.



Separate

- Separate fruits and vegetables from raw meat, poultry, and seafood in your shopping cart and in your grocery bags.

Fruit and Vegetable Safety at Home

Get fruits & vegetables home and in the fridge in 2 hours or less



Wash

- Wash your hands before and after preparing fruits and vegetables.
- Wash or scrub all fruits and vegetables under running water before eating, cutting, or cooking.
- Fruits and vegetables labeled "prewashed" do not need to be washed again at home.



Keep Cold

- Refrigerate cut, peeled, or cooked fruits and vegetables as soon as possible, or within 2 hours.
- Use a refrigerator thermometer to make sure the temperature stays at 40°F or below.



Separate

- Store fruits and vegetables away from, and not next to or below, raw meat, poultry, and seafood. These items can drip juices that may have germs.
- Use a separate cutting board for fruits and vegetables that is never used for cutting or preparing raw meats, poultry, or seafood.
- Wash cutting boards, counter tops, and utensils with hot, soapy water before and after preparing fruits and vegetables.

For more information, call 1-800-CDC-INFO or visit www.cdc.gov.

302879A

A possible warning: When these are used for food preparation, wash hands, cutting boards, and utensils.



U.S. Department of
Health and Human Services
Centers for Disease
Control and Prevention

BLOOD DRIVE



Palatine Community Blood Drive

DATE: THURSDAY, OCTOBER 16, 2025

TIME: 12:00PM - 4:00PM

Palatine Village Hall
200 E. Wood Street
Room Community B



Donate Oct. 1-31 and you'll be entered for a chance to win a \$10,000 gift card! That's enough to buy the latest tech gadget or device you've been eyeballing! Find out more at vitalant.org/TechGiveaway. Book your appointment today. Participating donors will receive a coupon for a pint of Culver's Frozen Custard.

PREPARE: EAT WELL, HYDRATE, BRING ID

To schedule an appointment, please call 877-258-4825 or
Visit donors.vitalant.org and enter Blood Drive Code: ORD0A103
Or Scan QR.

For more information visit us at vitalant.org or call
877-258-4825. **Because of you, life doesn't stop.**



vitalant. 

WEEKLY ELECTRONICS RECYCLING

Glenview Transfer Station

3 Providence Way, Des Plaines
Saturdays: 9:00 am - 11:30 am
Open Year-Round (except Saturdays following a holiday when garbage collection is delayed)

Hoffman Estates Vehicle Maintenance Facility

2405 Pembroke Avenue
Mondays: 10am - 12pm
April 7 - November 17

Mount Prospect Public Works

1700 W Central Road
Wednesdays: 10am - 12pm
April 9 - October 29

Winnetka Public Works

1390 Willow Road
Thursdays: 1pm - 3pm
April 3 - November 20



**Solid Waste Agency of
Northern Cook County**

swancc.org

The following locations host weekly drop-off for electronics collections for residents who live in any Solid Waste Agency of Northern Cook County (SWANCC) member community, including the Village of Palatine. There is NO FEE for this service and unloading assistance is provided. There is a limit of seven (7) items per household and no electronics can be accepted from municipalities, schools, businesses, or institutions. Items must be intact. Collection locations will be closed on national holidays and in severe weather. IDs will be checked. Do not drop off electronics other than during posted dates and times.

For more information, contact SWANCC at 847-724-9205 or visit swancc.org.

ACCEPTABLE MATERIALS



Cable Receivers
Cell Phones
Computer monitors
Computers
• Desktops
• Notebooks
• Tablets

Converter Boxes
Fax Machines
Keyboards
Mice
MP3 Players
Portable Digital Assistants (PDAs)
Printers (Multi-function Printers)

Satellite Receivers
Scanners
Televisions (All Types)
Video Game Consoles
Video Recorders/Players
Zip Drives



SAFELY DISPOSE OF SHARPS AND LIGHT BULBS

The Village of Palatine is offering a Special Materials Drop Off Program in partnership with the Solid Waste Agency of Northern Cook County (SWANCC). This **FREE** program is available for residentially generated special materials, including:

- Sharps (needles)
- CFL and fluorescent light bulbs

Eligibility

Only residents of SWANCC member communities, including Palatine, can participate. No waste from businesses, schools, or institutions is accepted.

Sharps (Needles)

- Container Requirements: Bring sharps in a red biohazard container or a rigid plastic laundry detergent bottle with a lid.
- Preparation: All sharps must be placed in containers at home. Loose or bagged sharps will not be accepted.
- Free Containers: The Environmental Health Division provides free 1-quart or 1-gallon sharps containers to residents who administer home injections (while supplies last).
- Disposal: When full, return the container for proper disposal.



Flourescent Bulbs and Tubes

- Accepted Items: Bring mercury-containing bulbs such as compact fluorescent lights (CFL) and fluorescent light tubes up to 4 feet in length.
- Exclusions: Do not bring incandescent or LED bulbs (these can be disposed of in the garbage) or any broken light bulbs/tubes.
- Packaging: All bulbs and tubes must be in a plastic bag.



Drop Off Location

- Address: Village of Palatine, 200 E. Wood Street - Village Services Counter, First Floor
- Hours: Monday - Friday: 8 am - 4 pm

For more information, visit our [website](http://swancc.org) or contact (847) 359-9042.



Palatine Winter Farmers' Market

Palatine Train Station Parking Lot

Saturdays, November - April

9:00 AM - 12:00 PM



OCTOBER

Palatine Police / DEA

Prescription Drug Take Back

Palatine Police Station, 595 N. Hicks Road

October 25, 2025

10:00 AM - 2:00 PM

Palatine Library Used Book Sale

700 N. North Court

October 10 - 12, 2025



District 1 & 2

Fall Residents' Meeting

200 E. Wood Street, Village Hall
Council Chambers

October 15, 2025

7:00 PM

Palatine Plaza Fall Fun Fest

211 - 333 E. Northwest Highway

October 18, 2025

11:00 AM - 2:00 PM



DPBA Trick or Treating Event

Downtown Palatine Businesses

October 25, 2025

10:00 AM - 2:00 PM

Trick or Treating Hours

October 31, 2025

3:00 PM - 7:00 PM



NOVEMBER

Holidays On The Town

Downtown Palatine

November 21, 2025

5:00 - 9:00 PM



Holiday Tree Lighting

Towne Square

150 W. Palatine Road

November 22, 2025

4:45 PM

Village Hall Offices Closed

in Observance of

Thanksgiving

Thursday, November 27, 2025

Friday, November 28, 2025



DECEMBER

Village Hall Offices Closed in Observance of Christmas/New Years

Thursday, December 25, 2025

Friday, December 26, 2025

Thursday, January 1, 2026



WELCOME NEW BUSINESSES

Beds in a Box

1852 N Rand Rd
224-801-8339
Mattress & Furniture Store

Beyond Tomorrow Comics LLC

327 N Northwest Hwy
847-705-6633
Comic Book Store

Boost Mobile

1705 N Rand Rd
847-496-4016
Authorized Boost Mobile Dealer

CFM Insurance Agency Inc

50 N Brockway St 300
847-934-0200
Insurance Agency

Etherheal Beauty Salon

248 W Northwest Hwy
847-496-7535
Beauty Salon

Euro Work Wear

855 W Northwest Hwy
224-451- 1773
Retail Workwear

Express Yourself Therapy

1 E Northwest Hwy 100
847-907-9227
Pediatric Therapy

Ferracane and Johnson

50 N Brockway St 4-7
847-359-8330
CPA Firm

FR Auto

415 W Colfax St 2
847-347-3972
Auto Repair

Garden Berry Café

440 W Northwest Hwy
224-539-8600
Restaurant

Goldmax Jewelry and Coin

960 E Dundee Rd
877-465-3629
Retail/ Sales /Purchase

Hill Technical Sales

50 N Brockway St 3-2
847-255-4400
OEM Manufacturers Representative

IHOP

948 E Dundee Rd
847-807-8880
Restaurant

Kings Head Grooming LLC

574 W Colfax St
847-770-3028
Manufacturing Cosmetics

La Blom Chicago Inc

1709 N Rand Rd 200
312-505-4989
Flower Shop

LD Insurance Group Inc

456 E Northwest Hwy 200
630-246-8405
Insurance Agency

Leleka Market

843 N Quentin Rd
845-654-3536
Ukrainian Grocery Store

Lex & JJ Properties LLC

670 E Northwest Hwy
847-221-5377
Commercial Rental Property Office

McAndrews Chiropractic & Functional Medicine Inc

236 E Northwest Hwy B
224-544-5777
Chiropractor

Mega-Pol Taxes & Accounting Inc

670 E Northwest Hwy
847-221-5377
Accounting & Tax Services

Millennium Cigar & Liquor

235 W Northwest Hwy
847-380-6771
Cigar & Liquor Store

Motor Beat LLC

632 W Colfax St
773-396-3097
Truck Repair

MOTW Coffee/ Pastries

1440 W Algonquin Rd
Coffee Café

Network Gates LLC

255 E Helen Rd 1001
773-786-7445
Online Retail

Northwest Community Healthcare

1200 W Algonquin Rd M
847-618-0852
Long Healthcare Facility

Original Korean Food

800 E Northwest Hwy 50
224-308-4113
Nam Kim Café- Korean Food

Parts Authority LLC

513 S Vermont St
847-963-0294
Auto Parts

Quentin Tap

783 N Quentin Rd
224-801-8954
Sports Bar & Grill

Re'Feel Café

1504 W Algonquin Rd
224-789-0180
Coffee Shop

Refined Interiors Inc

653 S Vermont St.
331-777-0555
Cabinet Design and Manufacturing

Skechers

637 E Dundee Rd
224-300-7259
Retail Footwear

Super Movers Inc

331 W Northwest Hwy 208
630-344-3146
Records Office

Supreme Roofing

200 E Northwest Hwy
847-787-7363
Roofing Company

Sushi + Thai by Sensei

309 E Northwest Hwy
224-808-3886
Restaurant

Technical Doctor LLC

1228 W Northwest Hwy
630-433-7453
Technical Consulting & Service