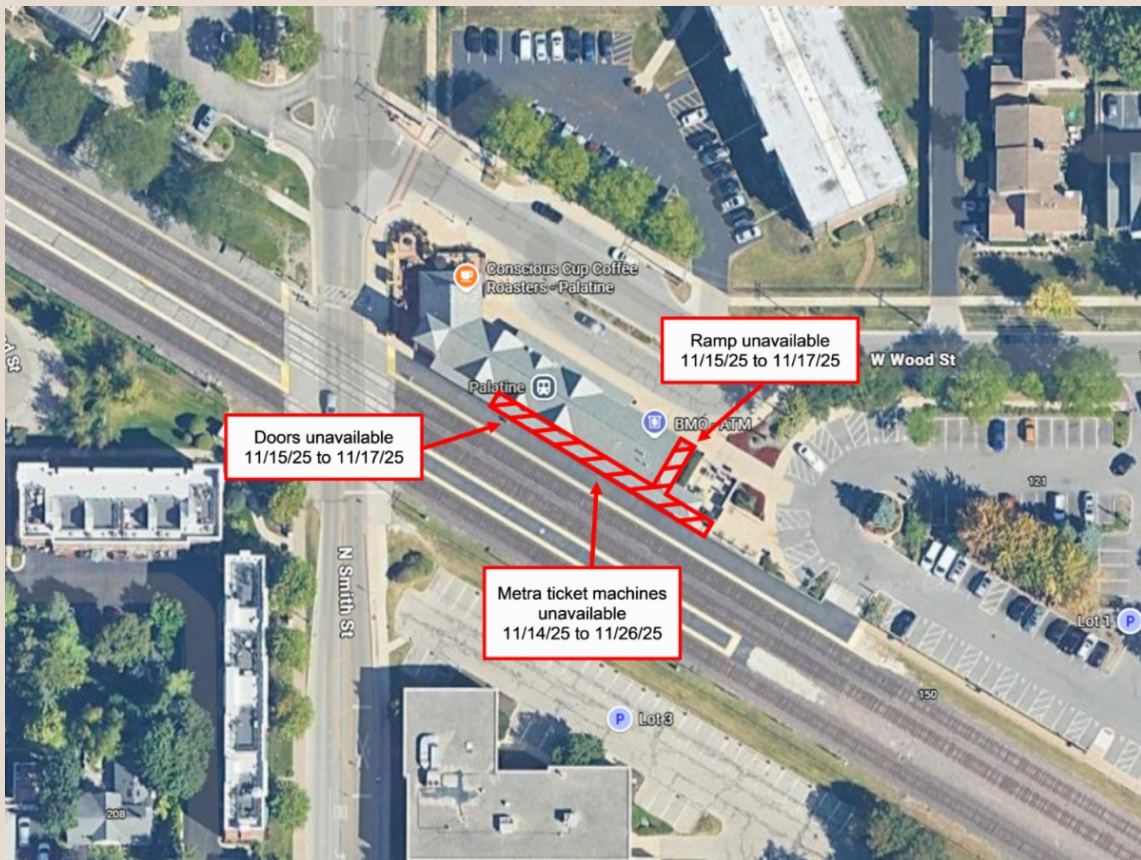


[Having trouble viewing? Click here.](#)



November 14, 2025



CONSTRUCTION ALERT: Palatine Metra Train Station Concrete Replacement

The Village of Palatine will be replacing concrete at the Palatine Metra Train Station this Saturday, November 15. The concrete walkway between the south side of the

station and the platform and the ramp along the east side of the station will be removed and replaced.

The train station and platform will remain open to the public during construction, but the center doors on the south side of the station and the ramp will be closed until Monday, November 17.

The Metra ticket machines will be removed from the platform on Friday, November 14, to accommodate the work. The machines will be reinstalled on Wednesday, November 26. Tickets will be available for purchase on the train or through the Ventra app during this time.

For more information about this public improvement project, please call the Public Works Department at (847) 705-5200.

Final Week of Curbside Leaf Collection Begins November 17

The Public Works Department will begin the final scheduled pickup of the Curbside Leaf Collection Program this Monday, November 17, 2025.

All zones must have their leaves placed in the street and ready for pickup by 7:00 a.m. that day. Crews will start the pickup on Monday and continue throughout the week until all the leaves have been collected. Only one pass will be made down each street.

Leaf piles set out after crews have completed the final pickup will not be collected and must be bagged for the weekly household yard waste pickup. Curbside bagged and bundled yard waste collection ends the week of December 8, 2025.



Public Works will continue to monitor the weather and announce if conditions allow for an additional all zone collection.

For collection guidelines and more information, visit our **website** or call Public Works at (847) 705-5200.

Fire Department Headquarters Move



The Fire Department has moved its administrative headquarters from Station 85 on Colfax Street to Station 82, 1475 N. Hicks Road. Their offices are open Monday–Friday from 8:00 AM to 4:00 PM. If you need assistance, stop by during business hours or give us a call at 847-202-6340. For emergencies or immediate assistance, always call 9-1-1.

Palatine Police Thanksgiving Campaign for Safe and Sober Driving

This Thanksgiving, Palatine Police is joining the Illinois State Police and local partners to keep holiday travel safe. Our “Click It or Ticket” and “Drive Sober or Get Pulled Over” enforcement campaigns run from Nov. 21 to Dec. 2.



Officers will be looking for seat-belt violations, speeding, distracted driving and impaired driving due to alcohol or drugs, including cannabis.

“Thanksgiving brings more vehicles, longer trips and more festivities,” said Commander Christopher Stearns. “Seat belts remain one of the simplest and most effective ways to save your life in a crash. We’re asking every driver and passenger to buckle up, every trip, every time — and to make a plan for a sober ride before the celebrations begin. If you drink alcohol or use cannabis, don’t drive.”

Plan ahead with these tips:

- Before you go out, choose a sober driver or plan to use a taxi, public transit or a rideshare service (Uber, Lyft, etc.).
- If you host, offer alcohol free beverages and help guests arrange sober transportation.
- If you’ve used cannabis, do not drive. Effects can be delayed and impair reaction time and judgment.
- If you see an impaired driver on the road, pull over safely and call 911.
- Make sure everyone in the vehicle wears a seat belt. It’s your best defense against an impaired driver.

This Thanksgiving enforcement effort is supported by federal traffic safety funds administered by the Illinois Department of Transportation and aligns with Illinois’ statewide “Drive Sober or Get Pulled Over,” “Click It or Ticket” and “It’s Not a Game” campaigns.

Holiday Light Recycling Program



The Village of Palatine, in partnership with the Solid Waste Agency of Northern Cook County (SWANCC) and Elgin Recycling, is pleased to offer a Holiday Light Recycling Program now until January 31, 2026.

Holiday string lights can be dropped off at the Palatine Village Hall, Village Services Counter (first floor), Monday through Friday from 8 a.m. to 4 p.m.

Accepted Items:

- Holiday string lighting (minilights, C7 & C9, rope, and LED)
- Extension cords

Not Accepted:

- Wreaths, garlands, or other holiday decorations

Important: Do not place string lights or extension cords in your recycling cart. For more information, contact the Environmental Health Division at 847-359-9042. Help reduce waste this holiday season!

League of Women Voters Host Special Presentation

Thursday, November 20

The League of Women
Voters of the Palatine,
Barrington, and
Schaumburg Areas



LEAGUE OF WOMEN VOTERS*
OF THE PALATINE, BARRINGTON AND SCHAUMBURG AREAS

(LWVPA), along with the STDL, will host a special presentation by the national nonprofit Braver Angels to help residents navigate difficult political conversations just ahead of the holidays.

The Civic Awareness Series event, "Navigating Difficult Conversations," is scheduled for Thursday, Nov. 20, 2025, from 7 p.m. to 8 p.m. CST at the Schaumburg Township District Library, 130 S. Roselle Rd, Schaumburg IL.

Reservations for both attending in person or by zoom can be found at STDL website schaumburglibrary.org/events or LWV of the Palatine, Barrington, and Schaumburg Areas lwvpalatinearea.org/calendar.

Upcoming Community Events

Palatine Winter Farmers' Market

Palatine Train Station
Saturday, November 15, 9:00 a.m.

Paint & Craft Night

Twin Lakes Clubhouse
Friday, November 14, 6:30 p.m.

Holiday Craft Fair

Salt Creek Sports Center
Saturday, November 15, 9:00 a.m.

Music on Stage - Elf the Musical

Cutting Hall Performing Art Center
Saturday, November 15, 7:00 p.m.

Elf School

Rose Park Community Center
Thursday, November 20, 4:30 p.m.

Tales for Tots

Immanuel Lutheran School
Thursday, November 20, 10:00 a.m.

Parents Night Out

Rose Park Community Center
Friday, November 21, 6:00 p.m.

New & Used Clothing Sale

Immanuel Lutheran Church
Saturday, November 22, 8:00 a.m.

Pop-Up Teacher Book Sale

Palatine Library
Saturday, November 22, 10:00 a.m.

Many Paws Global Adoption Event

Lamplighter Inn Tavern & Grille
Saturday, November 22, 1:00 p.m.

Turkey Trot & Sammy Scurry

Harper College
Thursday, November 27, 8:00 a.m.

(click on the event name for more details)

Holidays on the Town November 21

It's almost time for the annual DPBA (Downtown Palatine Business Association) annual Holidays on the Town. Enjoy an evening of local shopping, dining, community, and holiday cheer on Friday, November 21, 5 - 9 PM.

Learn
More



Holiday Tree Lighting November 22

The holiday season arrives with a visit from Santa at Towne Square Park, 150 W. Palatine Road, for the annual Holiday Tree Lighting!

Join us Saturday, November 22 from 4:45 p.m. to 7:00 p.m. and enjoy holiday music, hot chocolate, and pictures with Santa in the Towne Square gazebo.



Learn
More



PALATINE JAYCEES ANNUAL TREE & WREATH SALE

EVERY FRIDAY THRU SUNDAY, NOV 28 - DEC 21
(PENDING INVENTORY)

FAMILY AQUATIC CENTER PARKING LOT:
340 E PALATINE RD

FRI: 6PM-8PM
SAT: 9AM-8PM
SUN: 10AM-5PM

PHOTOS WITH SANTA
DECEMBER 13TH
10AM-1PM

DROP YOUR
LETTERS IN
SANTA'S MAILBOX
NOV 28 - DEC 14!



FOR FULL DETAILS & HOURS, VISIT PALATINEJAYCEES.ORG



WE'RE HIRING!

- PART-TIME SCHOOL
CROSSING GUARD

Learn more at palatine.il.us



Meetings & Agendas | Employment | Event Calendar | Service Request

Monday through Friday

8:00 a.m. to 4:00 p.m.
847-358-7500



Village of Palatine | 200 E Wood Street | Palatine, IL 60067 US

[Unsubscribe](#) | [Update Profile](#) | [Constant Contact Data Notice](#)



Try email marketing for free today!