

Village of Palatine

NEWSLETTER

Fall 2009

In this issue:

New Businesses, page 2
Holiday Festivities, page 3
Farmer's Market, page 4
Hometown Pride Winners, page 5
Street Fest Wrapup, pages 6-7
Emerald Ash Borers, page 9

OCTOBER 4-10, 2009



Bring the Whole Family for Everyone's Favorite Fall Event: The Palatine Fire Department's Open House on October 10!

Bring the cameras and the kids to the Palatine Fire Department's annual open house on Saturday, October 10. The event will run from 10:00 a.m. until 2:00 p.m. at Fire Station 84, located at 220 W. Illinois Avenue.

This family-friendly, interactive event will feature fire and rescue vehicles and equipment on display, station tours and refreshments. Our Dive Rescue, Hazardous Materials, Technical Rescue and Bike Medic teams will also have their equipment on display.

Fire extinguisher training, vehicle extrication demonstrations, representatives from local hospitals, representatives from the Palatine Police Department and the Palatine Emergency Management Agency (including the Palatine Community Emergency Response Team), the Harper College fire science program and the Palatine Fire Department Public Education Trailer will be present throughout the day.

In addition, there will be a flashover room demonstration, a fire behavior demonstration by "Mr. Wizard," and the Flight For Life helicopter.

Tentative schedule of events:

Vehicle/Equipment Displays and Station Tours	10:00 a.m.- 2:00 p.m.
Public Education Trailer Display	10:00 a.m.- 2:00 p.m.
Fire Extinguisher Operation	10:00 a.m.- 2:00 p.m.
Vehicle Extrication Demonstration	10:00 a.m.- 2:00 p.m.
Mr. Wizard Fire Behavior Demonstration	11:00 a.m.
Flashover Room Demonstration	12:00 p.m.
Flight For Life Helicopter	1:00 p.m.



Upcoming Events

OCTOBER FARMERS MARKET

October 3, 10, 17, 24 and 31;
see page 4

FIRE DEPARTMENT OPEN HOUSE

October 10,
10:00 a.m.-2:00 p.m.

SCARECROWS ON PARADE

Judging at Farmer's Market
on October 24; see page 3

CURBSIDE LEAF COLLECTION

Begins on October 12 (see
Leaf Collection Newsletter)

TRICK OR TREAT

October 31, 3:00-7:00 p.m.

NOVEMBER

DOWNTOWN MERCHANTS HOLIDAY OPEN HOUSE

November 20, 21; see page 3

HOLIDAY TREE LIGHTING

November 21

VILLAGE HALL CLOSED FOR THANKSGIVING HOLIDAY

November 26 & 27

DECEMBER

VILLAGE HALL CLOSED FOR CHRISTMAS HOLIDAY December 25

Palatine Continues to Attract New Businesses Village Welcomes a Variety of New Businesses To Our Community



The Village would like to welcome the following new businesses to Palatine. Please note that the businesses listed obtained a Village business license between April 1st and September 15 of this year. The list does not include home occupations or existing businesses that changed their ownership or address.

Welcome

Retail Stores/Services

Games Workshop Retail Inc
605 E Dundee Rd
(Hobby Store)

Backyard Grille
332 E Palatine Rd
(Concessions)

Volunteer Gear Inc
1270 W Northwest Hwy
(T-Shirt Distributor)

PGS Gold Buyers
830 W Northwest Hwy #8
(Gold Buyers)

The String Project
55 S Northwest Hwy
(Sales/Rental/Instruments)

Palatine Auto Mart
2088 N Rand Rd
(Auto Sales)

Midwest Gold Buyers
218 N Northwest Hwy
(Gold Buying)

Fix This Musical Instrument Repair
746 E Northwest Hwy
(Instrument Repair)

Viajes Alvarez Travel Agency
1190 E Dundee Rd
(Travel Agency)

Services/ Service Providers

DMC Group LLC
1226 W Northwest Hwy
(Consulting)

Enlightened Learning Corp
504 N Plum Grove Rd
Unit B
(Consulting/Coaching)

Ed Herbst Co
119 E Palatine Rd 203
(Mfg Rep/Bar Supplies)

Top 1 % Coaching
800 E Northwest
Hwy 720
(Real Estate/Courses)

Planet 10 Studios
800 E Northwest Hwy 60
(Recording Studio)

Technology Masters
201 E Dundee Rd Ste #10
(Computer Repair)

Editorial Solutions LLC
579 First Bank Dr. #250
(Editorial
Solutions/Publishing)

Ana Velez Tax Service
830 W Northwest Hwy 7
(Tax Service)

Hands On Driving School Ltd.
467 W. Northwest Hwy.
(Driving School)

Hair Styling

Salon Cienna
120 W Northwest Hwy
(Hair Salon)

Alexis Hair Salon
2001 N Rand Rd E
(Beauty Salon)

Contractors

Howies Electrical Service Inc
117 W Slade St Ste 110
(Electrical Contractor)

Home Goods & Services

American Deck Maintenance Inc
117 E Palatine Rd 109
(Deck Sealing)

Luggage & Leather Works
228 N Hicks Pl
(Luggage Repair)

Restaurants/Delis

Anthem Grill
704 W. Euclid Ave.
(Restaurant/Sports Bar)

Feast of Eden
800 E Northwest Hwy 50
(Café)



Change Your Clock – Change Your Batteries on November 1

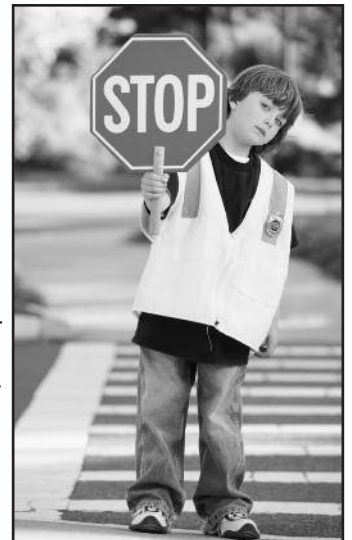
The end of Daylight Savings Time at 2:00 a.m. on Sunday, November 1st, is an ideal time to replace your old smoke detector and carbon monoxide detector batteries with fresh ones that will be sure to sound the alarm.

Smoke detector and carbon monoxide detector batteries should be changed twice a year. Why not do it at the same time you change your clocks?

It's sound advice from the Palatine Fire Department that could save your life.

Please . . . Keep Those Sidewalks Clear

School has started and that means many neighborhood children are using the sidewalks as they walk back and forth to school each day. Please be sure that vehicles in your driveway are not "hanging over" into the sidewalk area and obstructing access to the sidewalk. It is dangerous to force not only children, but pedestrians of all ages, into the street.



Walkers, joggers, moms and dads with strollers, and neighbors out enjoying a walk around the neighborhood on a beautiful fall day, will all appreciate being able to use the sidewalk. Please be a courteous neighbor.

News! News! News!

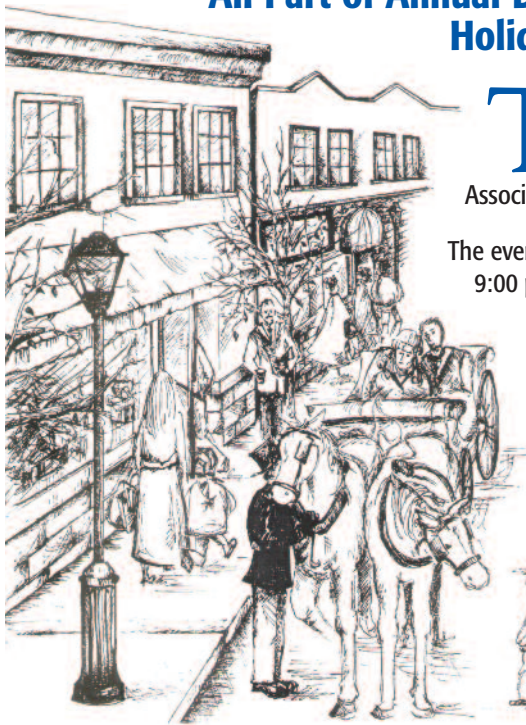
If you are someone who likes your news fast and current, then the Village of Palatine's electronic update service is for you. It's free and easy to sign up for the service on our website.

You will receive an electronic version of the Village Newsletter, as well as Village-related news and updates as information becomes available.

Sign up for this free service today on the Village website,
www.palatine.il.us.



Wine & Taste Walk, Special Promotions and Family Fun All Part of Annual Downtown Palatine Holiday Open House



The holiday season will officially arrive in Palatine the weekend of November 20-21 when the Downtown Palatine Business Association hosts its annual Holiday Open House.

The event kickoff on Friday, November 20 from 5:00-9:00 p.m. is an adult-oriented evening where patrons can visit downtown business establishments to browse, shop, eat and drink in a relaxing atmosphere. Friday night activities will include the second annual Wine & Taste Walk.

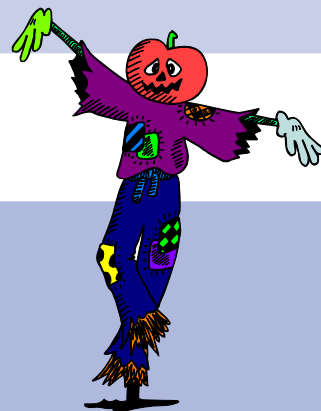
Saturday activities from 10:00 a.m.-5:00 p.m. are family-focused and include holiday shopping opportunities, special promotions, displays, workshops and seminars to add some fun and holiday spirit to the season.

Come for the Day, Stay to Watch Mayor Jim Schwantz Light the Village's Holiday Tree at Towne Square

The highlight of Palatine's holiday season kickoff is always the official tree lighting ceremony. Bring your camera and your holiday spirit to Towne Square at 5:00 p.m. on Saturday, November 21 as Mayor Jim Schwantz and Santa himself set the tree aglow.

Residents are invited to enjoy a variety of free activities both before and after the tree lighting, as well as entertainment and refreshments that will continue throughout the evening.

Check the Village's website, www.palatine.il.us for further information on both of these holiday events.



'Scarecrows on Parade' is Back!

The first-ever "Scarecrows on Parade" last fall was such a success that the event is back for 2009. It looks as if another great hometown tradition has come to Palatine!

For the second year, the Village of Palatine, the Palatine Beautification Commission, and Palatine Home Depot are sponsoring a community scarecrow decorating contest.

Any Palatine business, non-profit organization, school or sports affiliate, homeowners association, ecumenical or civic group, as well as individuals and families, are invited to participate in Scarecrows on Parade 2009. Twelve scarecrow "skeletons," built and donated by Palatine Home Depot, will be available on a first come, first served basis beginning at the end of September. Call the Public Works Department, (847) 705-5200 to check on availability. Representatives from participating groups will pick up their skeletons at the Public Works Facility, 148 W Illinois Avenue.

Each participating group will be responsible for bringing their scarecrow creation to the Farmers' Market by 9:00 a.m. on Saturday, October 24, 2009 to be judged. Awards will be presented at 12:00 noon at the Farmers' Market.

After the judging, all of the participating scarecrows will be put on display along the rail walk fence next to the Firemen's Memorial.

Interested? Don't wait! Call the Public Works Department today to let us know "You are in!" and then make plans to decorate the winning scarecrow!



Trick or Treat

Palatine's
Trick or Treat hours
are from **3:00-7:00 PM**
on **Saturday, October 31.**

Trick or Treat only at
those homes where the porch
light is on.

Palatine Farmer's Market Announces Don't Miss October Events

The cool weather has prolonged the season for fresh produce, allowing Palatine's Farmers' Market to continue through Halloween with all the ingredients for tasty fall soups and stews, salads and sauces, not to mention fresh fruit pies!

Jordan of Great Lakes Farms reports that, due to the weather, sweet corn is still fresh, tender and sweet, along with tomatoes, squash, kohlrabi, leeks, Brussels sprouts, cauliflower, egg plant, potatoes, beans and mushrooms. Michael and Daniel, the Indiana boys, have a full range of fall vegetables and pumpkins, gourds, Indian corn, corn stalks—everything for fall decorating. From his certified organic farm in Barrington, Peter Grubbe continues to bring organic produce, especially the green leafy varieties. Mike Churchill has 18-22 varieties of fresh-off-the-tree apples, pears and plums along with Concord and Niagara grapes for eating, cooking and wine-making.

Anne Copeland of the U of I Extension Master Gardeners offers tips on how to winterize your garden, and helpful hints on planting bulbs.

"It's time to stock up on spices, tea and coffee, nuts, condiments, soups, sauces and pasta, plus pancake mix, olive products, meats and all the gourmet treats available at the Market," said Market Manager Marg Duer, "and as the holidays approach, consider Gill's cheerful pottery, Kris's artful gourds, and Anna's watercolor cards—all are one of a kind original creations."

October brings special fall events at the Palatine Farmers' Market:

October 10: St. Michaels will have New Orleans style red beans and rice packets, Tabasco and Southern recipes. The proceeds from sales benefit Katrina victims and volunteers who continue rebuilding New Orleans.

October 17: Northwest Circle of Friends will be selling A Wagonload of Goodies cookbook to benefit Children's Advocacy Center of Northwest communities and the Palatine Food Pantry.

October 24: In conjunction with Sister Cities International, Palatine members will be walking with their counterparts in Fontenay-le-Comte, and other cities throughout the world. The walk will conclude at the Market at 10:00 a.m.

October 31: The Market welcomes Halloween ghosts and goblins to come in costume, enjoy the final Market of the season, trick-or-treat at each booth, and play traditional games.

The Market is held every Saturday morning, 7:00 a.m. to 1:00 p.m., at the Palatine train station. Parking is free. If you have questions about the Market, please call (847) 358-1649.



Members of St. Michael's Church don crab hats from New Orleans to sell red beans and rice to benefit Katrina victims and volunteers.

Are You Registered to Vote? It's Quick and Convenient at the Village Clerk's Office

Have you moved since you registered? Have you recently turned 18, or perhaps never registered to vote?

You can register quickly and conveniently at the Village Clerk's office. Voter registration is available during regular business hours, Monday through Friday, 8:00 a.m. – 5:00 p.m. Simply bring two forms of identification showing your name and current address (i.e. driver's license, state ID, checkbook, piece of mail, utility bill etc.).

In order to register to vote, you must be:

- A U.S. citizen
- At least 18 years old by Election Day
- A resident of your precinct at least 30 days prior to an election

Your voter registration is permanent unless you move. If you have moved since you last registered to vote, you will need to re-register.

Voters who legally change their name, but not their address, do NOT have to re-register. If you have changed your name, you can vote after updating your information at the polls.

You can check your voting eligibility by calling the Cook County Clerk's automated number, (312) 603-0906 or visit online at www.voterinfonet.com

You can register to vote in person anywhere in the State of Illinois that offers voter registration, including Village/City Halls, Township Halls, and County Offices.

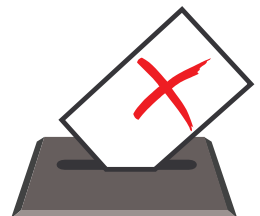
The Next Election is the February 2, 2010 Primary Election.

Voter Registration dates are:

- **January 5, 2010 –**
Regular Voter Registration Ends
- **January 6 – January 19, 2010 –**
Grace Period Registration and Voting
- **January 11 – January 28, 2010 –**
Early Voting Period

Applications for an absentee ballot by mail will be available beginning December 24th at

www.voterinfonet.com



Planning a Trip Out of the Country?

If your business or leisure travel plans will take you out of the country, remember that a passport is now required to travel to nearly all locations, including Canada and Mexico. Passports are also required for many cruise ship destinations.

For your convenience, the Village of Palatine Clerk's Office accepts passport applications on Friday and Monday only, from 8:30 a.m. – 12:00 noon.

For passport information and requirements, please visit the Village's website at www.palatine.il.us, and go to Village Clerk's Office/Passport Services. For passport application forms, questions, and further details, visit the website of the U.S. State Department at www.travel.state.gov or call the Palatine Clerk's Office at (847) 359-9051.

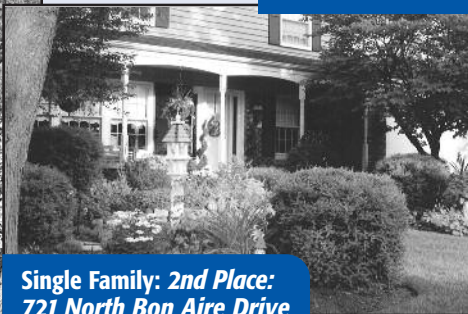


Congratulations to Our 2009

Hometown Pride Award Winners!



Single Family: 1st Place:
824 West Dorset Ave
Emily Duncan



Single Family: 2nd Place:
721 North Bon Aire Drive
Joan Thomas



Single Family: 3rd Place:
1013 West Elm
Rich and Denise Green



Multi-family: 3rd Place:
253 West Wood Street
Don Hashiguchi



Multi-family: 2nd Place:
1205 North Williams Drive
Mark Marubio



Multi-family: 1st Place:
108 West Wood Street
Valissa Hilligoss & Mary Winch



Business: 1st Place:
Palatine Inn,
95 West Northwest Highway
Jim and Pete Sarantopoulos

For the past 16 years, the Village of Palatine has sponsored the Hometown Pride program to recognize the efforts of individuals, businesses, and organizations that have beautified their surroundings for the pleasure of all citizens.

Twenty-six nominations were received this year. The difficult job of judging the entries went to members of the Village's Beautification Commission. Each photo entry was reviewed by each judge, and awards decided upon by the group.

Our congratulations to all of the entrants and winners.



Subdivision/Cul de Sac: 1st Place:
Bridgeview West - Quentin Rd at
Drew Lane {Home Owners Association}



Doors of Palatine: 2nd Place:
1351 East Michele Drive
Mary Unsen



Doors of Palatine: 1st Place:
1117 East Carpenter Drive
Jim and Judy Dunne

Palatine Street Fest 2009

Hometown Fun for Everyone!



Everyone who was looking for a great wrap-up to the summer season found it a Street Fest 2009! People of all ages and interests found great food, games, contests and entertainment at the Village's 10th annual end of summer event.

Headline entertainment included Sister Hazel, BritBeat, Sixteen Candles, and Ralph's World.

A big thank you goes to the more than 200 volunteers who helped to make Street Fest possible. We couldn't do it without you!

We look forward to seeing you next year for another great Palatine hometown event!!





And the 2009 winners are . . .



2009 PIE EATING CONTEST

Sponsored by Zimmer Hardware

WINNERS OVER 12 YEARS OF AGE

1st Place Ellen Wheeler

2nd Place Danny Goedken

3rd Place Jacqui Panerat

WINNERS UNDER 12 YEARS OF AGE

1st Place Josh Danielson

2nd Place Ross Hageline

2009 SWEET PEA PET PARADE

Sponsored by The Music Room
and Fox Glove Cottage

Best Home Made Costume:

Lucy, American Eskimo, owned by
Becky Harkin

Best Store Bought Costume:

Pearl, Maltese, owned by Judy Kinzie

Best Other (non-dog):

Mister Sniffles, Rabbit, owned by Mary Feit

Best Sports Fan:

Hando, Pug, owned by Brian Marx

Longest Ears:

Cleo, Basset hound, owned by Carol Cook

Pet/Owner Look-alike:

Daphne, Shih Tzu, owned by
Micaela Gaffo

2009 CHILI COOK-OFF

Sponsored by Harris Bank

PEOPLE'S CHOICE AWARD

1st Place Linda Steck

2nd Place Jim Bennett

3rd Place Jennifer Merle

JUDGES' CHOICE

1st Place Kenny Joerg

2nd Place Jim Bennett

3rd Place Ted Harro

The proceeds from the Chili
Cook Off were donated to
Palatine Township's
Apple Tree Campaign.

Thanks, Street Fest Volunteers – You Help Make This A Great Hometown Event!

Aaron Adams
Ann Adams
Janet McDermott
AichholzerJoe Aicholzer
Bonnie Alcaro
Kevin Alcaro
Terry Aldridge
Matt Amato
Kevin Anderson
Scott Anderson
Jodie Andrew
Amy Atherton
Jay Atherton
Mike Ballenger
Karen Balogh
Matt Banach
Sandor Barath
Jennifer Bartels
Sue Bartels
Terry Bartels
Nellie Beckner
Adam Begale
Jen Bemis
Norm Bemis
Bonnie Bennett
Matt Berry
Eleanor Betar
Margaret Betar
Sarah Betar
Nancy Bluver
Jeff Bober
Chris Brady
Cathy Brandel
Larry Brandel
Jim Brandt
Betsy Brink
James Brustad
Jeff Butterfield
Brandy Campise
Marc Campise
Chris Carr
Jackie Carrier
Kathy Carter-McLin
Judith Cimiglio
Roy Cipri
Troy Coleman
Sue Conn
Jack Cuthbert
Scott Cvetan
Denise D'Cruz
Deb Danecki
Mike Danecki
Aaron Del Mar
Janet Derken
Mark Dubinski
Kim Ducat
Joe Duer
Patty Dumbaugh
Chris Durkin
Jim Eipert
Alyssa Engelbrecht
Jim Eriksen Jr
Rick Evans
Bob Falardeau
Bill Farmer
Mark Fink
Karen Fitzgerald
Dick Fonte
Dulcy Fonte

John Forsberg
Mary Fox
Brian Freese
Erin Freese
Mike Freese
Randy Freise
Kristin Frerichs
Wayde Frerichs
Dave Gable
John Garby
Kathy Garcia
Tony Garcia
Diane Gartner
Kathy Gartner
Ron Gbur
Lesia Gemelli
Cory Gerstung
Sarah Glumm
Steve Glumm
Mary Goluszka
Michael Goluszka
Joe Gonzalez
Jack Gordon
Joan Gordon
Tom Gordon
Matt Gorecki
Nick Grasso
Nicole Gratzianna
Pat Gratzianna
Lu Gregory
Matt Grenning
Beth Grossman
Brad Grossman
Grant Grossman
Whitney Grossman
Bob Haas
Bill Hall
Janean Hallahan
Jeff Hallahan
Bob Hanson
Mary Hanson
Karen Harold
Brian Harrison
Debbie Heine
John Helpap
Joyce Hoiuchi
John Hoskins
Mark Hoskins
Jim Hrycko
Tricia Huber
Sandy Hustedt
Pam Jackson
Brigid Jacobs
Mike Jacobs
Doug Jarvis
Bill Jennings
Christina Johnson
Colleen Johnson
Fred Johnson
Jeff Johnson
Matt Johnson
Annette Kandell
Tom Kearns
Julianne Kennelly
Kevin Kennelly
Sheila Kesler
Kelly Kiekow
Linda Kielas
Judy Kinzie

Andrea Koeneman
Shane Koeneman
Elizabeth Konz
Elias Koutas
Jean Koutas
Nikko Koutas
John Koziol
Christine Kurowski
Beth Laing
Steve Laing
Dorothy Lance
Joe Lance
Debbie Landers
Mark Langguth
Jessica Latshaw
Vicky Laues
Marla Laurin
Terry Leighty
Jeanne Lenninger
Martie Lennon
Craig Lesselyoung
Merritt Lewis
Tim Maher
Rhonda Malcolm
Tim Malcolm
Brock Manor
Karla Manor
Speros Mantanes
Dominic Markiewicz
Richard Maxwell
Mary May
Mary May
Jim McCullar
Janet McDermot
Kayla Meservey
Scott Meservey
Jimmy Messineo
Andy Milewski
Nikki Milewski
Tim Millar
Mike Millington
Susan Minott
Nora Mitran
Vinnie Moag
Bob Morris
Jessica Mortimer
Joe Mueller
Liz Mueller
Bob Muench
Tom Murphy
Jeff Murrell
Karen Murrell
Todd Neicekowski
Steve Neiver
Graham Nelson
Eric Never
Jennifer Never
Dan Neyfeldt
Steve Niebuhr
Jack O'Connor
Scott Ohlrich
Brooke Opitz
Bryan Opitz
Edie Opitz
Reid Ottesen
Cathi Overend
Heidi Paulsen
Dan Petykowski
Joe Petykowski

Julie Petykowski
Carol Pfister
Becky Piliponis
Darald Piliponis
Steve Pitts
Wendy Pitts
Susan Podgorski
Bill Pohlman
Rich Portmann
Charlie Powers
Jackie Powers
Larry Pyzik
Andy Radetski
Julie Radetski
Dorothy Raef
Jennifer Ratkovich
Matt Rauen
Julie Ray
Tom Ray
Laurie Rayborn
Mark Raymond
Christine Rice
Dennis Rice
Ed Richter
Toby Roberts
Betty Rocha
Herb Rocha
Shannon Rotizza
Bill Rowe
George Ruppert
Megan Ruscheinski
Doris Sadik
Jim Samack
Sue Samack
Belen Sanchez
Barb Santi
John Schmidt
Larry Schroth
Mike Seebacher
Tracy Seebacher
Joe Siciliano
Marla Siegel
Philip Spatafora
Elizabeth Spila
Harry Spila
Jacob Spila
Mary Spila
Paul Spletzer
Dale Stankiewicz
Xochitl Stankiewicz
Joanne Stawinoga
Glen Stelzer
Carla Stilling
Terry Stilling
Laurie Stock
Al Stoeckel

Amanda Stoeckel
Cindy Stoeckel
Jennifer Summerhill
Debby Szewczyk
Marty Szewczyk
Ray Tam
Wally Terry
Steve Terzic
Kevin Thomas
Tracy Thrun
Liz Thurman
Susan Tibbitts
Ryan Tindnell
Chuck Towner
Linda Trilling
Neal Trilling
Steve Trilling
Dave Tuegel
Diane Tuegel
Mike Vargas
Vito Virgillio
Jim Vlcek
Laurie Vlcek
Dan Vrbancic
Diedre Vrbancic
Tracey Vrenios
Ben Vyverberg
Hugh Waddington
Jodi Waddington
Julie Wahl
Ken Wahl
Adam Walsh
Carol Warnstedt
Ron Warnstedt
Matt Webb
Nicole Weglarz
Danae Weiler
Phillip Weisnberger
Scott Wharton
Ernie Wickstrom
Char Wilson
Jim Wilson
Nicki Winikates
Christian Wollard
JoAnne Wollard
Natalie Wollard
Cindy Wolta
Don Wolta
Jan Wood
John Wood
Bob Worthly
Fred Yoo
Sonia Zavolokoff
Chuck Zimmerman
Georgette Zimmerman
Don Zipse



Understanding Easements

An easement allows another person the right to use your land for a specific purpose. The most typical easements are those granted to public utility or telephone companies to run lines on or under your private property.

What is a utility easement?

Utility easements are strips of land used by utility companies or municipalities to construct and maintain electric, telephone and cable television lines, water lines, and sewer services.

Who owns the utility easement?

The property owner owns all of the land including the utility easements. However, utilities have a right to access that portion of land which has been designated a utility easement.

How are utility easements created?

Utility easements are usually created at the time a plat for a new development is designed. Utility easements almost always exist along streets and along rear lot lines, and also exist between two lots.

Why is it important to keep easements clear?

Keeping utility easements clear helps utility companies perform routine maintenance (e.g. replace a pole), construct improvement projects (e.g. install a new sanitary sewer), and repair utility lines during emergencies (e.g. remove a tree which has fallen on a power line during a lightning storm.)

What if I build on an existing easement?

All utility companies, public and private, which have the right to use the utility easement, must give their written approval and required permits obtained before any accessory building can be built in an easement.

What if I build a fence in an easement?

Although the Village Code permits fences to be located in an easement, an obstruction in the way of a utility company lengthens outage or interruption times by making the utility company move



obstructions out of the way. The damage caused by moving an object out of the way or removing a fence is not the responsibility of the utility company. The utility company, by the rights of the easement, has the power to do what it takes to maintain the utility.

Can I place decorative landscaping on a utility easement?

Most utilities discourage decorative landscaping within the utility right-of-way. Any materials placed within the boundaries of the utility easement are subject to damage and are not the responsibility of the utility companies. Any replacement cost for such damages is at the discretion of the utility company.

What about damages to my landscaping from utility marking for construction?

By law, utilities have the right to mark utility locations in a discrete, non-obtrusive manner, within the boundaries of the utility easement. The type, color and location of these markings are regulated under state law. Although utilities will usually make an effort to limit damage to landscaping, all damage to landscaping located within the boundaries of the utility easement are the responsibility of the property owner.

How do I determine if there are easements on my property?

The Plat of Survey that you received as part of your home purchase should show any easements on your property.

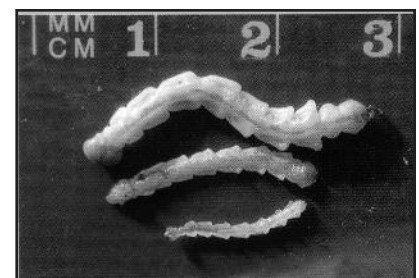
The Emerald Ash Borer has Arrived in Palatine: Here's What You Need to Know

Palatine is the latest area community to discover the ravages of the emerald ash borer (EAB). The EAB infestation was found in the northeast area of the Winston Park subdivision. The Illinois Department of Agriculture confirmed the infestation on June 17, 2009.

The EAB discovery was made on June 13, 2009, when a resident reported seeing what he described as the Emerald Ash Borer on a tree in Chestnut Park at Winston Drive and Palatine Road to the Village Forester. Village Forester, Charlie Powers, went out to survey the tree and was actually able to collect one of the beetles.

The Forester then contacted the Illinois Department of Agriculture to verify that the beetle was the Emerald Ash Borer. Based on its findings, the Department of Agriculture suspects that the Emerald Ash Borer has been present in Palatine for two seasons or longer. The Village of

Palatine has already put in place a strategic plan for removing declining, dying or structurally unsound ash trees on Village parkways and replacing them with several different species of trees to insure that no one pest or problem will lead to substantial tree devastation again.



Emerald Ash Borer larvae shown actual size.

Seventy parkway ash trees were removed and replaced in 2008 in the Northview area, with another 80 designated for removal in 2009 in the Winston Park area. Check the Village's website, www.palatine.il.us, for more information.

Village's Adjusts Budget to Reflect Economic Conditions

The Village recently reviewed the financial performance and outlook based upon the first six months of the year. The economic downturn has led the Village to decrease revenue projections by approximately \$1.7 million for the year and subsequently, reduce expenditures in its 2009 budget by a corresponding amount. These reductions were proposed to deliver a balanced budget at the end of the year. Reductions were spread throughout both operating and capital programs and projects.

The Village's main goal in making the reductions were to avoid cuts in core services providing for the public health, safety and welfare of our customers. The Village has also implemented a hiring freeze on vacant positions.

Looking ahead, the CY2010 Budget will be again be based upon planning and preparations for financial uncertainty. The Village, as always, is committed to review and reprioritize all Village services to make sure that the core programs addressing the public health, safety and welfare of its residents remain funded and delivered in an exemplary manner.

Village Seeking Drivers with CDL License for Snowplowing this Winter

If you have experience driving large trucks, have a valid Illinois class B commercial drivers license (CDL) with an air brake endorsement, can be available whenever needed and could use some extra money, the Department of Public Works wants you!

Applications available online at www.palatine.il.us as well as in person at:

Village of Palatine
200 E. Wood Street
Palatine, IL; and

Department of Public Works
148 W. Illinois Avenue
Palatine, IL

Or call (847) 705-5200.

Please apply by October 21, 2009.

Dispose of Your Prescription Drugs, Sharps, Compact Fluorescent Light Bulbs and Thermometers All in One Location

The Environmental Health Division is offering free drop off disposal programs for prescription drugs, sharps, compact fluorescent light bulbs and mercury thermometers which are sponsored by the Solid Waste Agency of Northern Cook County (SWANCC). Participation will ensure environmentally-safe disposal, prevent needle-stick injuries and guard against potential theft associated with the disposal of old medications in the garbage.

These programs are offered only to Palatine residents. Identification is required for verification of residency. Residential waste accepted only. No waste will be accepted from businesses, schools or hospitals.

Collection Location and Times:

Where: Village of Palatine
Environmental Health Division
200 E Wood Street

When: Monday-Friday
From 9:30 AM to 4:00 PM

Prescription Drugs:

No controlled substances will be accepted. For a list of controlled substances visit www.palatine.il.us or contact the Environmental Health Division at (847) 359-9090. Bring pharmaceuticals in their original containers with labels to identify contents. Personal information on label can be blackened out.

Acceptable Items:

Unused and expired prescription medications. Prescription cough syrup. Prescription eye and ear drops. Unused and expired over the counter medications.

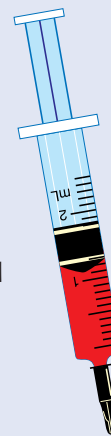


Unacceptable Items:

Controlled substances and non-prescription liquids.

Sharps/Needles

Bring sharps only in a rigid container with a lid. Containers must have a clear visible lid or be opened by resident upon request to view contents. No loose or bagged sharps will be accepted. The Environmental Health Division will also provide a free one-quart sharps container to residents who administer home injections, while supplies last. When the sharps container is full, the resident should bring the container back for proper disposal.



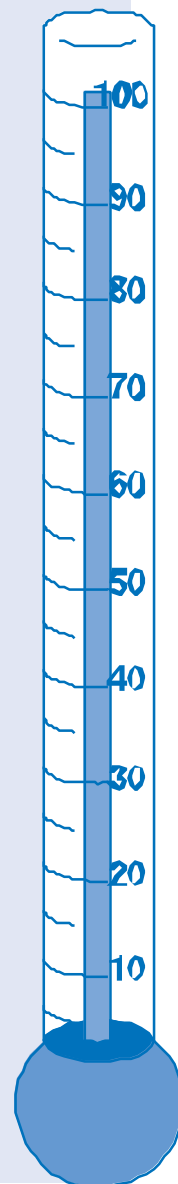
Mercury Thermometers, Switches and Thermostats

Bring mercury containing thermometers, thermostats and wall switches sealed in a plastic bag. Mercury thermometers will be exchanged for a new mercury-free thermometer at no cost while supplies last. Mercury-containing products should be replaced with safer alternatives, whenever possible, to prevent potential health risks.

Compact Fluorescent Light Bulbs and Fluorescent Lights

Bring compact fluorescent light bulbs and up to 4' fluorescent lights sealed in a plastic bag. Broken light bulbs will not be accepted.

Program brochures and additional information is available online at www.palatine.il.us and www.swancc.org or contact the Environmental Health Division at (847) 359-9090.



Palatine's Comprehensive Plan Update: Creating a Blueprint for Our Future Business, Housing & Transportation Needs

The Village of Palatine has initiated the process of rewriting and updating its Comprehensive Plan, which was adopted in 1990 and contains various amendments from the last 19 years. The Village has retained Camiros, a professional planning consultant, to assist in the development of a new Comprehensive Plan for Palatine.

What is a Comprehensive Plan?

A Comprehensive Plan is a long-term planning document designed to guide future development and preserve the existing community character. The Comprehensive Plan creates a vision and establishes goals for community development, with measurable steps, through the creation and implementation of policies and objectives. Ultimately, the plan is adopted by the Village Council and becomes the Village's main development tool. The general longevity for a community's Comprehensive Plan is approximately 15-20 years.

Summary of Palatine's 1990 Comprehensive Plan

In 1990, the Village saw itself as a community with a clear directive – as a community that “is, and desires to remain, a primarily single-family residential community.” The 1990 Comprehensive Plan has been used as the basis for zoning changes and development approvals as well as to provide guidance for transportation system and infrastructure improvements and direction for detailed planning studies for specific subareas. Since the Plan's adoption, there have been a number of amendments. These amendments have focused on changes in recommended land use and refinement of the circulation system as previously vacant land becomes available for redevelopment.

The Plan's goals were general expressions of community values and provided the framework for the Comprehensive Plan. The following goal statements were included in the 1990 Comprehensive Plan.

General Community Development

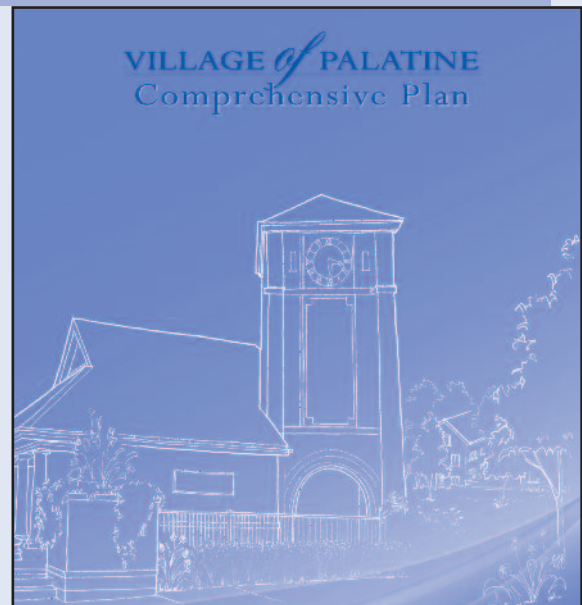
- Maintain the low-density, suburban residential character of the community.
- Encourage continued managed growth of the Village.

Housing

- Encourage development of single-family homes in many price ranges as the primary form of new residential development.
- Ensure the quality of new multiple-family developments, where such uses are appropriate.
- Encourage development of affordable housing for special populations.
- Encourage development of large, planned parcels rather than small piecemeal development.

Retail, Office and Light Industrial Development

- Encourage new office, research, and light industrial development in the Village to help increase the tax base.
- Achieve better control over the quality of new and redeveloping commercial areas.



Transportation

- Improve traffic circulation in Palatine.
- Improve accessibility within the Village for special populations.

Community Appearance

- Improve the appearance and quality of both existing and new retail/commercial development.

Open Space and Environmental Planning

- Maintain sufficient parks and open space to serve all Palatine residents.
- Ensure that new development is respectful of environmentally sensitive areas.

Utilities

- Provide water, sanitary and storm sewer facilities to all residents of Palatine.

Plan and Process Moving Forward

This process will rely heavily upon public input and the Plan will reflect the overall community objectives gathered from the residents and business owners. A Community Survey will be accessible through the Village's website (www.palatine.il.us) in October 2009.

We encourage all residents to visit the Comprehensive Plan Update website for project information, schedule, and Comprehensive Plan documents for further information. Please visit Channel 6 and the Village website for continuing updates and details regarding the Comprehensive Plan Update.

For additional information, please contact the Village of Palatine Department of Planning and Zoning at (847) 359-9047.

Village of Palatine

N E W S L E T T E R

The Village of Palatine

200 E. Wood Street, Palatine, Illinois 60067

Village Hall: (847) 358-7500

Village Action Line : (847) 705-5200

E-mail: village@palatine.il.us

Home page: www.palatine.il.us

Jim Schwantz, Mayor

(847) 359-9007; jschwantz@palatine.il.us

Margaret R. Duer, Village Clerk

(847) 359-9051; mduer@palatine.il.us

Aaron Del Mar, District 1

(847) 894-0001; adelmar@palatine.il.us

Scott Lamerand, District 2

(847) 894-0002; slamerand@palatine.il.us

Daniel A. Varroney, District 3

(847) 359-6479; dvarroney@palatine.il.us

Greg Solberg, District 4

(847) 358-0531; gsolberg@palatine.il.us

Jack Wagner, District 5

(847) 358-3766; jwagner@palatine.il.us

Brad Helms, District 6

(847) 894-0006; bhelms@palatine.il.us

Reid Ottesen, Village Manager

(847) 359-9031; rottesen@palatine.il.us

Kaye Lowman Boorum, Newsletter Editor

Presorted
Standard
U.S. Postage
PAID
Permit No. 2855
Palatine Illinois

*****ECRWSS**

POSTAL CUSTOMER
Palatine, Illinois

Palatine Sister Cities Members

Walking for World Peace October 24

Sister Cities International in Washington D.C. announced its first annual 5K Run/Walk for world peace Saturday, October 24, 2009, and invited every Sister City around the world to participate. Palatine is in!

The point of the event is to raise awareness of Sister Cities' goal to promote peace through understanding. After witnessing the horrors of WWII, Dwight D. Eisenhower initiated the Sister Cities program in 1956, believing that people who know and understand each other, who share culture and exchange ideas, will not wage war.

Eisenhower expressed his "faith in the great promise of Sister City affiliations in helping build the solid structure of world peace." Since then, 1,900 communities have partnerships in 135 countries—all with a single underlying goal: Peace.

The Walk on October 24 will be taking place in many cities around the world, including Palatine. The group will enjoy seeing the older Palatine neighborhoods with a narration in French and in English. The Walk will end at the Farmers' Market in the Metra station parking lot for socializing and refreshments.



Arrangements are being made for webcam connection with Palatine's Sister City, Fontenay-le-Comte, France, as people there will be walking there at the same time we are walking in Palatine.

Fontenay-le-Comte has invited Palatine to celebrate 15 years of friendship next May in Fontenay during their Biennale celebration. If interested in travel to France in May, 2010, or for more information about Palatine Sister Cities, call Pierre at (847) 991-6341.