



# VILLAGE *of* PALATINE



FALL 2012

## *In this* ISSUE

Electric Bills Stay Low Even in Record Heat.....	2
2012 Hometown Pride Winners .....	3
Upcoming Events.....	4
Insurance Program, Flood Preparedness Mitigate Flood Issues .....	5
Curbside Leaf Collection .....	6
Trick or Treat Hours.....	7
Holiday Safety Tips .....	8
Winterize Home, Save Energy Dollars .....	10



## FIRE DEPARTMENT TO WELCOME COMMUNITY AT OPEN HOUSE OCT. 6

The Palatine Fire Department places a high priority on public education and will reach out to the community at an open house Saturday, Oct. 6 from 10 a.m. to 2 p.m.

Visitors will experience an interactive display of firefighting in a safe environment, rescue emergency medical services and specialty team skills. The annual event is an opportunity for residents to learn about fire behavior, how to operate a fire extinguisher and even spray water from a fire hose.

Come to Fire Station 84 to meet Palatine firefighters who are all certified paramedics and view equipment and fire and rescue vehicles. Representatives from the Police Department and Palatine Emergency Management also will be

present to answer questions. Refreshments will be served throughout the day.

The Palatine Fire Department is a well-equipped, well-staffed and well-trained community service provider whose number one priority is to save lives and minimize property loss during an emergency. However, knowing and practicing fire prevention skills is the first line of protecting lives. There are a number of different programs the Fire Department participates in throughout the year to serve residents and keep them safe.

For any questions regarding fire safety or to schedule a program, call the Fire Department Administration office, 202-6340.

## OPEN HOUSE SCHEDULE Fire Station 84, 220 W. Illinois Ave.

### 10 a.m. to 2 p.m.

Tours and Displays  
Public Education Vehicle Display  
Fire Extinguisher Operation  
Vehicle Extrication Demonstration

### 10 a.m.

Flight for Life Helicopter  
*if available*

### Noon

Mr. Wizard Fire  
Behavior Demonstration

### 1 p.m.

Flashover Room Demonstration



# VILLAGE OF PALATINE

200 E. Wood St.  
Palatine, IL 60067

[www.palatine.il.us](http://www.palatine.il.us)  
[village@palatine.il.us](mailto:village@palatine.il.us)

**VILLAGE HALL HOURS**  
8 a.m. to 5 p.m.,  
Monday through Friday

## VILLAGE PHONE NUMBERS

Emergency .....911  
Village Hall.....358-7500  
TDD (Emergency) .....911  
TDD (Non-Emergency) .....359-9000  
Village Action Line .....705-5200  
Community Services .....359-9042  
Fire (Non-Emergency).....202-6340  
Police (Non-Emergency) ....359-9000  
Public Works .....705-5200

### Mayor

Jim Schwantz .....359-9007  
[jschwantz@palatine.il.us](mailto:jschwantz@palatine.il.us)

### Village Clerk

Margaret R. Duer .....359-9051  
[mduer@palatine.il.us](mailto:mduer@palatine.il.us)

### District 1

Aaron B. Del Mar .....894-0001  
[adelmar@palatine.il.us](mailto:adelmar@palatine.il.us)

### District 2

Scott Lamerand .....894-0002  
[slamerand@palatine.il.us](mailto:slamerand@palatine.il.us)

### District 3

Jim Clegg .....894-0003  
[jclegg@palatine.il.us](mailto:jclegg@palatine.il.us)

### District 4

Greg Solberg .....894-0004  
[gsolberg@palatine.il.us](mailto:gsolberg@palatine.il.us)

### District 5

Kollin Kozlowski .....894-0005  
[kkozlowski@palatine.il.us](mailto:kkozlowski@palatine.il.us)

### District 6

Brad Helms .....894-0006  
[bhelms@palatine.il.us](mailto:bhelms@palatine.il.us)

### Village Manager

Reid Ottesen .....359-9031  
[rottesen@palatine.il.us](mailto:rottesen@palatine.il.us)

*All phone numbers are (847) area code  
unless otherwise noted.*

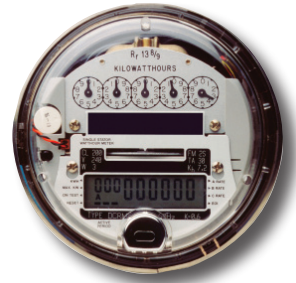


## ELECTRIC BILLS STAY LOW EVEN IN RECORD HEAT

After a blistering summer with temperatures exceeding 100 degrees on several days, Palatine residents and small businesses were still able to save money on their electric bills by participating in the Palatine Electric Aggregation Program which began in July. In less than two months, Palatine residents have saved over \$1 million in electrical supply services compared to the standard Commonwealth Edison rate.

Integrus Energy Services supplies electricity while Commonwealth Edison continues to provide service, delivery and billing. Residents and small businesses that opted out or have an expiring existing contract may participate in the program by contacting Integrus Energy Services, 877-585-3431.

To learn more, visit [www.integrusenergy.com/il-palatine](http://www.integrusenergy.com/il-palatine).



## 2013 WASTE COLLECTION SCHEDULES

### HOLIDAYS

Mark your calendar for these holidays that will affect your solid waste collection. For those holidays not listed, solid waste collection will take place as regularly scheduled. Save and post this handy schedule for reference throughout the year and save yourself from hauling the trash to the curb a day early or missing your collection entirely for the week.

Week of	Holiday	Collection
December 31, 2012	New Year's Day	Tues./Wed. one day later
May 27	Memorial Day	all one day later
September 2	Labor Day	all one day later
December 25	Christmas	Wed. one day later

### CURBSIDE YARD WASTE

Curbside yard waste collection ends the week of December 3, 2012 and resumes April 1, 2013 through December 4, 2013.

To rent a garbage cart for an annual fee of \$30 or to upgrade the size of a recycling cart at no cost, contact Groot Industries, Inc., 800-244-1977.

For more information, contact the Environmental Health Division, 359-9090.

## PalatinE-News

Sign up to receive the latest information on community events, news and alerts at [www.palatine.il.us](http://www.palatine.il.us).

# HOMETOWN PRIDE WINNERS SURVIVE DROUGHT, BEAUTIFY VILLAGE

It is not an easy task to maintain an award-winning landscape during a drought, but these residents and organizations have nurtured an endless array of manicured flowers, shrubs and trees. The Beautification Commission has recognized the following entrants with the 2012 Hometown Pride Award.



## Single-Family

- 1st place: Clifton and Cindy Haslop, 1501 Pendleton Ct.
- 2nd place: Darlene Napolitano, 1045 W. Yale Ct.
- 3rd place: Anthony and Carol Molinaro, 1153 Old Mill Rd.

## Multi-Family

- 1st place: Rich Scalzo – 162 S. Stonington Dr.
- 2nd place: The Garden Committee, Willow Creek Condominiums  
945 E. Kenilworth Ave., Building #4

## Entrance/Cul-de-sac Island

Bridge View West, Homeowners Association

For a complete list of entries and to view the photo gallery, visit [www.palatine.il.us](http://www.palatine.il.us).  
Search: hometown pride award.

# PEDESTRIAN SAFETY VILLAGE PRIORITY

Traffic signals typically provide enough flashing DON'T WALK time for a person to cross the street at a walking pace of four feet per second or more. In some cases it may be best for pedestrians to wait for the next green light and WALK signal before crossing just to be safe.

The following are some helpful reminders:

Pedestrians must be diligent about watching the crosswalk signal and following the WALK and DON'T WALK instructions.

Pedestrians should use crosswalks when available and look both ways when entering the crosswalk.

Pedestrians should wear light colored or reflective clothing when going out for a walk after dark.

Drivers should look both ways before driving through a crosswalk.

Drivers stopping for a traffic signal or stop sign should stop before the crosswalk pavement marking.



# RELOCATED BUSINESSES

**All Family Plumbing**  
863 S. Vermont St.  
963-6900  
Plumbing

**Ariainsure Inc.**  
1590 N. Rand Rd., #201  
358-1800  
Insurance Sales

**CMI Creative  
Mechanix**  
251 N. Eric Dr.  
991-9150  
Auto Repair



**Mane Street  
Hairstyling**  
4 N. Bothwell St.  
358-3477  
Hair Salon

# NEW BUSINESSES

**AUTOMOBILE**  
**Al's Auto Center Inc.**  
544 W. Colfax St., Ste. 1  
496-4912  
Auto Repair

**American  
Classic Rides LLC**  
511 S. Vermont St.  
866-881-8214  
Car Storage/  
Membership Program

**Hi Auto Sales Inc.**  
2161 N. Rand Rd.  
907-9023  
Auto Sales

**Jem Tops Inc.**  
2293 N. Rand Rd.  
359-7660  
Truck Accessories

**Pep Boys Auto  
Service & Tires**  
315 W. Northwest Hwy., B  
359-3007  
Auto Repair/Tire

**BANKING/  
FINANCIAL**  
**PNC Bank**  
515 N. Hicks Rd.  
991-7401  
Banking

**Liquid Capital  
of Illinois**  
579 N. First Bank Dr.  
Ste. 200  
842-3300  
Finance Company

**Sims Metal  
Management**  
630 N. North Ct., #140  
773-230-6090  
Broker/Trader

**CONTRACTORS**  
**Axiom  
Construction Inc.**  
500 S. Hicks Rd.  
259-3350  
General Contractor

**DER LLC**  
515 S. Vermont St., A  
Masonry/Tuckpointing

**Toll Brothers**  
630 N. North Ct., #180  
590-5100  
Builder/Office

**BEAUTY**  
**Maria's Skin Care**  
208 W. Northwest Hwy.  
#107  
224-5570  
Skin Care

**Serenity Spa**  
19 E. Northwest Hwy.  
Ste. 3A  
991-6868  
Aesthetics/Skin Care

**RETAIL/  
RESTAURANTS**  
**American Home  
Finance Inc.**  
830 W. Northwest Hwy.  
Ste. 12  
705-1940  
Jewelry/Gold Buying Store

**Boost Mobile**  
1276 E. Dundee Rd.  
485-8001  
Cellphone/Sales/Repair

**Garcia Boots  
Western Wear**  
1709 N. Rand Rd., #200  
224-200-7189  
Western Wear

**La Michoacana**  
1645 N. Baldwin Rd.  
Ice Cream Shop

**Mac's On Slade**  
117 W. Slade St., #108  
907-9621  
Restaurant/Tavern

**Natural Line**  
213 W. Dundee Rd.  
630-570-1336  
Medical Supplies

**SERVICES**  
**Art Tek Dental Lab Co.**  
350 N. Eric Dr., #102  
877-0499  
Dental Lab

**AVI Electronics Corp.**  
350 N. Eric Dr., #103  
312-450-7788  
Computer Repair

**Boom Enterprises LLC**  
1540 E. Dundee Rd., #320  
907-9660  
Office

**Dimensions**  
271 E. Helen Rd.  
774-4941  
Printing/Sales

**Elki M Weinbrenner**  
444 N. Wilke Rd., #101  
496-0650  
Internet Sales/Purses

**Express Tax**  
1858 N. Rand Rd.  
934-7790  
Tax Service

**Foran Financial Inc**  
1709 N. Rand Rd., #100  
537-6688  
Trucking Insurance

**Megleos School  
of Dance**  
39 S. Northwest Hwy.  
577-6106  
Dance Studio

**Profund Systems Inc.**  
1540 E. Dundee Rd., #215  
496-7477  
Software Systems

**Smash PC**  
835 N. Sterling Ave., #225  
238-2111  
Computer Repair

**Sunshine Cleaner  
One Hour LLC**  
1623 N. Rand Rd.  
359-9108  
Cleaners

**Swirls of Sweetness**  
137 N. Wilke Rd.  
773-322-5479  
Wedding & Party Favors

**Team Store**  
734 S. Vermont St., #2  
991-4010  
Promotional  
Products Distributor

(847) area code unless otherwise noted.

[www.palatine.il.us](http://www.palatine.il.us)



## GENERAL ELECTION VOTING OPPORTUNITIES

The last day of voter registration for the November 6 general election is Tuesday, Oct. 9. Residents may register anywhere in Illinois that offers voter registration. Registrants must provide two pieces of identification (one with a current address). Photo IDs are not required. To verify registration or view a sample ballot, visit [www.cookcountyclerk.com](http://www.cookcountyclerk.com).



### GRACE PERIOD REGISTRATION AND VOTING

- Wednesday, Oct. 10 through Saturday, Nov. 3.
- Only at Cook County Downtown Office – 69 W. Washington St., 5th Floor and suburban courthouses.

### EARLY VOTING

- Monday, Oct. 22 through Saturday, Nov. 3.
- For a list of early voting sites and hours, visit [www.cookcountyclerk.com](http://www.cookcountyclerk.com)

### VOTING BY MAIL

- Download a Mail Ballot Application at [www.cookcountyclerk.com](http://www.cookcountyclerk.com) or stop by Village Hall (Village Clerk's Office).

### IN-PERSON ABSENTEE VOTING

- Sunday, Nov. 4 and Monday, Nov. 5
- Only at Cook County Downtown Office – 69 W. Washington St., 5th Floor and suburban courthouses.

For more information, visit [www.palatine.il.us](http://www.palatine.il.us) or call the Village Clerk's Office, 359-9051.

## 2012 UPCOMING EVENTS

**Now  
10/27**

**Farmers' Market**  
Now to October 27  
Saturdays, 7 a.m. to 1 p.m.  
Visit the 21st season of the Palatine Farmers' Market. Local musicians will entertain from 10 a.m. to 1 p.m. located in the train station parking lot at Wood and Smith Streets. For updated information, visit [www.palatine.il.us](http://www.palatine.il.us).



**9/15**

**Scarecrows on Parade**  
Saturday, September 15  
Village of Palatine, the Palatine Beautification Commission and Palatine Home Depot will sponsor a community scarecrow decorating contest and display. The annual event is open to any Palatine business, organization, association, family or individual. For information, visit [www.palatine.il.us](http://www.palatine.il.us), click on scarecrows parade icon.

**10/6**

**Fire Department Open House**  
Saturday, 10 a.m. to 2 p.m.  
Fire Station 84  
220 W. Illinois Ave.  
Take this opportunity to meet firefighters, tour the station and view fire and rescue vehicles and equipment. Refreshments will be served. For more information, visit [www.palatine.il.us](http://www.palatine.il.us). Search: fire department open house.



**10/27**

**Halloween at Farmers' Market**  
Saturday, 10 a.m. to 1 p.m.  
Everyone is invited to come to the Farmers' Market in costume and to participate in traditional games and trick or treat at each booth at the train station.



**10/31**

**Halloween**  
Wednesday, October 31  
3 to 7 p.m.  
Homeowners and businesses are encouraged to make trick or treat hours a safe and enjoyable event for all Palatine children.

**11/4**

**Change the Clock, Change the Batteries**  
Sunday, 2 a.m.  
Remember to "fall" back one hour. The Palatine Fire Department supports the Change the Clock, Change the Batteries theme followed by more than 6,200 fire departments nationwide. Replace the batteries in all smoke detectors and carbon monoxide detectors.



**11/17**

**Annual Tree Lighting**  
Saturday, November 17  
5 p.m.  
Help Santa and Mayor Schwantz light the holiday tree on Saturday, Nov. 17 in the Towne Square at Smith Street and Palatine Road. Submit a one page letter about the importance of the holiday season. Letters should be submitted to "Tree Lighting, Village of Palatine, 200 E. Wood St., Palatine, IL 60067" no later than Nov. 1. For more information, visit [www.palatine.il.us](http://www.palatine.il.us). Search: treelighting.



**11/16  
to  
11/17**

**Downtown Merchants Open House**  
Friday, November 16 and Saturday, November 17  
The Downtown Palatine Business Association will host its annual Holiday Open House. For more information, visit [www.downtownpalatine.org](http://www.downtownpalatine.org).

# INSURANCE PROGRAM, PREPAREDNESS MITIGATE FLOOD ISSUES

Flooding can happen at any time especially with a heavy deluge of rain. Most homeowners' policies do not cover losses due to flooding. However, since Palatine is a participant in the National Flood Insurance Program, flood insurance is available to all property owners or renters.

Coverage can be obtained on the building as well as on the contents. The policy does not cover the contents of finished basements or improvements such as finished walls, floors and ceilings.

Property owners are eligible for up to a 15 percent discount on the flood insurance premiums due to the Village's participation in Community Rating System. There is a 30-day waiting period after the purchase of the premium. Residents should contact their insurance agent for more information, or call the NFIP toll-free number at 1-800-611-6123, ext. 29.

## Flood Preparedness

Floods always occur at the most inconvenient times and with very little warning. But there are many things that residents can do to prepare for a flood.

- Prepare a list of emergency phone numbers that can be easily accessed during a flood event. Keep backup records at another location such as at work or a friend's house.
- Keep an inventory of personal property that can be used to identify what has been damaged and lost during a flood. Photographs or a video record of each room can be helpful.
- Keep photographs of valuable items such as insurance policies, vehicle titles, deeds, bank and credit card account information, wills and important telephone numbers in a location away from your home such as a safe deposit box.
- Talk to an insurance agent about protection against floods and sewer backups.
- Keep cleaning supplies on hand necessary to recover from a flood.

## Flood-proofing

There are many successful methods to protect a building from flood damage. These retrofitting measures that alter a building to eliminate or reduce flood damages include:

- **Elevation**—this involves raising the house so that the lowest floor is above the flood protection level.
- **Relocation**—moving a building out of the flood area is the surest way to protect it from a flood.
- **Floodwalls**—they work to keep water from reaching a home by constructing barriers out of fill or concrete between the building and the flood water.
- **Dry Flood-proofing**—makes the building walls and floor watertight so water does not enter.
- **Wet Flood-proofing**—modifies the structure and relocates the contents so that when flood water enters the building there is little or no damage.

Any alteration to a building or land requires a permit, even re-grading or filling the floodplain. Contact the Village Engineer at 359-9045 to discuss any flood-proofing plans.



# PARKING OVER SIDEWALK HINDERS PEDESTRIANS

During a busy day, residents sometimes forget that little things matter. In this case, Village sidewalks. Please be considerate of neighbors, children, dog walkers, bicyclists and any other traveler who wishes to use the public sidewalk.

Parking a vehicle over a sidewalk can be a hazard to those who use it daily. Parking over a sidewalk forces pedestrians to walk or ride their bike out into the street to maneuver around the vehicle. This can be dangerous due to

oncoming traffic. While many families have numerous vehicles and not enough parking space, it is still important to keep sidewalks clear to comply with Village code and avoid a \$30 fine.

The ordinance prohibits vehicles from blocking the use of a sidewalk between the hours of 7a.m. to 10 p.m.

Please obey this ordinance to respect the rights of pedestrians and to avoid the possibility of a ticket in the future.



# CURBSIDE LEAF COLLECTIONS WILL BEGIN BY ZONE OCT. 8

There will be three leaf collections scheduled between Monday, Oct. 8 and Monday, Nov. 19 for each residence. All raked leaves must be put into the street and ready for pick up by 7 a.m. on scheduled days, but NO EARLIER than 4 p.m. the day before the collection.

There is only one pass down a street during scheduled collection days. The large volume of leaves makes it impossible for trucks to return a second time.

Leaf collection is a two-step process.

Crews collect leaves with a leaf machine.

Next the sweeper does a final cleanup of leaf debris.

Street cleanup takes longer than leaf pick up due to the slow pace of the machine.

Refer to the map and schedule to determine your zone and three-day schedule.

## Zone Day/Date

1	Mon., Oct. 8
	Mon., Oct. 22
	Mon., Nov. 5
2	Tues., Oct. 9
	Tues., Oct. 23
	Tues., Nov. 6
3	Wed., Oct. 10
	Wed., Oct. 24
	Wed., Nov. 7
4	Thurs., Oct. 11
	Thurs., Oct. 25
	Thurs., Nov. 8
5	Mon., Oct. 15
	Mon., Oct. 29
	Tues., Nov. 13
6	Tues., Oct. 16
	Tues., Oct. 30
	Wed., Nov. 14
7	Wed., Oct. 17
	Wed., Oct. 31
	Thurs., Nov. 15
8	Thurs., Oct. 18
	Thurs., Nov. 1
	Fri., Nov. 16

## ALL ZONES

Mon., Nov. 19



Public Works has scheduled the week of November 19 as the final leaf pick up opportunity for all Village residences. All zones **MUST** have the final collection of leaves out on the street, on Monday Nov. 19 by 7 a.m. Crews will start the final pick up on Monday and continue throughout the week until all the leaves have been collected.

For more information, contact Public Works, 705-5200, Monday through Friday from 8 a.m. to 4 p.m. or visit [www.palatine.il.us](http://www.palatine.il.us). Search: leaf collection.





## Important Reminders

- Parking over a pile of leaves can create a fire hazard—a warm car may ignite leaves underneath it.
- Please do not park on the street during pick up days. Vehicles block the curb for equipment.
- Please do not rake leaves around the edges of cul-de-sac islands. Rake them to the residential curbside.
- Please clean the neighborhood storm sewer inlets to help prevent flooding during rain. Rake leaves into the street about 12 inches from the curb to allow for drainage.
- Please rake leaves into the street on the pavement. Leaves raked just over the curb or on the parkway cannot be picked up. Streets without curbs should have leaves piled as close to the shoulder of the road as possible without hindering vehicular traffic.
- Please do not include non-leaf material (grass clippings, branches, etc.) during the leaf collection to prevent equipment and safety issues. Piles with any other debris will be left at the curb.



## In Case of Snow

An early snowfall seriously hampers leaf collection efforts. Leaves raked to the curb most likely will be plowed back onto the parkway. Public Works will make every attempt to collect leaves raked back into the street.

## Timing Is Everything

Please do not rake leaves too early. Leaves left accumulating for several days before the scheduled pick up may be carried by wind or rain down the curb line and block storm sewer inlets. The backup may flood yards and basements.

Please be patient if crews run behind schedule. Weather, equipment problems and the amount of leaves may slow down the collection process, but crews will be there to pick up the leaves.

## Bag Those Leaves For Pick Up Option

Residents have the option to collect fallen leaves in yard waste bags and place them curbside for household refuse pick up. This flexible option works well for those who do not want to be committed to the scheduled leaf collection program.

Final scheduled pick up for curbside yard waste and bundled brush will be the week of December 3. It is possible that Groot may conduct additional curbside collections in December. Information will be posted on the Village website and Palatine television, Xfinity channel 6 and AT&T U-Verse channel 99.

## Winter Curbside Brush Pick Up Scheduled for February

A curbside brush pick up will occur **ONLY ONCE** during the winter season beginning the first Monday in February at 7 a.m. Please have all loose brush at the curb.

### Guidelines

- Brush must be eight inches or less in diameter to accommodate the chipper.
- Firewood or tree stumps are not accepted because of the potential damage to the chipper.
- Cut ends must face the curb with branches as long as possible.

Crews will pass through the Village just once. Be patient. If amounts of brush are excessive, the project may take all week to finish.



## Village Trick or Treat Hours 3 to 7 p.m. Wed. Oct. 31

Village Trick or Treat hours will be held 3 to 7 p.m. on Wednesday, Oct. 31. Keep neighborhood ghosts and goblins safe:

- Go trick or treating with an adult.
- Stick to the designated trick or treat time. Stay in areas with many homes.
- Plan a safe route so you know where your children are at all times. Set a time for their return home.
- Stay together as a group. Be sure to let your parents know who you are with and where you are going.
- Do not eat any treats until they can be examined at home by an adult.
- Never enter a home, back or side yard of a stranger or get into a stranger's car. Call 9-1-1 or go to a neighbor's house for help.
- Carry a flashlight, glow stick or have reflective tape on costumes to make them more visible to cars.
- Make sure costumes are flame retardant or have been treated with fire retardant spray.
- Avoid masks. They limit vision. Use make-up instead.

Remember to make Halloween a safe experience by keeping the house well lit and inviting and securing pets.

Damaging cars or houses is a crime. The police will arrest those who think that such behavior is "Halloween" fun.

# HOLIDAY REMINDERS

## SHOPPING SAFETY

Holiday shoppers make perfect targets for burglars and thieves. Shoppers may be distracted by children, in a rush to get home, texting or talking on a cell phone or digging for keys. Holiday shoppers are usually oblivious of the surroundings and potentially unsafe situations.

The Palatine Crime Prevention Unit recommends these tips to encourage safety awareness during the holiday shopping season.

- Shop during daylight hours whenever possible or go with a friend at night.
- Dress casually and avoid wearing expensive jewelry.
- Do not carry a purse or wallet.
- Always carry a driver's license or identification card along with necessary cash, checks and/or a credit card.
- Stay alert to the surroundings.
- Avoid carrying large amounts of cash. Pay for purchases with a credit card or keep cash in front pockets.
- Notify the credit card issuer immediately if a credit card is lost, stolen or misused. Keep a record of all credit card numbers in a safe place.
- Be extra careful if carrying a wallet or purse. They are the prime targets of criminals in crowded areas.
- Avoid being overloaded with packages. It is important to have clear visibility and freedom of motion to avoid mishaps.
- Always beware of approaching strangers.



## CHRISTMAS TREE SAFETY TIPS

As residents deck the halls this holiday season, they should be fire smart. Each year, fire departments respond to an average of 210 structure fires caused by Christmas trees. Carefully decorating these trees can help make holidays safer.

### Selection

- Be sure artificial trees are labeled, certified, or identified as fire retardant.
- Choose a real tree with fresh, green needles that do not fall off when touched.



### Placement

- Cut 1–2" from the base of the trunk before placing the tree in the stand.
- Make sure the tree is at least three feet away from any heat source.
- Ensure tree is not blocking an exit.
- Add water to the tree stand daily.

### Lighting

- Use lights labeled by an independent testing laboratory. Some lights are only for indoor or outdoor use, but not both.
- Replace any string of lights with worn or broken cords or loose bulb connections. Connect no more than three strands of mini string sets and a maximum of 50 bulbs for screw-in bulbs. Read manufacturer's instructions for number of LED strands to connect.
- Never use lit candles to decorate the tree.
- Always turn off Christmas tree lights before leaving home or going to bed.

### After Christmas

- Dispose of the tree when it begins dropping needles. Dried-out trees are a fire danger and should not be left in the home or garage, or placed outside against the home.

- Bring outdoor electrical lights inside after the holidays to avoid hazards.

## CANDLE SAFETY

Candles are safe products, but unless they are used safely and watched carefully, they can lead to an accidental fire. More than 15,000 candle fires are reported annually.

Follow these rules for burning candles safely.

- Keep a burning candle in sight.
- Keep candles out of the reach of children and pets.
- Trim candlewicks to ¼ inch each time before burning.
- Always use a candleholder specifically designed for candle use.
- Be sure the candleholder is placed on a stable, heat-resistant surface.
- Keep the wax pool free of wick trimmings and debris.
- Keep burning candles away from drafts.
- Always burn candles in a well-ventilated room.
- Don't burn a candle all the way down or move when the wax is liquid.
- Never use a knife or sharp object to remove wax drippings from a glass holder.
- Place burning candles at least three inches apart.
- Use a candle snuffer to extinguish a candle, never water.
- Don't use candles during a power outage.
- Always make sure a candle is completely extinguished.
- Extinguish a candle if it smokes, flickers repeatedly, or the flame becomes too high.
- Never use a candle as a night light.





# FOLLOW FOOD SAFETY TIPS TO BRIGHTEN HOLIDAY PARTY SCENE

Fancy dips, tempting hors d'oeuvres and delightful desserts are some of the culinary treats offered at holiday dinners, office parties or other celebrations. However, those get-togethers may result in foodborne illness if safe preparation is lacking. The U.S. Centers for Disease Control and Prevention (CDC) estimates that each year roughly one in six Americans (or 48 million people) gets sick, 128,000 are hospitalized and 3,000 die of foodborne diseases. In Illinois, it is estimated that as many as 250,000 cases of foodborne illness may occur each year. However, because these illnesses can be mild and occur at home, many cases go unreported.



Holiday hosts can avoid foodborne illnesses by following the safe food preparation guidelines.

## **Keep everything in the kitchen clean.**

Wash counter tops and utensils with hot, soapy water between each step in food preparation. Bacteria from raw meat and poultry can get into other foods if they touch the same surfaces or each other.

## **Wash hands often during food preparation and while serving.**

Most bacteria get into food through improper handling. Always wash hands with soap and warm water before handling food. Bacteria can linger in towels and wash cloths used repeatedly; wash linens frequently.

## **Keep hot food hot and cold food cold.**

Cooking food thoroughly kills most bacteria that cause food poisoning. Cook meat and poultry

thoroughly and use a meat thermometer to check the temperature. Keep hot food at 140°F and above and store and serve cold foods at or below 40°F. Do not leave food unrefrigerated longer than one hour at a time or the chances of dangerous bacterial growth increase. In other words, do not let potentially hazardous foods reach an intermediate temperature between 40°F and 140°F when micro-organisms grow best.

Symptoms of foodborne illnesses can appear anywhere from 30 minutes to two weeks after eating contaminated food. Most often, people get sick within 4 to 48 hours after eating contaminated food.

Some foodborne illnesses will resolve themselves without treatment. However, if the symptoms are severe or if the person is very young, old, pregnant or already ill, call a doctor or go to a nearby hospital immediately.

When a foodborne illness is suspected, contact the Cook County Department of Public Health, 708-633-8030. For further information on food safety, contact the Palatine Environmental Health Division, 359-9090.

*Source: Illinois Department of Public Health*



## **Clean Fireplace, Chimney for Safe Winter Warmth**

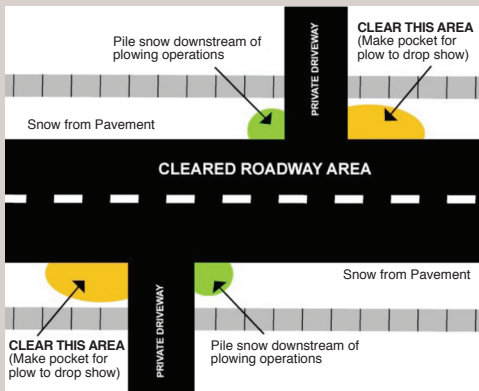
Gathering around a fireplace can be a warm, cozy and even romantic experience. However, as quick as a spark, the ambiance can turn deadly and destroy a home, personal belongings and even lives! Consider these fireplace safety tips and rules:

- Service the fireplace and chimney annually by a certified chimney sweep.
- Burn only hard woods such as oak, maple or hickory. Soft woods such as pine, lumber scraps, etc., leave soot and combustibles on the chimney lining which may cause a fire.
- Never use a flammable or combustible liquid to start or accelerate a fire.
- Secure screen or glass door covers at the opening to deter sparks from the fire box.
- Be certain that the fireplace assembly is in good structural condition.
- Clean ashes out of firebox prior to use, making sure there are no hidden embers.
- Use only metal containers with a properly fitted lid to store the ashes.
- Dispose of cold ashes correctly.
- Be sure the damper is operating correctly.
- Keep the glass fireplace doors open while the fire is burning. Allow the fire to extinguish before closing the doors.
- Install only recommended doors on pre-fabricated fireplaces. Many fires have resulted from improper installation.
- ALWAYS BE CAREFUL!

For more information, visit [www.palatine.il.us](http://www.palatine.il.us). Search: fireplace safety.

[www.palatine.il.us](http://www.palatine.il.us)





## Wintertime Parking, Plowing & More...

The Village will be prepared for any climate with snow plowing crews ready 24/7 to keep the roadways safe for travel. Here are important snow season reminders for residents:

- \* Keep parked cars off of the street while snow removal operations are in progress. On-street parking is not permitted after a snowfall of two or more inches until the street has been plowed. Illegally parked cars will be ticketed and towed.
- \* Remove all landscaping obstructions such as boulders, stones and tree limbs from the parkway. Such items pose safety hazards for snow plowing crews.
- \* While crews always do their best to protect lawn areas and mailboxes adjacent to the roadway, please report any damage within 24 hours so Public Works can investigate and make repairs.
- \* Never shovel or plow snow from the driveway into the street. Snow from driveways can become compacted and icy, posing a significant danger to both vehicles and pedestrians.
- \* Snow plows are designed to push snow to the outside edge of the road, leaving snow at the bottom of your driveway. Save time and frustration—wait to clear the bottom of the driveway until the plow's final pass.

# WINTERIZE HOME, SAVE ENERGY DOLLARS

The kids are back to school and adults are digging out the heavy coats and gloves from the closet—all signs that winter is on the way. It also means it's time to prepare homes for the colder weather. The following tips will not only help protect the home from the elements, but also provide energy savings.

**Clean the gutters.** After the leaves fall, it's time to clean gutters. Clogged gutters and downspouts can form ice dams. These can cause water to back up and seep into the house.

**Landscaping and Other Outdoor Areas.** Trim trees with branches that hang too close to the house or electrical wires. Rake away all debris and vegetation from the foundation. Clean and seal driveways, brick patios and wood decks.



**Inspect the Exterior, Doors and Windows.** Inspect the exterior for cracks, openings and other points where air, water or pests can gain access. Weather-strip around doors and caulk around windows and other wall penetrations to prevent cold air from entering the home. Switch out summer screens with storm windows if available.

**Furnace Inspection.** Call an HVAC professional to inspect and clean the furnace. Have extra furnace filters on hand and change them monthly. Consider setting the thermostat no higher than 68 degrees when you are home and lower the temperature at bedtime or when the home is not occupied.

## Prevent Plumbing Freezes.

Disconnect all garden hoses from exterior hose bibbs and drain them before storing them for winter. If you do not have frost proof hose bibbs, be sure to shut off their water supply in the house and drain the line. While on vacation, leave the heat on, set to at least 55 degrees. Locate the water main shutoff valve in the event you need to shut it off in an emergency.

**Fireplaces.** If the chimney hasn't been cleaned for a while, call a chimney sweep to inspect and clean the chimney/fireplace. Installing a chimney cap or screen helps to keep out rodents and birds. Store firewood in a dry place away from the exterior of a home. Many older wood burning fireplaces are inefficient and draw heat out. Consider installing a fireplace insert to make the fireplace energy efficient. Close the flue to eliminate drafts when not in use.

**Ceiling Fans.** Most ceiling fans have a switch that allows you to reverse the rotation. Reversing the direction of the ceiling fan will push warm air downward and force it to recirculate thereby making the room more comfortable.

**Insulate.** Adding insulation can be a terrific way to lower home heating/cooling costs. Insulate the attic to an R-value of 38 for a gas heated home and 50 for an electrical heated home. Insulate the sill box (upper portion of the basement walls) to an R-value of 10.





# WATER QUALITY TRICKLES DOWN TO INDIVIDUAL USE

Water might be called the most recycled resource. The water everyone drinks today contains the same water molecules that flowed in the Nile during the building of the Egyptian pyramids and froze in glaciers when mastodons roamed the earth. Distribution of the earth's total water supply changes in time and space, but the quantity remains constant.

It used to be that no one really thought much about water. It came out of the faucet, went down the drain and that was the end of that. Go fishing or swimming in the local stream, swimming hole or maybe even Lake Michigan. Nothing to worry about—there was clean water to spare.

Today there are plenty of reasons to worry about water and water quality. We expect to have crystal-clear, pure water for drinking, food production and recreation AT THE SAME TIME we use our waters for waste disposal. The old slogan, "the solution to pollution is dilution" typified the feeling that anything dumped down a drain, into a river or even into the ocean was going to disappear without a trace. We now know that NO aquatic system can absorb unlimited human pollution.

Protecting water quality is much more complicated than simply ordering a factory or sewage treatment plant to stop discharging pollutants. Other types of water pollution

categorized as nonpoint source pollution or polluted runoff are the NUMBER ONE threat to water quality.

These pollutants fall from the sky, wash from the land during rain storms, travel across the state in streams and rivers, and even get dumped into storm drains or directly into the water by the thousands of individuals who don't realize that what they are doing causes water pollution.

Through everyday activities everyone causes water pollution. The exhaust and oil from driving cars, materials washed down drains or flushed down the toilet, pet waste, fertilizers and pesticides used in yards, all contribute to water pollution.

Simple changes can help reduce some types of pollution. Conserving water both saves money and helps septic systems or local sewage treatment plants remove pollutants more effectively. Choosing non-toxic alternatives for household cleaning products reduces water pollution and exposure to hazardous materials. Rethinking landscaping and gardening practices reduces the need for pesticides, fertilizer and irrigation.

Please take time to protect the most recycled resource for generations to come—clean water. To report possible illegal discharges to the storm drain system, call the Public Works Department, 705-5200.



## Register Bicycles Online

Each year, somewhere between 800,000 and two million bicycles—worth some \$50 million—are stolen. It's difficult to determine the precise number of stolen bikes, because most bike theft is never reported to law enforcement. Even though 48 percent of stolen bikes are recovered by law enforcement, only 5 percent of stolen bikes are returned to their owners.

Residents can protect their bike and increase chances of recovering their bike if it is stolen by registering with the Village online. Just visit [www.palatine.il.us](http://www.palatine.il.us) and search: bicycle registration.

## AUTUMN FARMERS' MARKET OFFERS BOUNTY OF PRODUCE, SERVICES

As fall approaches, the Palatine Farmers' Market offers a bounty of ripe peaches, nectarines, apples, crisp lettuce varieties, tomatoes and squash—most grown organically by local farmers.

Farmers' Market plays a key role in supporting the sustainability of local and regional family farms, revitalizing the downtown, and providing opportunities for farmers and consumers to interact.

Market farmers are nearby (less than 150 miles) guaranteeing consumers fresh, affordable, convenient and healthful products from the farm to the table.

"In addition to all the fresh foods, the market serves as a hub for local information, from lawn and garden advice by University of Illinois Master Gardeners to community event schedules," said Marg Duer, Market Master and Village Clerk.



"It is an outreach source for the Palatine Public Library, Sister Cities Association, Rotary, Kiwanis and Lions clubs, the Audubon Society, the American Cancer Society, Little City and other civic groups," Duer continued. "Residents can even register to vote at the market through October 6."

The market is open every Saturday from 7 a.m. to 1 p.m. through October 27 at the Palatine Train Station.

For more information, visit [www.palatine.il.us](http://www.palatine.il.us). Search: farmers' market.



Village of Palatine  
200 E. Wood St.  
Palatine, IL 60067

PRSR STD  
U.S. Postage  
PAID  
Palatine, IL  
Permit No. 2855

\*\*\*\*\*ECRWSS\*\*  
POSTAL CUSTOMER  
PALATINE, IL

## Village Seeks CDL Drivers For Snow-Plowing Season

If you have experience driving large trucks, hold a valid Illinois Class B commercial driver's license (CDL) with air brakes endorsement, can be available whenever needed and could use some extra money, the Department of Public Works wants you! These positions are temporary and require a high school diploma or equivalent.

Applications are available online at [www.palatine.il.us](http://www.palatine.il.us). Please apply by Oct. 19.

## WINTER MARKET TO DEBUT NOV. 17 AT PALATINE TRAIN STATION

Once a month residents will have an opportunity to shop at the Palatine Winter Market for many food items and services they have come to enjoy at the Farmers' Market. The market, located in and outside the train station at Wood and Smith streets will be open from 8 a.m. to noon.

Merchants will be selling breads and baked goods, organic meats and eggs, spices and olives, pastas and sauces, natural pet treats and much more.

### Save these Saturday dates:

November 17, 2012	February 9, 2013
December 15, 2012	March 9, 2013
January 19, 2013	April 13, 2013

# INTERESTED IN A LAW ENFORCEMENT CAREER?

## The Palatine Police Department Is Now Accepting Applications

The time may be right for you to pursue a career opportunity with the Palatine Police Department. The Police Department offers many challenging career opportunities, including Patrol Officer, Investigations, Crime Prevention, Gang/Tac units, as well as a competitive salary and benefits package.

### APPLICANT MUST MEET THE FOLLOWING REQUIREMENTS:

- Must be between 21 and 34 years of age
- Bachelor's Degree from an accredited 4-year college
- Vision: 20-40 both eyes corrected/uncorrected
- Successfully complete a written exam/physical ability test
- Must pass a psychological test
- Extensive background investigation

Applications are now available at the Palatine Police Department, 595 North Hicks Rd., or on line at [www.palatine.il.us](http://www.palatine.il.us)

### THE APPLICATION DEADLINE IS 4 P.M. FRIDAY, OCT. 19.

The Fire and Police Commission will conduct the written examination on Saturday, Nov. 3, 2012 at 8 a.m., at Palatine High School, 1111 North Rohlwing Rd. The physical ability test will be conducted at 12:30 p.m. the same day at the same location.

*THE VILLAGE OF PALATINE IS AN EQUAL OPPORTUNITY EMPLOYER.*

