

# Village of Palatine

OCTOBER 2008

NEWSLETTER

## In this issue:

Voting information, page 2  
Flood insurance, prevention, page 3  
Breast cancer forum, page 4  
Tree lighting ceremony, page 4  
Sign ordinance meeting, page 5  
Scarecrows on Parade, page 10  
Recycling events, options, page 11



## Bring the Whole Family for Everyone's Favorite Fall Event: The Palatine Fire Department's Open House on October 11!

Bring the cameras and the kids to the Palatine Fire Department's annual open house on Saturday, October 11. The event will run from 10:00 a.m. until 2:00 p.m. at Fire Station 84, located at 220 W. Illinois Avenue.

This family-friendly, interactive event, will feature fire and rescue vehicles and equipment on display, station tours and refreshments. Our Dive Rescue, Hazardous Materials, Technical Rescue and Bike Medic teams will also have their equipment on display.

Fire extinguisher training, vehicle extrication demonstrations, representatives from local hospitals, representatives from the Palatine Police Department and the Palatine Emergency Management Agency (including the Palatine Community Emergency Response Team), the Harper College fire science program and the Palatine Fire Department Public Education Trailer will be present throughout the day.

In addition, there will be a flashover room demonstration, a fire behavior demonstration by "Mr. Wizard," and the Flight For Life helicopter.



### Tentative schedule of events:

Vehicle/Equipment Displays and Station Tours	10:00 a.m.- 2:00 p.m.
Public Education Trailer Display	10:00 a.m.- 2:00 p.m.
Fire Extinguisher Operation	10:00 a.m.- 2:00 p.m.
Vehicle Extrication Demonstration	10:00 a.m.- 2:00 p.m.
Mr. Wizard Fire Behavior Demonstration	11:00 a.m.
Flashover Room Demonstration	12:00 p.m.
Flight For Life Helicopter	1:00 p.m.

## The Emerald Ash Borer Is Coming Ever Closer To Palatine

The Emerald Ash Borer (EAB), which has killed over 75 million trees to date, has been discovered in Cook, DuPage, Kane, McHenry, LaSalle, and Will counties, and most recently in Huntley and Algonquin. While Palatine has not discovered the borer in our Village trees yet, the borer has been confirmed east, west, and south of Palatine.

Signs of a possible EAB Infestation on an ash tree are:

- (1) The borer itself, which is bright, metallic green, one half-inch long and one-eighth of one inch wide with a long flattened back.
- (2) Dieback of the crown of the tree (the top).
- (3) Aggressive growing suckers sprouting from the base of the tree.
- (4) One-eighth inch "D" shaped exit hole in the bark on the trunk and branches or vertical splits in the bark.
- (5) Increased woodpecker activity -- they like to feed on the EAB larvae.

The Village has implemented a pro-active approach by checking on suspect trees, and bark striping to look for larvae. We have also implemented an ash tree reduction program to remove ash trees that are in poor and declining condition and replace them with a diverse variety of species to reduce the potential of future pest devastation.

If you believe there may be an EAB infestation in your tree, contact the Forestry Team at the Department of Public Works, 847-705-5200.

**One of the biggest ways to help contain this pest is by not transporting logs for fire wood from other states or areas.** EAB likes to hitch-hike on fire wood. Usually fire wood that is sold at local retail stores or nursery stock is safe to buy.

# Here's What You Need to Know About Voting Options for Presidential Election

## General Election - November 4, 2008

FEDERAL OFFICES	U.S. President/Vice President U.S. Senate U.S. Representatives
STATE OFFICES	State Senators State Representatives
COUNTY OFFICES	Circuit Court Clerk Recorder of Deeds State's Attorney
JUDICIAL OFFICES	Supreme Court Appellate Judges Circuit Court Judges Resident Circuit Court Judges Subcircuit Judges (Vacancies, if any, will be filled)

### GRACE PERIOD REGISTRATION AND VOTING

**(ONLY AT COOK COUNTY CLERK'S OFFICE, 69 W. WASHINGTON ST., CHICAGO, AND SUBURBAN COURTHOUSES) OCTOBER 8, 2008 THROUGH OCTOBER 21, 2008**

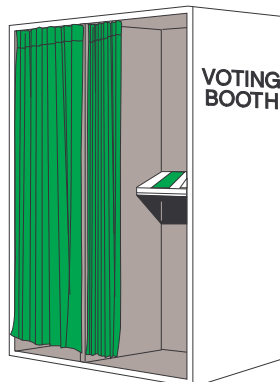
There is only one way and one place to register to vote during the 14-day grace period. Unregistered voters must sign up to vote, in person, at the Cook County Clerk's downtown Chicago office: 69 W. Washington St., Room 500, and suburban courthouses. You must show two pieces of identification to register.

Grace-period voters must vote absentee. You can: 1) vote in person at the Cook County Clerk's office immediately after signing up to vote; or 2) receive an absentee ballot by mail that you can complete at home and return to the Cook County Clerk's office before Election Day.

Grace-period registrants are not allowed to vote at the polls on Election Day or vote at any early voting site.

### EARLY VOTING (no excuse or reason needed)

Registered voters in suburban Cook County can vote early from Monday, October 13, 2008, through Thursday, October 30, 2008, at any one of the early voting sites which are scattered across suburban Cook County, as well as downtown Chicago. The Village of Palatine, 200 E. Wood Street, is one of the Early Voting sites. The hours are Monday through Friday, 8:30 a.m. to 5:00 p.m., and on Saturday (October 18th & 25th) from 9:00 a.m. to 5:00 p.m. Early voting will be conducted on touch screens that store every ballot style in the County, permitting any voter in suburban Cook to vote at any location. **Early Voters must show a current government-issued photo ID (Illinois Driver's license, a State ID, or a Passport) to vote early.** For a complete listing of early voting sites visit [www.voterinfo.net](http://www.voterinfo.net).



### IN-PERSON ABSENTEE VOTING (ONLY AT COOK COUNTY CLERK'S OFFICES) (must provide a reason)

In-Person Absentee Voting will take place on Friday, October 31, 2008 (8:30 a.m. to 5:00 p.m.), Saturday, November 1, 2008 (9:00 a.m. to 12 noon), Sunday, November 2, 2008 (9:00 a.m. to 12 noon), and Monday, November 3, 2008 (8:30 a.m. to 5:00 p.m.), only at the Cook County Clerk's five suburban courthouses and their downtown office.

### MAIL IN ABSENTEE VOTING (must provide a reason)

If you prefer to vote absentee by mail, or if you have children away at school who wish to vote absentee, you may pick up an application at Village Hall or download the application at [www.voterinfo.net](http://www.voterinfo.net).

### VOTER REGISTRATION CONFIRMATION AND/OR POLLING PLACE INFORMATION

To confirm that you are a registered voter and/or to check your precinct # and polling place, please call the Cook County Clerk's office automated number at (312)603-0906 or you may visit their website at [www.voterinfo.net](http://www.voterinfo.net)

### ELECTION JUDGES

If you are interested in being an Election Judge, please contact the Cook County Clerk's Office at (312)603-0965 or visit their website at [www.voterinfo.net](http://www.voterinfo.net) for more information.

For additional information, please visit [www.palatine.il.us](http://www.palatine.il.us).

## Check New Flood Insurance Rate Maps to See If Flood Insurance Is Required for Your Home

The Federal Emergency Management Agency (FEMA) has republished the Federal Flood Insurance Rate Maps (FIRM) for all of Cook County. These new maps became effective on August 19, 2008. These are the maps used by both the Village to regulate development in floodplains and by lending institutions to determine if a home is within a Flood Hazard Area and the homeowner needs to carry flood insurance when they obtain a mortgage or refinance their home.

The Base Flood Elevations and the boundaries of the Special Flood Hazard Area are essentially the same as on the previous maps. The boundaries may be slightly different in some areas because a more current ground elevation survey was used in its preparation. More importantly the maps are easier to use because the flood plain boundaries are overlaid on a 2005 aerial photograph.

These new maps are available for viewing in the reference section of the Palatine Public Library located at 700 N. North Court, or in the Village's Engineering Department at the Village Hall located at 200 E. Wood Street. They can also be viewed on FEMA's web site at <http://msc.fema.gov>.

Though the maps are a more accurate depiction, extreme care still needs to be used in determining if a property is in the floodplain. Because of the scale of the maps and because a topographic survey of such a

large area cannot be totally accurate, the Village and most lenders will err on the side of caution when a structure or property looks to be near a flood hazard area. Flood insurance is required by law and cannot be waived once the lender determines that a structure is in the Flood Hazard Area. However, there is a process to correct the maps when it can be demonstrated there is an error. The Federal Emergency Management Agency (FEMA) can issue a Letter of Map Amendment (LOMA) stating that the structure is not located in the floodplain. To obtain a LOMA the homeowner must submit to FEMA elevation information certifying that the lowest adjacent ground elevation next to the home, as well as the lowest floor elevation (this includes the basement floor or the elevation of the crawl space if there is no basement) are both above the Base Flood Elevation (BFE).

The FIRM's for the Palatine area only depicts the floodplain adjacent to Salt and Buffalo Creeks. Other areas within the village such as low lying depression areas may be classified as floodplain per village ordinance. The Village Engineering Department can assist you in determining whether your property is located in a flood hazard area. They can also help you in determining whether an elevation certificate is available for your property or can assist you in preparing one if your flood insurance carrier requests one. To obtain flood hazard (floodplain) information, call (847) 359-9044.

## Cost-Sharing Programs Help with Flood Prevention

To assist with the repair or rehabilitation of residential sewers, as well as other flood related issues, the Village of Palatine has established a variety programs for our residents. The types of improvements covered under the program include:

- Sewer back-up check valves: Village to contribute 50% of cost to a maximum of \$750.
- Conversion to overhead sewers: Village to contribute 50% of cost to a maximum \$5,000.
- Disconnection of sewer footing drains: Village to contribute 50% of cost up to a maximum of \$2,500.
- Replacement of sewer laterals from home to sanitary main.
- Storm sewer hook-ups for sump pump discharge.
- Replacement or repairs of footing drains.
- Replacement or installation of basement window well drains.

To further reduce the costs associated with the projects outlined above, the Village will waive all applicable building permit and review fees. In an effort to help cover a resident's portion of the costs associated with the eligible improvements, the Village has also created a low interest loan program (eligibility is NOT based on income). The loan amount may range from \$1,000 to \$10,000 and would have a term of 10 years.

For a copy of the Sewer Loan Program Application Procedures and Information Packet, please contact the Village's Engineering Department at (847) 359-9044.

## Trick or Treat

Palatine  
Trick or Treat  
hours are  
from  
**3:00-7:00 PM**  
on Friday,  
October 31.



Trick or Treat only at  
those homes where the  
porch light is on.

# Hope Starts with You!

## **Palatine's Community of Excellence Committee Sponsoring October 29 Breast Cancer Forum**

The American Cancer Society estimates that 182,460 new cases of invasive breast cancer will be diagnosed among women in the United States and approximately 40,480 women will die of the disease. There is hope, but we must all do our part to beat the disease. Take charge of your breast health and support the fight against breast cancer by attending an upcoming public forum.

The Palatine Board of Health welcomes residents to a free Breast Cancer Forum – "Hope Starts With You!" – on Wednesday, October 29, 2008 from 6:00 p.m. to 8:30 p.m. in the Council Chambers on the second floor of the Palatine Village Hall, 200 E. Wood Street.

The breast cancer forum is a continuing campaign and partnership with the Palatine Community of Excellence Committee, made

up of sixteen local organizations that are committed to educating residents about how to reduce the risk of cancer.

The forum will feature speakers from 7:00 p.m. to 8:00 p.m. from the American Cancer Society and Wellness Place. They will present information on breast cancer prevention and awareness and also local breast cancer resources. The Palatine Township Senior Citizens Council will present information on breast cancer and Medicare Parts B and D.

Before the speakers, MammaCare of the St. Alexius Medical Center will offer a free class on self breast exam from 6:00 p.m. to 7:00 p.m. in Meeting Room A. You will practice on life-like breast models and be able to perform a thorough breast exam. Early detection saves lives and is our best defense. All classes are taught by MammaCare certified registered nurses. Advance registration is required for the free class by calling the Palatine Environmental Health Division at (847) 359-9090. Class size is limited so please call today.



Throughout the forum, a Breast Cancer Resource Fair will be held from 6:00 p.m. to 8:30 p.m. in Meeting Room C. Stop by and obtain information and resources on breast cancer from area health professionals, agencies and organizations.

For more information, please visit [www.palatine.il.us](http://www.palatine.il.us) or contact the Environmental Health Division at (847) 359-9090.

## **Join the Fun & Festivities at the Tree Lighting It's all Happening in Downtown Palatine On Saturday, November 22**

The holiday season will officially arrive in Palatine on Saturday, November 22 at 5:00 p.m. when Rudolph and Santa will join Mayor Mullins in lighting the Holiday Tree at Towne Square.

Residents are invited to enjoy a variety of free activities both before and after the tree lighting, as well as entertainment and refreshments that will continue throughout the evening.

### **Downtown Merchants Host Open House November 21-22**

The Downtown Merchant's 20th Annual Holiday Open House will kick off the weekend celebration the preceding evening, Friday, November 21 from 5:00 p.m. to 8:00 p.m. with candlelight shopping and holiday treats. The downtown area will be brimming with holiday fun and activities!

Check the Village's website, [www.palatine.il.us](http://www.palatine.il.us) for further information.



## **Residential Licensing: What Landlords Need to Know!**

Village ordinance specifies that residential rental dwellings be licensed annually. Multi-family apartment complexes, coach homes, condominiums, duplexes, town homes and single family homes are required to be licensed.

Since 1990 the rental program has proven successful in helping tenants and property owners maintain living conditions and property values. A list of currently licensed residential rental dwellings in Palatine can be viewed on the village website at <http://www.palatine.il.us/communityservices/neighservices> (click on Rental Licensing Program).

The process of obtaining a Rental Dwelling License starts with a phone call to the Neighborhood Services Division at (847) 202-6673.



## 'Cans for Cash' Challenge: A Great Opportunity to Recycle Aluminum Cans And Win a Cash Award For Palatine

The Village of Palatine will be participating in the Cans for Cash City Recycling Challenge from October 1 – 31, 2008. This national contest rewards cities for recycling aluminum beverage cans.



All Palatine residents, businesses, schools, and community groups are encouraged to participate. Residents may place aluminum cans in their recycling carts for weekly curbside collection. There is no need to sort and separate aluminum cans from other recyclable materials. Participants who do not have curbside recycling collection may bring aluminum cans to the designated drop-off location in the south parking lot across from Village Hall at 200 E. Wood Street.



Awards will be presented to the city that collects the most cans and has the most innovative ideas for collection. Any awards received will be used to further recycling efforts and education in Palatine.

For further information, or if your business, school or community group would like to participate, please contact the Environmental Health Division at (847) 359-9090 or visit [www.palatine.il.us](http://www.palatine.il.us).

## Possible Revisions to Village's Sign Ordinance To be Discussed on November 10

In 2006, the Village Council approved a number of amendments to Palatine's temporary sign regulations. These amendments included restrictions regarding signs located within the public right-of-way (such as event signs for garage sales and open houses, and political signs). These amendments were drafted to address the visual clutter and related safety hazards that result from the installation of temporary signs within the right-of-way.

The Council is again reviewing this issue to determine if additional restrictions should be adopted, up to and including a ban on temporary event signs and political signs within the right-of-way. To obtain public input the Council held a hearing on September 2, 2008, and will conduct an additional hearing during their regular meeting at 7:00 p.m. in the second floor Council Chambers on November 10, 2008.

Anyone interested in this issue is invited to attend the November 10th meeting and offer testimony. In addition, please feel free to send your comments to the Village via e-mail at [signs@palatine.il.us](mailto:signs@palatine.il.us) or by regular mail to the Village of Palatine, Attn: Administration, 200 E. Wood Street, Palatine, IL 60067.

## Change Your Clock – Change Your Batteries

With the end of Daylight Savings Time at 2:00 a.m. on Sunday, November 2nd, this is an ideal time to replace your old smoke detector and carbon monoxide detector battery with a fresh one that will be sure to sound the alarm. It is recommended that you change your smoke detector and carbon monoxide detector battery twice a year. Why not do it at the same time you change your clocks? It's sound advice from the Palatine Fire Department that could save your life.



## Blood Donation Q & A: Answers To Your Questions About Giving the Gift of Life

The Palatine Board of Health is hosting a Community Blood Drive on Monday, October 20, 2008 from 1:00 p.m. – 7:00 p.m. at the Palatine Village Hall, 200 E. Wood Street in Meeting Room C. The blood drive will be conducted by LifeSource, Chicagoland's Blood Center. The need for blood is constant and ongoing. Every time you donate blood you can save the lives of three people.

The following are blood donation facts and common questions.....

- **Why should I donate blood?**  
About half of us will need donated blood in our lifetimes, yet only 5% of us actually donate blood.
- **Who can give blood?** You can if you are in good health, weigh at least 110 pounds and are at least 17 years old (16 years old with parental consent).
- **Can I be on different medications and still donate blood?**  
Yes, you can be on different medications. If you have a medical question, please call (800) 486-0680.
- **Does it hurt to give blood?**  
Giving blood is no more painful than a slight pinch on the arm.
- **What happens to blood after it is donated?** LifeSource tests the blood and separates it into 2-3 components to meet specific patient needs. The blood is then distributed for patient transfusions in over 160 hospitals and home health agencies in the Chicagoland area.

For more information or to schedule an appointment, contact LifeSource at (847) 803-7943 or visit [www.lsbrighten.org](http://www.lsbrighten.org). Blood drive walk-ins are always welcome.

# Palatine Street Fest 2008

Hometown Fun Under the Sun!



Palatine Street Fest  
CHILI COOK-OFF

Street Fest gets better every year! In it's 9th year, Street Fest welcomed hundreds of Palatine residents as well as those from neighboring communities who enjoyed a weekend of great weather, fabulous food from more than a dozen Palatine restaurants, kiddie games, and terrific entertainment. Smash Mouth was a huge hit with the crowd. Street Fest 2008 was a true hometown

event with something for everyone during the three day festival.

A big thank you goes to the more than 200 volunteers who helped to make Street Fest possible.

Thanks, too, to all the people who came out to support Street Fest this year.

We'll see you next year for another great event!!







And the 2008 winners are . . .



## 2008 PIE EATING CONTEST

Sponsored by Zimmer Hardware

### WINNERS OVER 12 YEARS OF AGE

**1st Place** Ellen Wheeler

**2nd Place** Erik Campbell

**3rd Place** Matt Skiba

### WINNERS UNDER 12 YEARS OF AGE

**1st Place** Ryan Porto

**2nd Place** Jacob Rowden

**3rd Place** Alec Stadler

## 2008 SWEET PEA PET PARADE

Sponsored by Fox Glove Cottage and The Music Room

### **Best Costume (home made):**

Gracie, Saint Charles Spaniel owned by Julia Proctor

### **Best Costume (store bought):**

Princess, dachshund, owned by Linda Satchell

### **Best Other (non-dog):**

Mickey Mouse, owned by Jean Schonta

### **Best Sports Fan:**

Hogan, Boxer, owned by Sheila Wichman

### **Longest Ears:**

Cleo, Basset hound, owned by Carol Cook

### **Pet/Owner Look-alike:**

Lucy and Ethel, Devon Rex Cats, owned by Candice Meilner

## 2008 CHILI COOK-OFF

Sponsored by Harris Bank

### **PEOPLE'S CHOICE AWARD**

**1st Place** Linda Steck

**2nd Place** Jim Bennett

**3rd Place** Kenny Joerg

### **JUDGES' AWARD**

**1st Place** Jim Bennett

**2nd Place** Kenny Joerg

**3rd Place** Rebecca Voss

The proceeds from the Chili Cook Off were donated to Palatine Township's Apple Tree Campaign.

# Thanks, Street Fest Volunteers -- You Help Make This A Great Hometown Event!

Joe Aichholzer  
Bonnie Alcaro  
Kevin Alcaro  
Brandon Allen  
Matt Amato  
Scott Andersen  
Kevin Anderson  
TJ Andrew  
Mike Ballenger  
Karen Balough  
Neil Baltz  
Matt Barry  
Sue Bartels  
Terry Bartels  
Jennifer Bartels  
Nellie Beckner  
Stan Bednarek  
Adam Begale  
Jen Bemis  
Norm Bemis  
Bonnie Bennett  
Judy Bennett  
Carol Bernardi  
Rhonda Besander  
Mike Bianca  
Nancy Bluver  
Jennifer Boeckelman  
Chris Brady  
Cathy Brandel  
Larry Brandel  
Betsy Brink  
Christa Burris  
Kevin Burris  
Jeff Butterfield  
Matt Buzzard  
Marc Campise  
Kathy Carter-Mc Lin  
Robin Cipri  
Roy Cipri  
Kelly Clegg  
Troy Coleman  
Sue Conn  
Joe Corso  
Debbie Danecki  
Michael Danecki  
Rick Dawson  
Janet Derken  
Joe Duer  
Jen Deutchmann  
Zach Deutchmann  
Mark Dubinski  
Chris Durkin  
Dennis Dwyer  
Jim Eiden  
Jim Eipert  
Alyssa Engelbrecht  
Kurt Engelbrecht  
Jim Ericksen  
James Ericksen, Jr.  
Jennifer Ericksen  
Rick Evans  
Bob Falardeau  
Mark Fink

Dick Fonte  
Dulcy Fonte  
Jeff Forsberg  
John Forsberg  
Julie Forsberg  
Mary Fox  
Bob Franz  
Brian Freese  
Erin Freese  
Mike Freese  
Nancy Freese  
Kristen Frerichs  
Wayde Frerichs  
Randy Freise  
Dave Gable  
John Garby  
Tony Garcia  
Diane Gartner  
Kathy Gartner  
Jodi Gaski  
Ron Gbur  
Lesia Gemelli  
Sarah Glumm  
Steve Glumm  
Mary Goluszka  
Michael Goluszka  
Tom Gordon  
Joan Gordon  
Mary Gorecki  
Nick Grasso  
Nicole Gratziana  
Pat Gratziana  
Matt Genning  
Brad Grossman  
Grant Grossman  
Bob Haas  
Diane Haas  
Mike Haduch  
Jane Haduch  
Bill Hall  
Janean Hallahan  
Jeff Hallahan  
Linda Hallett  
Mark Hallett  
Bob Hanson  
Mary Hanson  
Karen Harold  
Kate Harris  
Brian Harrison  
John Helpap  
Dave Huemann  
Lisa Huemann  
Tricia Huber  
Sandy Hustedt  
Pam Jackson  
Brigid Jacobs  
Michael Jacobs  
Chris Jacobsen  
Doug Jarvis  
Bill Jennings  
Connie Jennings  
Carrie Jodelka  
David Jodelka

Colleen Johnson  
Fred Johnson  
Matt Johnson  
Annette Kandell  
Tom Kearns  
Linda Kielas  
Mary Kirby  
Fred Kleeburg  
Rob Kluzek  
Andrea Koenemann  
Shane Koenemann  
Marge Komora  
Greg Koniecki  
Pat Koniecki  
Elizabeth Konz  
Elias Koutas  
Jean Koutas  
Laura Kowalski  
John Koziol  
Chad Kurka  
Beth Laing  
Steve Laing  
Dorothy Lance  
Joe Lance  
Deb Landers  
Marla Laurin  
Vicky Laues  
Terry Leighty  
Jim Lennon  
Marty Lennon  
Lora Lewis  
Tim Maher  
Brian Maiden  
Norm Malcolm  
Richard Maxwell  
Kathy Marinelli  
Paul Mehring  
Jimmy Messineo  
Stacy Messineo  
Tim Millar  
Michael Millington  
Dan Mc Coy  
Jim McCullar  
Christina Mesker  
Chris Meuret  
Joe Mueller  
Liz Mueller  
Susan Minott  
Carol Morad  
Bob Morris  
Tom Murphy  
Karen Murrell  
Jeff Murrell  
Matt Nagy  
Tara Nagy  
Todd Neicekowski  
Eric Nevers  
Jennifer Nevers  
Liz Noe  
Jack O'Connor

Brooke Opitz  
Bryan Opitz  
Edie Opitz  
Reid Ottesen  
D. Panek  
Rudy Perocho  
Cris Petykowski  
Dan Petykowski  
Joe Petykowski  
Julie Petykowski  
Joe Pezdirtz  
Irene Pezdirtz  
Carol Pfister  
Kevin Piasecki  
Sherry Piasecki  
Becky Piliponis  
Darald Piliponis  
Sherri Piwowarczyk  
Bob Pizek  
Sue Podgorski  
Bill Pohlman  
Rich Portmann  
Denise Prehm  
Larry Pyzik  
Dorothy Raef  
Matt Rauen  
Laurie Rayborn  
Dennis Rice  
Christine Rice  
Ed Richter  
Kevin Roberts  
Betty Rocha  
Herb Rocha  
Judith Rock  
Dan Ruppert  
George Ruppert  
Tom Ruppert  
Meg Ruscheinski  
Doris Sadik  
Jim Samack  
Sue Samack  
Barb Santi  
Rick Santi  
Ken Schroeder  
Jon Schmidt  
Larry Schroth  
Mike Seebacher  
Carol Sellner  
Joe Siciliano  
Don Skinner  
Jeremy Smith  
Tom Smith  
Harry Spila  
Elizabeth Spila  
Mary Spila  
Paul Spletzer  
Herman Staiger

Terry Stilling  
Laurie Stock  
Alan Stoeckel  
Amanda Stoeckel  
Andy Stoeckel  
Allison Stoeckel  
Cindy Stoeckel  
Susan Stoga  
Debby Szewczyk  
Marty Szewczyk  
Anastasia Tagris  
Steve Terzic  
Tracy Thrun  
Diane Tom  
Anna Toth  
Chuck Towner  
Ron Tragrasz  
Linda Trilling  
Neal Trilling  
Steve Trilling  
Dave Tuegel  
Diane Tuegel  
Mike Vargas  
Jim Vlcek  
Laurie Vlcek  
Dan Vrbancic  
Tracey Vrenios  
Ben Vyverberg  
Hugh Waddington  
Jodi Waddington  
Julie Wahl  
Ken Wahl  
Paul Wallis  
Carol Warnstedt  
Ron Warnstedt  
Breanna Webb  
Diane Webb  
Matt Webb  
Nicole Weglarz  
Danae Weiler  
Philip Weisenberger  
Matt Wempe  
Ernie Wickstrom  
Carolyn Williams  
Charlene Wilson  
Jim Wilson  
Nikki Winikates  
Jan Wood  
John Wood  
Dylan Sean Woods  
Don Wolta  
Sonia Zavolokoff  
Don Zipse

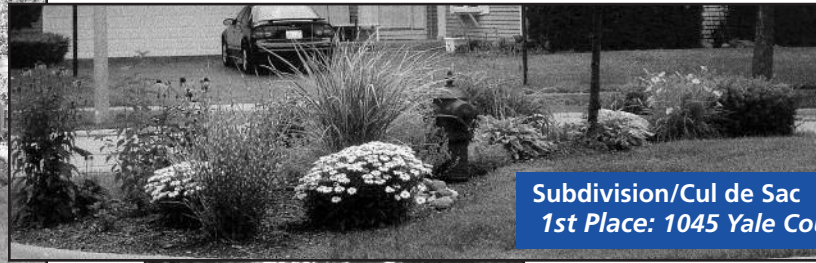


# Congratulations to Our 2008

## Hometown Pride Award Winners!



**Multi-family: 1st Place:**  
108 West Wood Street  
Units C&D, Valissa  
Hilligoss and Mary Winch



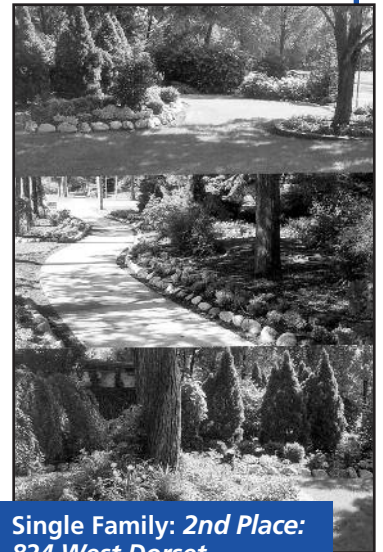
**Subdivision/Cul de Sac  
1st Place: 1045 Yale Court**



**Business: 1st Place:**  
Digital Home Technologies  
346 North Northwest Highway



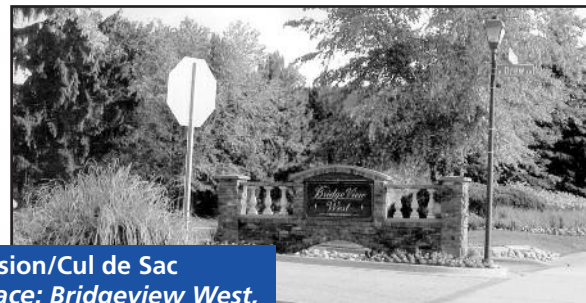
**Single Family: 1st Place:**  
1101 South Smith Street  
Claudette Ligon



**Single Family: 2nd Place:**  
824 West Dorset  
Bruce and Emily Duncan



**Multi-family: 2nd Place:**  
162 South Stonington Drive #474  
Rich Scalzo



**Subdivision/Cul de Sac  
2nd Place: Bridgeview West,  
Quentin Road at Drew Lane**



**Business: 2nd Place:**  
Palatine Inn,  
95 West Northwest Highway



**Single Family: 3rd Place:**  
1157 West Whytecliff Road  
Arlene Krofel

# Plat of Survey: What Is It & When Do You Need One?

## Q. What is a Plat of Survey and why is it so important?

**A.** A plat is a map, drawn to scale, showing how a piece of land is divided. Plats can also legally dedicate land for roads and other rights-of-way/easements. It basically shows your house on your lot with all of your lot lines, setbacks and easements. Important? ABSOLUTELY! Any outside work requiring a building permit will require a copy of the plat of survey.

## Q. When would I have received one?

**A.** Typically, you would have received a plat of survey when you purchased your home. It is usually found in your mortgage documents. If you cannot locate it, then you will need to order a new one.

## Q. Doesn't the Village have a copy?

**A.** The Village will only have a copy if you have provided it to us in the past for an outside project that required a building permit. However, a Village copy may be outdated and not accurately represent the current conditions.

## Q. Why are they required?

**A.** The Village has ordinances that govern the amount of your lot that can be covered by structures and impervious surfaces. The Zoning department will use your plat of survey to verify that your project does not require any special relief.

## Q. How long does it take to create a plat of survey?

**A.** Most land surveys require a two week turnaround time from initial order to completion. A survey field crew will visit your property to measure and obtain the necessary data. This information is then turned into a computer generated plat of survey.

## Q. What is a Land Surveyor?

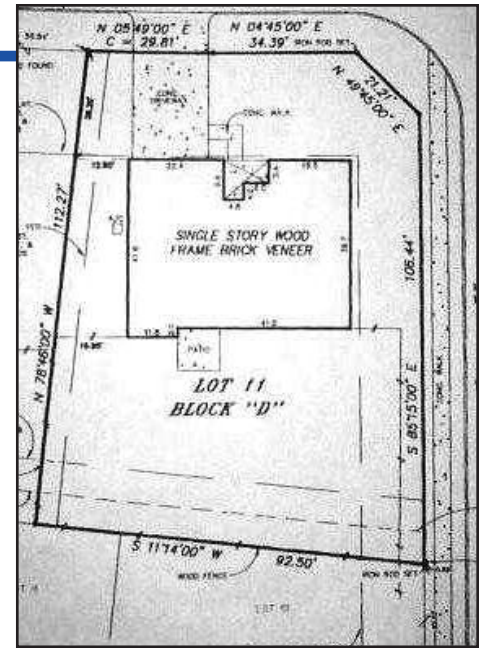
**A.** A Professional Land Surveyor is a person who is qualified by education and experience, and who has passed an examination for registration required by the State of Illinois to practice Land Surveying in Illinois.

## Q. How can I obtain the services of a licensed Land Surveyor?

**A.** Ask someone who has employed a competent Land Surveyor. Consult with your attorney, realtor, banker, or title insurer. Look in the yellow pages under "Surveyor-Land." Obtain a list of Professional Land Surveyors in your area free of charge from the Illinois Professional Land Surveyor's Association • 203 South Walnut Street • P.O. Box 588 • Rochester, IL 62563 • Phone 217/498-8102 • Fax 217/498-8489; [www.iplsa.org](http://www.iplsa.org)

## Q. How much will a survey cost?

**A.** Fees of Surveyors are on a level with other professions. The Surveyor's fees are dependent upon the size of the land and other factors, including the terrain and vegetation, accessibility, and if reliable survey monuments exist in the area. Therefore, the Surveyor will estimate the approximate cost of the survey for you prior to commencing the work. However, do not depend on the lowest priced survey to be the best survey. Obtain the services of a reputable Surveyor.



## It's Palatine's First-Ever 'Scarecrows on Parade' -- And You Can be Part of It!

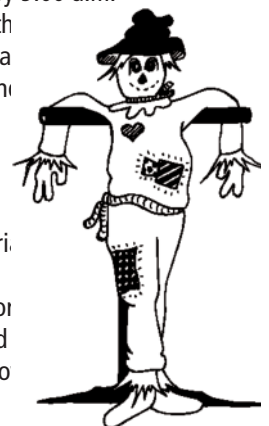
**A**pple cider, hayrides, pumpkins -- and scarecrows! They are all part of the fall season, and this year for the first time ever, the Village of Palatine, the Palatine Beautification Commission, and Palatine Home Depot are sponsoring a scarecrow decorating contest.

Any Palatine business, non-profit organization, school affiliate, sports affiliate, homeowners association, or ecumenical or civic group is invited to participate in this inaugural "Scarecrows on Parade" event. Twelve scarecrow "skeletons," built and donated by Palatine Home Depot, will be available on a first come, first served basis beginning at the end of September. Call the Public Works Department, (847) 705-5200 to check on availability if your group would like to participate. Representatives from participating groups will pick up their skeletons at the Public Works Facility, 148 W Illinois Avenue.

Each participating group will be responsible for bringing their scarecrow creation to the Farmers' Market by 9:00 a.m. on Saturday, October 18, 2008. Judging of the crows will take place at 12:00 noon at the Farmers Market. The winning entry will be named and presented with an award at that time.

After the judging, all of the participating scarecrows will be put on display along the rail walk fence next to the Firemen's Memorial.

Sound like fun? You bet! Call the Public Works Department today to say "Count us in!" and make plans to decorate the winning scarecrow.





## Recycle That Old Computer, Printer, Camera, Cell Phone, Answering Machine & More On October 11

**M**otorola and the Solid Waste Agency of Northern Cook County (SWANCC) will be hosting a computer and electronics recycling event free of charge on Saturday, October 11, 2008 from 9:00 am to 3:00 pm at Motorola's Schaumburg facility at 1301 E. Algonquin Road. Participants should enter at Gate A.

Only residentially-generated equipment will be accepted. Businesses, school districts and governmental institutions are prohibited from participating in the event.

### Items Accepted for Collection Include:

#### Computers and Peripherals:

PC's, Monitors, Hard Drives, Modems, Printers, Mice, Keyboards, Scanners.

#### Office Equipment and Products:

Telephones, Typewriters, Answering Machines, Calculators, Fax Machines, Copy Machines, Shredders and Postage Machines.

#### Entertainment and Visual Equipment:

TV's (no consoles), VCR's, DVD Players, Stereo Equipment, Cameras, Camcorders, Video Game Players and Joysticks.

**Cell phones and pagers will be collected for donation.**

#### Please Do Not Bring:

Air Conditioners, Humidifiers, Dehumidifiers, Microwaves, Large Home Appliances, Power Tools, Toasters or Toaster Ovens, Blenders, Software, Disks, CD's or DVD's.

Supply-Chain Services, Inc., (ISO 14001, ISO 9001, IAER and NAID certified), will recycle all computer/electronic materials in an environmentally responsible manner at its Lombard, IL facility. Cell phones will be collected for Motorola's Race to Recycle Program, which generates funds for K-12 schools. Because all electronics collected are recycled and not donated for reuse, tax receipts will not be distributed.

For many other electronic and computer recycling programs including permanent drop-off, donation and mail in locations visit [www.swancc.org](http://www.swancc.org) or contact the Palatine Environmental Health Division at (847) 359-9090.

## Green Pages Are Your Guide to Recycling Everything From Camcorders to Construction Debris

**L**ooking for a local resource to recycle your latex paint, batteries, tires, propane tanks and all of those other items that are not collected curbside? The Solid Waste Agency of Northern Cook County (SWANCC) provides Green Pages, a useful resource for residents looking to get rid of items they no longer need.

Green Pages features sections on outlets for recycling appliances, batteries, construction debris, electronics, office machine cartridges, metals, motor oil and many other items.

Green Pages also lists reuse opportunities for books, clothing, office equipment, sporting goods, toys and other materials. Using Green Pages for items that can be

reused or recycled keeps a significant amount of waste from going to the landfill.

Residents can navigate through Green Pages online at [www.swancc.org](http://www.swancc.org). The entire guide can be downloaded as well. Residents who do not have internet access can contact SWANCC at (847) 724-9205 or the Palatine Environmental Health Division at (847) 359-9090 for information.

In addition to Green Pages, residents may sign up for SWANCC's electronic mailing list (E-list) to receive information on upcoming SWANCC events. SWANCC's E-list will help you remember to attend recycling collections, household chemical waste collections and other fun events. The E-list also provides helpful information on waste reduction tips and practices. It's a great way to stay up to date with community events.

SWANCC promotes waste reduction and sustainability to assist in expanding the life of landfills, natural resources and a cleaner environment. Your green efforts do make a difference. Please take the initiative to get involved in their programs and spread the word to neighbors and friends in the SWANCC community.





# Palatine Farmers' Market Reaches Peak Season Through October

Every Saturday morning at the train station the Palatine Farmers' Market offers the best of the fall season in fruits, vegetables and other gourmet products and special events.

This is the season for warm soup and casseroles, fruit pies and cobblers. All the best leeks, turnips, onions, peppers, celery, squash and other fine ingredients for soups and casseroles are the freshest available at the Farmers' Market. A huge variety of fresh-from-the-tree apples, pears and peaches are on hand from Michigan for eating plain or baking into a family recipe. Add pure spices from La Spiceria.

For the season, pick out the perfect pumpkins, squashes, gourds, Indian corn, fresh and dried flowers and more for decorating. Don't miss the last few weeks of the Palatine Farmers' Market. Stock up for the winter ahead.

The friendly atmosphere at the Market is enhanced by local street musicians every Saturday morning. In addition to the Audubon Society appearing monthly, the U of I Master Gardeners are present every Saturday offering diagnosis and recommendations to solve

your gardening, lawn and tree problems. Fall is often the best time to treat your landscape for best results in the spring.

If you haven't stopped by "Journey to Greendome" our new vendor with natural solutions for cleaning, pest control, and skin care, don't miss your chance to meet Courtney and Denise Hamm. They offer terrific home remedies-free and natural!

The final Market of the Season is October 25, with trick or treating and games at the vendor booths. Children, adults, and pets are invited to wear costumes and enjoy the fun. The Market is open from 7:00 a.m. to 1:00 p.m.

Check the Village of Palatine website [www.palatine.il.us](http://www.palatine.il.us) for more information.



# Village of Palatine

## N E W S L E T T E R

The Village of Palatine  
200 E. Wood Street,  
Palatine, Illinois 60067  
Village Hall: (847) 358-7500  
Village Action Line : (847) 705-5200  
E-mail: [village@palatine.il.us](mailto:village@palatine.il.us)  
Home page: [www.palatine.il.us](http://www.palatine.il.us)

Rita L. Mullins, Mayor  
(847) 359-4854; [rmullins@palatine.il.us](mailto:rmullins@palatine.il.us)  
Margaret R. Duer, Village Clerk  
(847) 359-9051; [mduer@palatine.il.us](mailto:mduer@palatine.il.us)

Michael E. Jezierski, District 1  
(847) 359-3573; [mjezierski@palatine.il.us](mailto:mjezierski@palatine.il.us)  
Scott Lamerand, District 2  
(847) 894-0002; [slamerand@palatine.il.us](mailto:slamerand@palatine.il.us)  
Daniel A. Varroney, District 3  
(847) 359-6479; [dvarroney@palatine.il.us](mailto:dvarroney@palatine.il.us)  
Greg Solberg, District 4  
(847) 358-0531; [gsolberg@palatine.il.us](mailto:gsolberg@palatine.il.us)  
Jack Wagner, District 5  
(847) 358-3766; [jwagner@palatine.il.us](mailto:jwagner@palatine.il.us)  
Brad Helms, District 6  
(847) 894-0006; [bhelms@palatine.il.us](mailto:bhelms@palatine.il.us)

Reid Ottesen, Village Manager  
(847) 359-9031; [rottesen@palatine.il.us](mailto:rottesen@palatine.il.us)

Kaye Lowman Boorum, Newsletter Editor

Presorted  
Standard  
U.S. Postage  
**PAID**  
Permit No. 2855  
Palatine Illinois

\*\*\*\*\*ECRWSS\*\*

POSTAL CUSTOMER  
Palatine, Illinois