

VILLAGE of PALATINE



SPRING 2013

In this ISSUE

Every Vote Counts.....	2
Upcoming Events.....	4
Avoid Work-At-Home Scam...	5
Recycling Program Pays Off for Village.....	6
Rail Safety Relies on Citizen Cooperation.....	8
Protect Young Pedestrians; Teach Good Safety Habits ...	9
Streets for 2013 Resurfacing Program	11
Thinking About Renting....	12

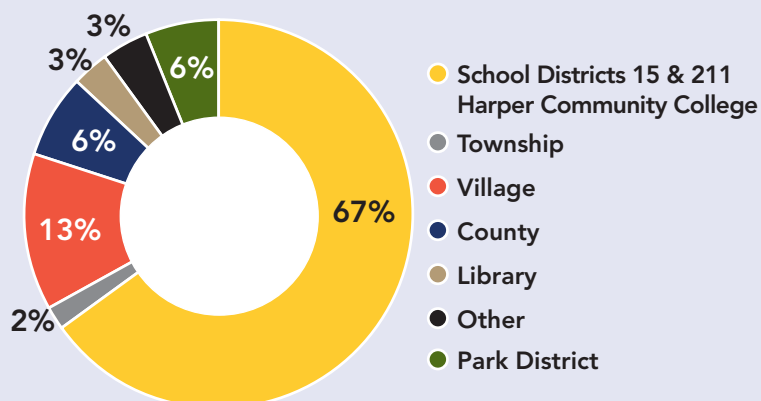
2013 VILLAGE BUDGET BALANCED AND FISCALLY RESPONSIBLE

Palatine's Village Council recently adopted the 2013 Annual Budget and Capital Investment Plan. The Budget totals \$105,862,656, with \$64,441,093 representing the Operations Budget and the remaining \$41,421,563 representing the Capital Budget, TIF Districts, Debt Service, Transfers, Casualty/Liability/Health and other insurance Programs, and Pension Administration requirements. In total, this represents a decrease of \$7,264 in spending when compared to the 2012 Annual Budget.

The Budget provides for a second consecutive decrease in the property tax levy. The Village Council will now have decreased the property tax levy by more than \$113,000 over the past two years. The current reduction reflects a decrease of \$75,000 over the previous tax levy.

Continued on page 3

**Where Each Property Tax Dollar Goes
(Community Wide)**



VILLAGE OF PALATINE

200 E. Wood St.
Palatine, IL 60067

www.palatine.il.us
village@palatine.il.us

VILLAGE HALL HOURS

8 a.m. to 5 p.m.,
Monday through Friday



VILLAGE PHONE NUMBERS

Emergency911
Village Hall.....358-7500
TDD (Emergency).....911
TDD (Non-Emergency)359-9000
Village Action Line705-5200
Community Services359-9042
Fire (Non-Emergency).....202-6340
Police (Non-Emergency)359-9000
Public Works.....705-5200

Mayor

Jim Schwantz.....359-9007
jschwantz@palatine.il.us

Village Clerk

Margaret R. Duer.....359-9051
mduer@palatine.il.us

District 1

Aaron B. Del Mar894-0001
adelmar@palatine.il.us

District 2

Scott Lamerand894-0002
slamerand@palatine.il.us

District 3

Jim Clegg.....894-0003
jclegg@palatine.il.us

District 4

Greg Solberg894-0004
gsolberg@palatine.il.us

District 5

Kollin Kozlowski894-0005
kkozlowski@palatine.il.us

District 6

Brad Helms894-0006
bhelms@palatine.il.us

Village Manager

Reid Ottesen.....359-9031
rottesen@palatine.il.us

*All phone numbers are (847) area code
unless otherwise noted.*

APRIL 9 CONSOLIDATED ELECTION

Voter Registration Ends Tuesday, March 12

Grace Period Registration and Voting – Wednesday, March 13 through Saturday, April 6

- Only at the suburban courthouses
and Cook County Clerk's downtown
office, 69 W. Washington St.,
5th floor

Early Voting – Monday, March 25 through Saturday, April 6

- Must show a current government
issued photo ID

Voting by Mail

- To download an
application, visit
www.cookcountyclerk.com

Election Day - Polls are open from 6 a.m. to 7 p.m.

- To verify voter registration and polling
place, visit www.cookcountyclerk.com

For additional information, visit www.palatine.il.us or call the Village Clerk's
office, 359-9051.



EMERALD ASH BORER UPDATE

The Palatine Forestry Division faced one of its biggest challenges in 2012—the Emerald Ash Borer. The destructive green pest was found everywhere in the Village.

During the last four years, the Forestry Division has been steadily working through the Ash Tree Removal and Replacement Program to reduce the 4,800 ash trees on Village-owned property. Arborists have identified diseased, declining, or structurally unsound ash trees and removed and replaced them with alternate species.

At first the Village implemented this program in neighborhoods that had higher than normal ash tree populations. Within the past two years there has been such a rapid acceleration of the Emerald Ash Borer throughout Palatine

that the areas of concentration are not in one particular neighborhood any more.

Last year between the Forestry Division and the Village contractor, 485 infested trees were removed. Since 2007, Palatine has removed and replaced approximately 1,000 ash trees that were showing signs and symptoms of infestation or that were rapidly declining. In 2013, the anticipated rate of decline for existing ash trees will require the Village to remove and replace another 800 ash trees.

For more information about the management of the Emerald Ash Borer, contact the Department of Public Works, 705-5200, or visit www.palatine.il.us

PalatinE-News

Sign up to receive the latest information on community events, news and alerts
at www.palatine.il.us.

2013 Budget

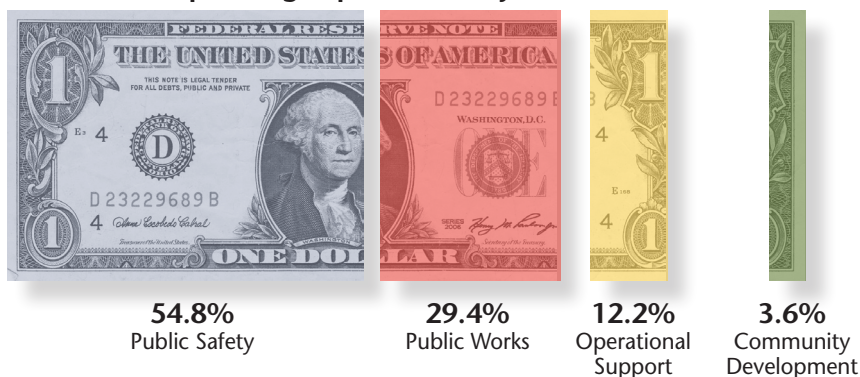
(continued from front page)

The Village comprises just 13 percent of the property tax dollars you pay.

In addition to the property tax reduction, the Operating Budget, for the second consecutive year, includes no new taxes or fees. This is a reflection of the repositioning and structural changes implemented over the past five years.

The past five years have been unlike any in modern economic history. In response, the Village has repositioned itself for a sustainable future that focuses on maintenance and financial stabilization. These efforts have led to a reduction of 26 full time employees since 2009, realignment of responsibilities and some service reductions. However, the core services expected by residents have remained in place and will be delivered in the most efficient manner.

Operating Expenditures by Function



The budget also continues our investment in the community's infrastructure. This regular investment is critical to protecting our public health, safety and welfare. The planned \$2 million investment in Village roads for 2013 is summarized on pages seven and 11 of this newsletter.

As we look to the future, our focus will remain on identifying opportunities to deliver the most cost effective services, assist existing businesses in their operational success and expansion, as well as attract new business and residents to our community. The Village Council and staff are always seeking opportunities to expand upon the sales tax base. Any sales tax expansion results in less dependency on the property tax. In the coming year we welcome the addition of new businesses to our community and look forward to continued stabilization of the property tax levy.

For more information on the 2013 Budget, please visit www.palatine.il.us. Search: budget.



NEW BUSINESSES

AUTOMOBILE

Reality Motors, Inc
540 W. Colfax St., #1
907-9353
Repair/Auto Sales

KC'S Car Wash
101 W. Northwest Hwy.
907-4619
Car Wash

BANKING/FINANCIAL
One Mortgage, Inc.
119 E. Palatine Rd., #200
963-1000
Mortgage/Banker

Titlemax
1102 E. Dundee Rd.
794-5190
Consumer/Installment Loans

BEAUTY
Chris & Dora's Hair Salon
56 W. Palatine Rd.
701-8297
Hair Salon

Meleah Noelle Boutique/Salon
1590 N. Rand Rd., Ste. F
850-9920
Hair Salon/Boutique

RETAIL/RESTAURANTS
Mediterranean Marketplace
1500 W. Algonquin Rd.
701-8074
Grocery Store

Peapod
790 W. Northwest Hwy.
583-9400
Parcel Pick Up/Groceries

Sonic Hemisphere
830 W. Northwest Hwy., #11
630-205-7001
Audio Equipment

Thai D Lite
1316 N. Rand Rd.
776-9105
Thai Restaurant

Noclean Aquariums
639 N. First Bank Dr.
888-785-7285
Aquariums

SERVICES
Bikram Yoga Palatine
1 N. Bothwell St.
202-9642
Yoga Instruction

Bryant & DaValle PC
399 N. Quentin Rd., #100
794-5222
Accounting Firm

DY Shoe Repair
408 E. Palatine Rd.
221-2456
Shoe Repair/Alterations

European Service At Home Inc.
47 W. Slade St.
202-1249
Home Care Services

Eye Level Learning Center of Palatine
31 E. Northwest Hwy.
217-9002
Learning Center

Hope Palliative & Hospice Care
1274 W. Northwest Hwy.
803-0400
Hospice Care

(847) area code unless otherwise noted.

Jo Wolthusen, Psy.D., PC
800 E. Northwest Hwy., Ste. 500
826-5881
Clinical Psychologist

Luna Martial Arts
1546 E. Dundee Rd.
224-616-8978
Martial Arts

Michelle Kukla, Psy.D., PC
800 E. Northwest Hwy., Ste. 500
701-4452
Clinical Psychologist

Sky Wire Media/Count Me In
1530 E. Dundee Rd., #150
981-8870
Computer Software

Steadfast Management Co.
1950 N. Cambridge Ct.
991-4466
Residential Property Mgmt.

Successful Longevity Clinic
434 E. Northwest Hwy.
Acupuncture Clinic

Synergis Education
110 N. Brockway St., #310
496-7608
Marketing

Wearable, Inc.
625 N. North Ct., #320
920-8720
Computer System Design

Zigma Medical Staffing, Inc.
670 N. First Bank Dr.
485-1730
Medical Staffing

NEW NAME/ NEW ADDRESS

Medical Data Concepts, Inc.
800 E. Northwest Hwy., #1080
202-1110
Market Research

Facets of Isis
225 N. Northwest Hwy.
705-6614
Bead/Jewelry

Detterbeck Wealth Management
110 N. Brockway Ste., #330
934-6262
Financial Services

Keais Records Service
630 N. North Ct., #120
963-8551
Sales/Legal Services

Healthy U Vitamin Shop
122 W. Northwest Hwy.
705-8675
Vitamins/Running Shoes

Havoline Xpress Lube
1402 N. Rand Rd.
740-2144
Oil Change

Shays Closet
11 N. Bothwell St.
963-8590
Resale Shop

2013 UPCOMING EVENTS

3/10

Move Clocks Ahead

Sunday, March 10 @ 2 a.m.

Spring ahead one hour and change the time from 2 to 3 a.m. It is also a good time to change batteries in all smoke detectors and carbon monoxide detectors to ensure alarms will sound in an emergency.



3/16

Paint the Town Green

Saturday, March 16
Residents will enjoy an Irish market located under a tent outside Durty Nellies from 8 a.m. to 1 p.m. that features Irish music and dancing plus a variety of food and merchandise. The day will also serve to collect food, clothing and donations to benefit Journeys the Road Home, serving the homeless and near homeless in the North and Northwest Suburbs.

The Paint the Town Green family friendly event will also feature a parade at 11 a.m. For a complete schedule of events and activities, visit www.stpatspalatine.com.



4/3

Blood Drive

Wednesday, April 3

12 to 6 p.m.

The Palatine Board of Health and the Medical Reserve Corps are hosting a Blood Drive on Wednesday, April 3, 2013 from 12 to 6 p.m. at Palatine Village Hall, 200 E. Wood St. in Council Chambers.

5/4
to
5/9

Spring Clean-up Week

Friday, May 3 through

Wednesday, May 8

Take advantage of Palatine's annual spring clean-up by placing garbage bags out in advance of scheduled collection days. All refuse will be collected on your scheduled day. All refuse must be placed out at the curb in the same manner as your regular weekly collection. For more information, call 359-9090 or visit www.palatine.il.us. Search: spring clean-up.

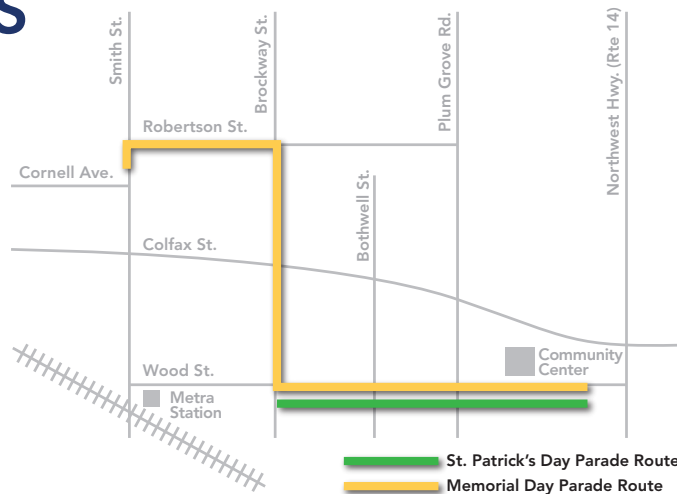
5/4
10/26

Farmers' Market

May 4 to October 26

Saturdays, 7 a.m. to 1 p.m.

It's the 22nd season of the Palatine Farmers' Market stocked with fresh-from-the-farm produce, organic meats and eggs, cheeses, pickles, olives, mushrooms, breads, crepes, cakes and more. May markets bring bedding plants, flowers and



advice from the University of Illinois Master Gardeners. Local musicians will entertain from 10 a.m. to 1 p.m. Located in the train station parking lot at Wood and Smith Streets. For updated information, visit www.palatine.il.us.

5/27

Memorial Day Parade, Ceremonies

Monday, May 27

American Legion Post 690 will honor fallen veterans on this Memorial Day at a wreath laying ceremony at Hillside Cemetery at 9:45 a.m. A parade will follow at 10:15 a.m. at Cornell Avenue and Smith Street and end with a ceremony at the Veterans Memorial in Community Park (Northwest Highway and Wood Street). At 12:15 p.m. there also will be a short memorial service at the Legion Memorial in Towne Square, 150 W. Palatine Rd. For more information or if your group would like to participate in the parade, call the American Legion, 359-1606, after 12 p.m.



5/31

Palatine Police "Cop on Top"

Friday, May 31

5 a.m. - 1 p.m.

Dunkin Donuts, 801 E. Dundee Rd.
Cop on Top of Dunkin Donuts is a statewide fundraising event for the Law Enforcement Torch Run that raises awareness for Illinois Special Olympics athletes. Contact Officer Julieann Ferraro 963-6237 or jferraro@palatine.il.us

6/6

Firefighter Challenge Blood Drive

Thursday, June 6

1 to 7 p.m.

The Palatine Fire Department, Board of Health and Medical Reserve Corps are hosting the Annual Firefighter Blood Donor Challenge on Thursday, June 6, 2013 from 1 to 7 p.m.. The drive will be located at Palatine Fire Station #84 located at 220 W. Illinois Ave. A barbecue will be held at the drive to thank all donors.

6/14

American Cancer Society's Relay For Life Friday, June 14

The American Cancer Society's Relay for Life of Palatine, Rolling Meadows and Inverness, will hold its annual overnight event at Sundling Junior High School, 1100 N. Smith St. Teams within the community raise funds—prior to and at the event—to support cancer research and local programs. For more information, call 368-1166 or visit www.relay-forlife.org/prmiil.



7/3
to
7/7

Palatine Jaycees Hometown Fest 2013

Wednesday, July 3 to

Sunday, July 7

Fireworks: Friday, July 5

Parade: Saturday, July 6

Food, fun, fireworks and a parade. For more information, visit www.palatinejaycees.org.



8/23
to
8/25

Downtown Street Fest

Friday, August 23 to

Sunday, August 25

For more information, visit www.palatinestreetfest.com.



AVOID WORK-AT-HOME AND RESHIPPING SCAMS

In this economy it is hard to resist an opportunity to make some extra money by working from home. Work-from-home signs are everywhere, but is this a legitimate employment path? The Palatine Police Department warns residents to beware, even of job offers posted on reputable employment websites.

Here is a work-from-home scam that may cause residents to not only lose money, but to put them behind bars. The scam is referred to as "reshipping" or "package" forwarding.

Con artists referencing legitimate corporations and physical addresses in their e-mails lure a victim into a false sense of security. Once baited, an unsuspecting "employee" receives packages at no cost with instructions to reship the packages to another address (typically a post office box). Once the packages are shipped, the duped employee reports back to the company to receive a paycheck but does not receive one. Instead, the company cuts all communication with them.

What seems like an easy way to make a living turns out to be a serious crime that may involve local police or even the FBI. The employee becomes an accessory to a crime of receiving and shipping stolen property.

Reshipping or package forwarding creates two victims. First, is the person whose identity was stolen and second, is the person who becomes a package forwarder. When criminals commit identity theft, they know better than to ship the stolen merchandise they have purchased with stolen credit cards and bank drafts to their homes. Re-shippers, also known as mules, unwittingly move merchandise for the thieves to post office boxes. They can't be traced but the victim can.

Residents should not feel embarrassed if they fall victim to this crime. Instead take these actions:

- Don't accept packages for strangers. A scam artist will often use legitimate companies to throw off victims. If it is re-shipping, it is a scam.
- Don't accept packages shipped to names other than your own. (The packages usually are addressed with the victim's name and the reshippers address).
- Stop communicating with re-shipping companies.
- If you have stolen merchandise – do not mail it. Return it to the merchant with an explanation.
- Keep all correspondence (e-mails, faxes, receipts, invoices) related to these scams. It is evidence to prove innocence.
- Contact U.S. Postal Service inspectors, 877-876-2455, to file a complaint.

There are good and reputable work-at-home companies. Do some homework and research them before accepting any job.



Water Quality Protection Starts with Landscape Management

Home landscape management activities have impacts far beyond individual property lines, neighborhoods and town boundaries. Every landscape is linked together by moving ground water. By recognizing this, residents can make a contribution to protect and restore all natural resources, especially local water quality.

Small changes in everyday landscape management activities throughout every season can add up to big changes in water quality protection.

Recycle winter debris. Remove leaves, twigs and branches deposited during the winter. Use this material as the base for a new compost pile or chop it up with a lawn mower or shredder and use it to re-mulch around foundations, under shrubs and trees and in groundcover beds. Do not dump brush and leaves into streams or wetland areas. They add excess nutrients to the system and may cause flooding by blocking water flow.

Sweep up leftover sand from the road or driveway to keep it out of storm drains and local water courses. This sand may contain salt and other pollutants. Don't use it in vegetable gardens, sand boxes or dump it in a pile "out back." Sift it and store it in buckets for next winter.

Rethink the early dose of lawn fertilizer. Avoid "weed and feed" type products that mix pesticides and fertilizers. Put off the first dose of fertilizer until mid-May or apply a thin layer of compost to add organic material to the soil while providing a more balanced dose of nutrients for healthy lawn growth.

Cover bare soil. Re-seed or mulch to prevent soil erosion. Consider dead plants an opportunity to add native species with multiple season interest to the landscape.

Start a landscaping log. Write down what plants are growing well or having problems, what got eaten, and what yard chores take too much time. This will help when making plans for next year.

For more information, visit www.epa.gov/npdes/stormwater or www.epa.gov/nps.

To learn more or report possible illegal discharges to the storm drain system, call the Public Works Department, 705-5200.

Source: *Clean Water Fact Sheet—Non-Point Education for Municipal Officials (NEMO)* and *Sea Grant Connecticut*

RECYCLING PROGRAM PAYS OFF FOR VILLAGE

Since the recycling cart program began in 2006, residents have continued to enthusiastically support it. Groot Industries, Inc. reported a 12 percent average yearly increase in recyclable materials tonnage collected.

This means recycling credits for Palatine. Last year the Village received \$136,000 in recycling credits, which helped to offset refuse rate increases. Recycling is good for the environment and the economy. It has been six years since the Village has raised single family residential rates.



The following recyclable items may be placed in recycling carts for weekly collection: aluminum cans/foil, tin cans, steel and bi-metal cans, clear, green and brown glass and jars, newspapers, magazines, telephone books, mixed papers, corrugated cardboard, single use plastic bottles, plastic containers numbered 1-5 and 7 including caps, rings, lids and labels.

Recycling carts must be placed at the curb with the handles facing towards the house and a minimum of four feet apart from a neighbor's cart. Please help Palatine reduce, reuse and recycle waste.

Residents may upgrade the size of their recycling cart at no charge by contacting Groot at (800) 244-1977. For more information, contact the Environmental Health Division, 359-9090, or visit www.palatine.il.us/residents/refuse-recycling.aspx

PLASTIC BAGS, WHAT TO DO?

Even the most conscientious plastic bag recyclers cannot avoid plastic bags accumulating in their home. Bags are everywhere—holding loaves of bread, hidden in cereal boxes, draped over dry cleaning, protecting newspapers and much more.

There are ways to reuse plastic bags but at some point they need to be properly disposed. Plastic bags and wrappers are not permitted in recycling carts, but fortunately most retail and grocery stores have plastic bag recycle bins.

The Village also has partnered with TREX and its plastic bag recycling program. Residents can drop off plastic bags Monday through Friday, 8 a.m. to 5 p.m., in bins located on the first floor lobby of Village Hall, 200 E. Wood St. For more information, visit www.trexrecycling.com.



BUILDING PERMITS ENFORCE CODES, SAFEGUARD RESIDENT INVESTMENTS

Village building and zoning codes help maintain property values and insure projects are designed and built to current safety standards. Obtaining building permits and having work inspected protects homeowners from contractors and handymen who may want to cut corners.

Whether planning an addition, replacing a fence or renovating a kitchen or bathroom, residents need a building permit to ensure that the hired contractor follows Village codes and safety standards.



Palatine offers two types of permits depending on the scope of the work.

Express permits cover small residential projects and are reviewed in three business days. Typically these projects include driveways, sidewalks and patios, decks, fences, pools, sheds, lawn sprinklers, furnace, air conditioning, water heaters, roof tear offs and electrical amp service upgrading.

Residents will need a standard permit before constructing a home, adding an addition, or remodeling a basement, kitchen or bathroom. These projects will be reviewed in 10 business days and require a pre-submittal meeting with the Building Department prior to submitting a permit.

All contractors renovating, repairing or painting projects that disturb lead-based paint in homes built before 1978 need to be certified by the United States Environmental Protection Agency and must follow specific work practices to prevent lead contamination. For more information, visit www.epa.gov.

Visit www.palatine.il.us/departments/buildingpermits/default.aspx to learn more about the permit process.

Engineering Department Digs Deep to Improve Sewers, Drainage, Roads

It will be another busy summer of construction throughout the Village as the Engineering Department implements storm sewer extensions, water main improvements and roadway enhancements. The Village is committed to \$2.67 million in water and sewer systems and another \$3.36 million in street and road repairs. Capital improvement projects will include:

DRAINAGE IMPROVEMENTS

Storm sewer drain tile replacements and extensions:

Plum Grove Hills Subdivision—
Quentin Road/Medford Drive

Saratoga drainage storm sewer construction along with pavement work

Fairground Park
Sanitary Diversion

East Colfax Street, East Lincoln Street and North Hicks Place

Ditch drainage modifications in areas where flooding may be a problem:

South Williams Drive from Olive to Thomas Streets

Suthers Lane and possibly West Center Road

WATER MAIN IMPROVEMENTS

Existing water main sections on Middleton Avenue will be replaced from Illinois Avenue to Hunting Court

ROADWAY PAVEMENT RECONSTRUCTION

Helen Road from Plum Grove Road to Oak Street

Mill Valley Road from Topanga Drive to Rohlwing Road

Ventura Drive from Mill Valley Road to Juniper Drive

Hydrant Flush Cleans Lines

In late March and early April, depending on the weather, the Public Works Department will begin opening or “flushing” fire hydrants throughout the Village. This process moves water through the pipelines at a fast rate to clean the lines, clear stagnant water and ensure the water the Village delivers to homes is of the highest quality. Residents who perceive this as wasting water can be assured the department will only flush lines when deemed necessary as part of protecting public health by providing safe, quality consumable water.



Meet Your Neighbors at Block Parties

Take some time to meet new families or reacquaint yourself with long-standing neighbors and learn what is happening on the block.

The first step is applying for a block party permit at least two weeks prior to the event. The permit allows neighbors to close off a designated street until 11 p.m.

These events encourage safety for homes and children when neighbors look out for one another. It's helpful if neighbors can spot a stranger on the street and children know where they can turn in the case of an emergency.

Police and Fire Department personnel are usually available to attend block parties to teach youngsters safety habits.

Contact the Village Manager's office, 359-9050, for more information or download a permit application at www.palatine.il.us. Search: block party permit.



Palatine Garage Sale Tips

There is no better way to earn extra cash and unclutter a home at the same time than with a neighborhood garage sale. The Village offers a few guidelines for residents to follow during this entrepreneurial event.

Garage sales do not require a permit, but residents are limited to three sales per year. Signs promoting garage sales may be posted only on the days of the sale. Please remove signs after the sale.

Garage sale days may not exceed 12 hours or run for more than three consecutive days.

RAIL SAFETY PRACTICES SAVE LIVES, BEGINS WITH CITIZENS

Trains—passenger, light-rail and freight—offer some of the most efficient transportation available moving into the 21st century.

The U.S. Department of Transportation projects substantial increases in rail transport over the next three decades. While rail industry and government agencies work together to meet safety challenges, rail safety must begin with citizens obeying simple safety guidelines.



Injuries and fatalities that occur at highway-rail crossings or on railroad property are real, but often preventable. According to Operation Lifesaver, a non-profit railroad safety organization, a person or vehicle is hit by a train roughly every three hours. To prevent collisions, injuries and fatalities on and around railroad tracks and highway-rail grade crossings, residents should not take short cuts across railroad crossings. It is a practice that is dangerous and is trespassing.

Here are some rail safety guidelines to follow—**STAY OFF, STAY AWAY AND STAY ALIVE:**

- The only safe place to cross railroad tracks is at the designated public crossing equipped with flashing red lights or a gate.
- Railroad tracks, trestles, yards and equipment are private property. Trespassers are subject to arrest, criminal prosecution and a fine.
- Do not cross the tracks immediately after a train passes. A second train might be blocked from sight by the first. Trains can come from either direction. Wait until you can see clearly around the first train in both directions.
- Flashing red lights indicate a train is approaching from either direction. It can take a mile or more to stop a train. Never walk around or behind lowered gates at a crossing and do not cross the tracks until the lights have stopped flashing.

To learn more about rail safety, visit Operation Lifesaver at www.oli.org.

CONTACT POLICE DEPARTMENT FOR OVERNIGHT PARKING

When an out-of-town family plans to visit for a few days, there may not be any room in the driveway for extra vehicles. The Village allows residents five grace days for street parking each calendar month. If a resident needs to park a car on the street, call the Police Department's non-emergency number at 359-9000 to request overnight parking permission. Provide the following information:

- Resident's full name, address and phone number
- Location where the vehicle(s) will be parked (if different than resident's address)
- Number of vehicles to be parked
- License plate of each vehicle
- Number of requested days (not more than five days during a calendar month)

Residents who do call the Police Department and receive overnight parking permission are still required to park legally on the street; do not block fire hydrants, park left wheel to curb or where signs prohibit parking.

Residents should also be aware that the Village parking ordinance prevents street parking longer than 15 minutes between the hours of 1 to 6 a.m. except for physicians on emergency calls.

It should be noted that ALL spaces within the commuter lots (except for Lot 11) are open to the general public on nights (after 5 p.m.) and weekends.

PROTECT YOUNG PEDESTRIANS; TEACH GOOD SAFETY HABITS

Parenting is not an easy role, but leading by good example often gives children a sound foundation. Parents who are good pedestrians can protect their children from unfortunate and sometimes fatal accidents.

Everyone knows that preschool children move quickly and are unaware of danger. The Illinois Department of Transportation reports that many children in this age group dart into the paths of cars. Most preschoolers are injured near their homes, on their own street and even in their own driveways.

Preschoolers

Supervise preschoolers at all times. They should never be allowed to cross the street alone. Hold their hand when crossing the street. Do not allow them to play in the driveway; but if they do, first make sure there are no parked cars and set up a physical barrier. Teach children not to play in, around or under cars.

Teach preschoolers by explaining in detail the safe way to cross the street—tell them to always stop at the curb; look and listen for cars; look left for oncoming traffic, look right for oncoming traffic; and then listen for cars approaching. Take the time to follow these steps and repeat the process often with preschoolers.

School Age Children

Although school age children are learning and growing, they still need guidance when playing and walking near traffic. Fatalities among young pedestrians most often occur after school hours. Make sure children know these safety facts.

- A green light means it is time to stop and look for cars before stepping off the curb. Look LEFT-RIGHT-LEFT for traffic, especially for cars turning right on red.
- Cross at a crosswalk, but stop at the curb and look LEFT-RIGHT-LEFT for cars. When it is clear to cross, start walking but continue to look both ways.
- Make sure to stop before crossing the street. Drivers may not see a pedestrian.
- Even at a green light or in the crosswalk, the driver may not see the pedestrian and run a red light or turn right without looking for pedestrians.
- Wearing white does not make a pedestrian visible at night. Carry a flashlight or wear retro-reflective clothing. Always walk facing traffic.
- Cross at the corner or at an intersection.
- Stop at the edge of parked cars, the curb or other vehicles.
- Look for signs that a car is about to move—rear lights, exhaust smoke, sound of motor, wheels turning.

For more information about pedestrian safety, visit www.buckleupillinois.org.



Does your smoke detector work?



In the mid-80s the Illinois Smoke Detector Act became a law that required a minimum of a 9-volt smoke detector within 15 ft. of all sleeping areas. Although codes have changed, this minimum requirement still exists in older homes that have not been renovated.

Today's code for all new construction and renovations requires a smoke detector in each bedroom, on each level of a home and in the hallway within 15 ft. of the sleeping area. Smoke detectors are to be interconnected so if one goes off, they all go off to provide a quicker notice to residents.

How long do smoke detectors last? When should the batteries be replaced? And how often should one test a smoke detector? Most manufacturers give smoke detectors a 10-year life span.

Some new smoke detectors come sealed with a 10-year battery eliminating the need to change the battery. If a smoke detector uses a replaceable battery, the Fire Department recommends replacing the battery when it's time to change the clocks.

Smoke detectors with a 10-year battery work the same way as replaceable battery smoke detectors with an "end of life" signal that is a "chirping" sound.

Finally, the Fire Prevention Division recommends that residents test their smoke detectors monthly. This test ensures that the smoke detector is working properly and can be used in conjunction with a home escape plan. Know what to do if the smoke detector activates, especially in the middle of the night. Everyone in the family should know where to go and who to call in an emergency. Be prepared with a home escape plan.

For more information, contact the Palatine Fire Prevention Division, 359-9029.

www.palatine.il.us



2013 Waste Collection Schedule

Curbside yard waste collection resumes April 1 and continues through December 4.

These are the only holidays that will affect solid waste collection. Post this handy schedule for reference throughout the year.

Week of	Holiday	Collection
May 27	Memorial Day	All one day later
September 2	Labor Day	All one day later
December 25	Christmas	Tues./Wed. one day later

Looking to rent a garbage cart or upgrade the size of your recycling cart, contact Groot at (800) 244-1977.

For more information, contact the Environmental Health Division, 359-9090.



Mailbox Damaged?

Curbside mailboxes hit by Village snowplows or trucks will be repaired by the Village or replaced when necessary at no charge. The Village is not responsible for mailboxes damaged during snowplowing if the mailboxes do not meet Village code.

The Village also will not repair mailboxes damaged by non-Village vehicles. The Village's total liability is limited to the cost of replacing a standard metal mailbox and/or a standard pre-treated post.

If you believe your curbside mailbox or parkway was damaged by a Village snowplow, contact the Public Works Department, 705-5200, between 8 a.m. and 4 p.m., Monday through Friday. All damage needs to be reported as soon as it is noticed.

Landscape Mulch Available

Residents can take advantage of the Village's efforts to maintain a green environment with ground wood mulch created from trees removed throughout the Village.

A layer of ground wood mulch can enhance and protect gardens and shrubs by reducing root damage caused by temperature extremes. Mulch inhibits weeds and protects and keeps the soil healthy. Contact the Public Works Department, 705-5200, in early March to schedule an April delivery. There is a three cubic yard minimum and a ten cubic yard maximum. Cost is just \$12 per cubic yard.

For smaller amounts, visit mulch bins at 550 N. Smith St. Please provide your own shovel and containers.



Purchase Vehicle Stickers

Passenger vehicle stickers for Palatine residents go on sale Wednesday, May 1 and must be displayed before July 1, 2013. The cost is just \$30 for each passenger car until June 30. Stickers purchased after the deadline will incur a \$20 late payment penalty for a total of \$50 per vehicle.

Special status stickers are available for \$6 for senior citizens, holders of handicapped license plates, disabled veterans and active military personnel, but limited to one per household.

Animal tags must be purchased by July 1 for \$7.

VEHICLE STICKERS MAY BE PURCHASED ONLINE

or by mail with the application and payment or in person at Village Hall, 200 E. Wood St., Monday through Friday from 8 a.m. to 5 p.m. and Saturdays in June from 8:30 a.m. until noon. A night drop box is located outside of Village Hall and a drive-up box near the tennis courts on Wood Street is also available.

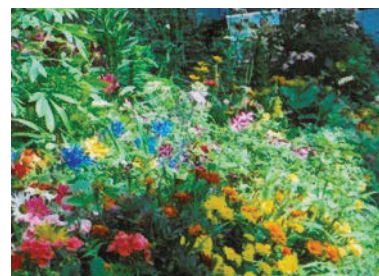
For more information, visit www.palatine.il.us. Search: vehicle stickers.

Nominate Beautiful Properties

Palatine residents are encouraged to walk through neighborhoods and nominate any property location whose curb appeal is an asset to the appearance of the community. The Palatine Beautification

Commission will recognize individuals who work hard to beautify properties with the Hometown Pride Award. You can help by submitting a nomination.

Information and an application form are available at www.palatine.il.us. Search: hometown pride award.



VILLAGE TARGETS STREETS FOR 2013 RESURFACING PROGRAM

Spring marks the start of street resurfacing and road repairs. Palatine relies on the state-of-the-art Micro-PAVER software program to evaluate all streets and rank them at or above an accepted standard.

Proposed streets selected for the 2013 resurfacing program include:

Street Name	From	To
Bombay Way	Clyde Avenue	Westminster Drive
Brandon Court	Smith Street (North)	Smith Street (South)
Chalary Court	Cornell Avenue	Cul-De-Sac
Cornell Avenue	Clyde Avenue	Dead End West
Crescent Avenue	W. Leonard Road	Kenilworth Avenue
Cunningham Drive	Smith Road	King Charles Court
Fawn Lane	Hicks Road	Cul-De-Sac
Franklin Avenue	Poplar Street	Northwest Highway
Gilbert Avenue	Quentin Road	Stuart Lane
Glencoe Road	Quentin Road	Elm Street
Glencoe Road	Elm Street	Cedar Street
Glenn Drive	Carpenter Drive	Sayles Drive
Glenn Drive	Sayles Drive	Anderson Drive
Harrison Street	Wilson Avenue	Palatine Road
High Grove Lane	Gardenia Lane	Cul-De-Sac South
Johnson Street	Cedar Avenue	Greeley Street
Middleton Avenue	Dead End North	Kenilworth Avenue
Plate Drive	Glenn Drive	Clark Drive
Poplar Street	Maple Avenue	Franklin Avenue
Rose Street	Dead End North	Helen Road
Slade Street	Smith Street	Brockway Street
Smith Street	Johnson Street	Dead End South
St. Johns Place	Quentin Road	Cul-De-Sac
Stark Drive	Mill Valley Road	Carpenter Drive
Virn Allen Drive	Northwest Highway	Cul-De-Sac South
Wente Court	Carpenter Drive	Cul-De-Sac
Wilmette Road	Rohling Road	Twin Lakes Drive
Wilson Court	Wilson Street	Cul-De-Sac North
Wilson Street	Harrison Street	Clyde Avenue
Wood Street	Dead End West	Clyde Avenue
Wood Street	Clyde Avenue	Middleton Avenue

For more information about the resurfacing program, visit www.palatine.il.us. Search: annual street resurfacing program.

50/50 Sidewalk Program

The Village annually partners with homeowners in its 50/50 Sidewalk Program for infrastructure repairs. Sidewalks that are uneven, severely cracked, or deteriorated and meet specific safety standards may qualify.

The homeowner's cost is approximately \$58 for a typical sidewalk square. Applications will be accepted on a first come first served basis.

Hazardous Sidewalk Program

A Hazardous Sidewalk Program is specifically designed to identify and eliminate the worst tripping hazards at no cost to the homeowner.

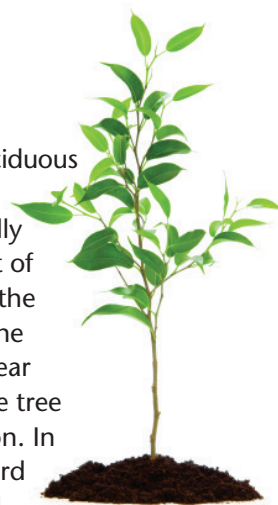
The target area this year is north of Palatine Road, east of Clark Drive, south of Carpenter Drive, and west of Wilke Road.

50/50 Tree Program

The Village and homeowners can partner to add deciduous trees to public parkways by equally sharing in the cost of the trees. In turn, the Village will plant the trees with a one year guarantee and one tree replacement option. In addition to standard sized trees, several varieties are available for planting under power lines.

The Village Arborist will review and approve all planting locations. Trees will be ordered on a first come first served basis. Priority on tree choice will be determined by time and date of receipt of order and payment.

Parkway trees removed by the Village will be replaced at no charge to the homeowner.



For more information on all of the above programs, call the Public Works Department, 705-5200, between 8 a.m. and 4 p.m., Monday through Friday, or visit www.palatine.il.us.



PALATINE VILLAGE HALL WILL BE CLOSED

MONDAY, MAY 27
IN OBSERVANCE
OF MEMORIAL DAY

Village of Palatine
200 E. Wood St.
Palatine, IL 60067

PRSRT STD
U.S. Postage
PAID
Palatine, IL
Permit No. 2855

*****ECRWSS**
POSTAL CUSTOMER
PALATINE, IL

THINKING ABOUT RENTING?

First-time or frequent renters may have many questions and concerns before signing a lease. Here is a helpful guideline for prospective tenants.

Good landlords screen tenants. It demonstrates an owner's intent to provide a safe building and ensures good neighbors. Screening may include background checks, credit history and references.

Inspect the building and apartment before signing a lease

- Check intercoms, locks and lighting in stairways and parking lots.
- Open closets and cabinets—plumbing and pest problems may be found. Turn on faucets, flush toilets, check heating and air conditioning controls.
- Check wall switches and outlets.
- Check window frames and bathroom walls by showers and toilets—moisture and mildew collect here.

- Check smoke and carbon monoxide detectors. Smoke detectors should be on every level and in each bedroom. Carbon monoxide detectors should be installed within 15 ft. of all bedrooms.
- Ask current residents about the property and neighborhood.
- Visit the property during evening hours and weekends to observe activities and noise levels.

Signing the lease

- Carefully read the lease to understand each point listed such as security deposit, cleaning responsibilities, parking, etc. Consult legal counsel with questions.
- Request changes or add riders to the lease now. All legal agreements should be in writing. If reasonable lease modifications cannot be made in writing, be wary.

Move in/out

- A written inspection should be completed at move in and move out. Maintain a copy for your records and have the landlord present during this process if possible.
- Use digital recording equipment to document conditions of the unit to avoid security deposit disputes.

Verify landlord or management company respectability

- Complete a Freedom of Information Act request at the Village Clerk's Office to learn of prior complaints with previous tenants.

- Ask the landlord to provide pest control receipts and ask who is responsible for eliminating pests upon infestation.
- Verify under what conditions the lease may be broken, e.g., a pest problem.

Leasing a new home

- Contact the property owner or management company with maintenance issues.
- Never make repairs without the owner's permission.
- Maintain a new home in a clean and sanitary condition.
- Contact the Palatine Neighborhood Services Division, 202-6673, with any landlord or management unresolved issues.

Verify that the rental property has a current Palatine Rental Dwelling License

- Landlords are required under a Village ordinance to hold an unrevoked rental dwelling license for rental property in Palatine. This helps the Village verify that new rentals meet specific safety regulations.
- Landlords may acquire this license after they have entered into a lease agreement; however, they will need to acquire this license within a reasonable timeframe. To verify that the rental property has an active rental dwelling license, visit www.palatine.il.us/departments/neighborhood_services/active_rental_licenses.aspx

