



VILLAGE of PALATINE



SUMMER 2012

NEW PALATINE VOTING DISTRICTS REFLECT 2010 CENSUS GROWTH

As a result of the United States 2010 Census, the Palatine Village Council has updated its Council District boundaries. Palatine's population grew by over 3,000 residents since 2000 that created an imbalance in population between the six Council Districts.

The Village Council's new district boundaries reflect a balanced population between districts; maintains geographic integrity, maintains neighborhood/subdivision boundaries when possible; and utilizes arterial and collector streets as dividing lines.

In addition to the new Village Council Districts, several other governmental bodies have made adjustments to their boundaries, including the U.S. Congressional Districts, Illinois House and Illinois Senate.

To view or look up your Palatine Council District or view other federal, state, county, or local government maps, visit www.palatine.il.us/maps.

In this ISSUE

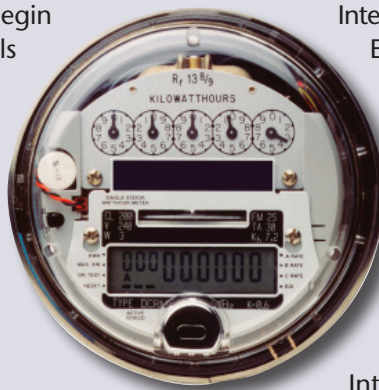
Distracted Driving Not Just Texting.....	3
Upcoming Events.....	4
Water Safety Vital for Safe Summer.....	6
Local Non-Profit Organizations Help	8
2011 Water Confidence Report.....	10
Avoid Storm Water Pollution	14
Recycling Options.....	15

ELECTRICITY SAVINGS TO BEGIN THIS SUMMER

Palatine residents and small businesses will begin seeing significant savings on their electric bills this summer.

Residents and small businesses will pay 4.775 cents per kilowatt-hour for their power supply, or 42 percent below Commonwealth Edison's current rate. The price of Electricity Supply Services makes up about two-thirds of a typical bill while the remaining cost is for delivery. Delivery cost will not change.

After conducting three public meetings, two public hearings, and reviewing eight bids from alternative electric suppliers, a consortium made up of seven suburban municipalities, including Palatine, has selected Integrys Energy Services to supply electricity. In addition to the savings for customers, the Village was able to work with



Integrys to secure 100% renewable energy ("Green Energy") for the residents and small businesses.

While ComEd's rate will continue to change each June and October, Integrys' rates are fixed and guaranteed for July 2012 through June 2013. Residents can expect to see savings on their electric bills beginning in July.

Integrys will send confirmation letters.

ComEd will also send a letter confirming Integrys Energy Services as the electric supplier. ComEd will still provide service, delivery and billing.

Residents and small businesses that opted-out or have an expiring existing contract may participate in the Palatine Electric Aggregation Program. Contact Integrys Energy Services, 877-858-3431.

To learn more about the program, visit www.palatine.il.us

VILLAGE OF PALATINE

200 E. Wood St.
Palatine, IL 60067

www.palatine.il.us
village@palatine.il.us

VILLAGE HALL HOURS

8 a.m. to 5 p.m.,
Monday through Friday
Saturdays (June only)
8:30 a.m. to noon

VILLAGE PHONE NUMBERS

Emergency911
Village Hall.....358-7500
TDD (Emergency).....911
TDD (Non-Emergency)359-9000
Village Action Line705-5200
Community Services359-9042
Fire (Non-Emergency).....202-6340
Police (Non-Emergency)359-9000
Public Works705-5200

Mayor

Jim Schwantz359-9007
jschwantz@palatine.il.us

Village Clerk

Margaret R. Duer359-9051
mduer@palatine.il.us

District 1

Aaron B. Del Mar894-0001
adelmar@palatine.il.us

District 2

Scott Lamerand894-0002
slamerand@palatine.il.us

District 3

Jim Clegg894-0003
jclegg@palatine.il.us

District 4

Greg Solberg894-0004
gsolberg@palatine.il.us

District 5

Kollin Kozlowski894-0005
kkozlowski@palatine.il.us

District 6

Brad Helms894-0006
bhelms@palatine.il.us

Village Manager

Reid Ottesen359-9031
rottesen@palatine.il.us

*All phone numbers are (847) area code
unless otherwise noted.*



PALATINE REMOVES, REPLACES TREES INFECTED BY EMERALD ASH BORER

There has been a noticeable increase in diseased or dead ash trees throughout the Village due to Emerald Ash Borer infestation. The invasive Emerald Ash Borer is on a course to destroy all the ash trees in the community.

The Village has removed and replaced over 400 infected ash trees since 2008. Over 100 trees have been removed within the last six months, with another 400 removals expected by the end of 2012.

Public Works personnel and contractual crews are expected to remove and replace the remaining 4,000 plus ash trees within the next few years.

While the Village is not using chemical treatments, residents may elect this method to prolong the life of a parkway



ash tree at their own expense provided they complete documentation with the Village. Homeowners interested in coordinating this treatment at their own cost may contact Public Works, 705-5200.

The Village has received over \$35,000 in grants over the past two years to help manage tree replacement. Starting this year, the Village will spend approximately \$125,000 to address tree removal and replacement.

A recent review in the management of the infestation reinforced the timely removal of declining and dead ash trees and planting diverse varieties of replacement trees in right-of-way areas.



PalatineE-News

Sign up to receive the latest information on community events, news and alerts at www.palatine.il.us.

WHAT IS DISTRACTED DRIVING?

Distracted driving is any activity that could divert a person's attention away from the primary task of driving. All distractions endanger driver, passenger and bystander safety. Types of distractions include:



- Texting
- Using a cell phone or smartphone
- Eating and drinking
- Talking to passengers
- Grooming
- Reading, including maps
- Using a navigation system
- Watching a video
- Adjusting a radio, CD player or MP3 player

But, because text messaging requires visual, manual and cognitive attention from the driver, it is by far the most alarming distraction.

Illinois launched a new "Drive Now - Text Later Campaign" in 2011 to raise awareness that it is illegal to text while driving on roads and highways. Illinois law prohibits (1) drivers under the age of 19 from using wireless phones while driving—with or without hands-free devices (2) all drivers from text messaging and related activities and (3) motorists from using cellular phones in school speed zones and construction/road maintenance zones.

The best way to end distracted driving is to educate everyone about the danger it poses. Here are a few facts and statistics that are powerfully persuasive. For more information, visit www.distraction.gov.



Key Facts and Statistics

- In the month of June 2011, more than 196 billion text messages were sent or received in the United States, up nearly 50 percent from June 2009.
- Drivers using a cell phone (whether hands-free or not) are four times more likely to get into crashes serious enough to injure themselves.
- Text messaging creates a crash risk 23 times worse than driving while not distracted.
- Sending or receiving a text takes a driver's eyes from the road for an average of 4.6 seconds, the equivalent of driving at 55 mph, the length of an entire football field, blind.
- Headset cell phone use is not substantially safer than hand-held use.
- Using a cell phone while driving, whether it's hand-held or hands-free, delays a driver's reactions as much as having a blood alcohol concentration at the legal limit of .08 percent.
- Driving while using a cell phone reduces the amount of brain activity associated with driving by 37 percent.

Source: distraction.gov.

DISPLAY VEHICLE STICKERS BY JULY 1

Passenger vehicle stickers for Palatine residents are on sale and must be displayed before June 30, 2012. The cost is just \$30 for each passenger car until June 30. Stickers purchased after the deadline will incur a \$20 late payment penalty for a total of \$50 per vehicle.

Special status stickers are available for \$6 for senior citizens, holders of handicapped license plates, disabled veterans and active military personnel, but limited to one per household.

Animal tags must be purchased by June 30 for \$7.

VEHICLE STICKERS MAY BE PURCHASED ONLINE THIS YEAR, by mail with the application and payment or in person at 200 E. Wood St., Monday through Friday from 8 a.m. to 5 p.m. and Saturdays in June from 8:30 a.m. until noon. A night drop box located outside of Village Hall and a drive-up box near the tennis courts on Wood Street are also available.

For more information, visit www.palatine.il.us. Search: vehicle stickers.



2012 UPCOMING EVENTS

CAR SHOWS

Now
to
9/28

Downtown Car Show
Now until September 28
Friday Evenings,
4:30 to 9 p.m.

Palatine Muscle Car Association
features 50 to 150 classic
cars and live entertainment.

Now
to
9/28

Palatine Cruise Night
Now until September 27
Friday Evenings,
5 to 9 p.m.

Features vintage cars next to
Culver's at 1775 N. Rand Rd.

7/28

Another Level Car Show
Saturday, July 28
4 to 9 p.m.

Showcasing over 400 vehicles
of all makes and models in
the 3 floors of the Gateway
Center Parking. For more
information, visit www.anotherlevelcarshow.com

Now
to
10/27

Farmers' Market

Now to October 27
Saturdays, 7 a.m. to 1 p.m.

Visit the 21st season of the
Palatine Farmers' Market.
Local musicians will entertain
from 10 a.m. to 1 p.m. Located
in the train station parking
lot at Wood and Smith Streets.
For updated information, visit
www.palatine.il.us.



6/29
to
7/4

**Palatine Jaycees
Hometown Fest 2012**

Friday, June 29 to
Wednesday, July 4

Food, fun, fireworks and a
parade. For more information,
visit www.palatinejaycees.org

7/28

**Community BBQ
& Pig Roast**

Saturday, July 28
Noon to 11 p.m.

Join the Palatine Area
Chamber of Commerce
for this one day event in
Downtown Palatine



8/24
to
8/26

Downtown Street Fest
Friday, August 24 to
Sunday, August 26

For more information, visit
www.palatinstreetfest.com

8/19

**Community
Movie Night**

Sunday, August 19
6 to 10 p.m.

For more information, visit
www.palatinechamber.com.

9/7

History Crawl

Friday, September 7
5:30 to 8:30 p.m.

The tour encompasses several
locations in downtown
Palatine starting at Bothwell
and Slade streets and ending
at Lamplighter Inn. Docents
describe the history of
each location. For more
information visit www.palatinehistoricalsociety.com

9/8
to
9/9

**Art Affair
Around the Square**

September 8-9
10 a.m. to 5 p.m.



PALATINE/INVERNESS ARTS COUNCIL

The Palatine/Inverness Arts
Council will host its annual
juried art fair, Art Affair
Around the Square, in Towne
Square at Smith Street and
Palatine Road. Admission is
free. For more information,
call 963-6451 or visit www.palatineinverness.org.



9/14
to
9/16

**Palatine Rotary
Oktoberfest**

September 14-16

Celebrate Oktoberfest
in Downtown Palatine.
Attendance is free, and there
will be great German food,
beer, wine and entertainment
all under a protective tent.
Oktoberfest is the principal
fundraising event for the
Rotary Club of Palatine to
fund local charities and non-
profits. For more information,
visit www.palatinerotary.com.

10/20
to
11/3

Scarecrows on Parade
Saturday, October 20 to
Saturday, November 3

Village of Palatine, the Palatine
Beautification Commission
and Palatine Home Depot are
sponsoring Scarecrows on
Parade, a community scarecrow
decorating contest. The
annual community-wide
event is open to any Palatine
business, organization,
association, family or
individual. Scarecrows will
be on display for two weeks
along the Downtown Railwalk
Fence. For more information,
visit www.palatine.il.us.
Search: scarecrows on parade.

Palatine Jaycees Hometown Fest 2012

Hometown Fest will take place at Community Park, located near the intersection of Palatine Road and Northwest Highway. The Fest opens on Friday, June 29 and continues through Wednesday, July 4. Please join us at this family-friendly summer event.

The Schedule of Events is subject to change. For up-to-the-minute information, visit www.palatinejaycees.org.



SCHEDULE OF EVENTS

FRIDAY, JUNE 29

5pm-Midnight	Adult Beverages
5-10pm	Carnival Wristbands
5pm-Midnight	Carnival
5pm-Midnight	Food and Soda

Entertainment:

5-7pm	Wall of Denial
7:30-9:30pm	Diving for Dynamite
10-11:55pm	Mike and Joe

SATURDAY, JUNE 30

8:15-9:30am	Dignitaries Reception
10am	Parade
Noon-6pm	Arts/Crafts Expo
Noon-11:30pm	Adult Beverages
Noon-10pm	Carnival Wristbands
Noon-Midnight	Carnival
Noon-Midnight	Food and Soda
1-6pm	Bingo

Entertainment:

Noon-2pm	The Slam
2:30-4:30pm	Regalia
5-7pm	Pirates over 40
7:30-9:30pm	He Said She Said
10-11:55pm	Hairbanger's Ball

SUNDAY, JULY 1

Noon-6pm	Arts/Crafts Expo
Noon-10pm	Adult Beverages
Noon-10pm	Carnival Wristbands
Noon-10pm	Carnival
Noon-10pm	Food and Soda
Noon-7pm	Life Source Blood Drive
Noon-2pm	World Record Breaking
2pm	Hometown Toss

Entertainment:

Noon-2pm	Stay Tuned
2:30-4:30pm	Whiskey Tango
5:30-7:30pm	Stockwood
8-10pm	Piano Man

MONDAY, JULY 2

3-6pm	Book Mobile
5-10pm	Adult Beverages
5-10pm	Carnival Wristbands
5-10pm	Carnival
2:30-4:30pm	Special Needs Carnival
2:30-10pm	Food and Soda

Entertainment:

5:30-7:30pm	Open Mic
8-10pm	Twenty Over

TUESDAY, JULY 3

Noon-Midnight	Adult Beverages
Noon-5:00pm	Carnival Wristbands
Noon-Midnight	Food and Soda
9:30pm	Fireworks

Entertainment:

Noon-1:30pm	Castle Chiropractic Band
2-4pm	Darryl Markette
4:30-6:30pm	New Vinal Experience
7-9pm	Mellencougar
10-11:55pm	Bucket Number 6

WEDNESDAY, JULY 4

Noon-5pm	Adult Beverages
Noon-5pm	Carnival Wristbands
11am-2pm	Family Day
Noon-5pm	Food and Soda



Mike and Joe



Hairbanger's Ball





Life Jacket Program Protects Residents

In an effort to keep residents safe while they enjoy water activities, the Palatine Fire Department sponsors a free life jacket rental program.

Residents may reserve and pick up life jackets for children who weigh up to 90 lbs. Jackets may be reserved for one day or one week. Special permission is needed if a longer rental time is required.

Residents may pickup and return jackets at the following locations:

Station 81—1215 N. Quentin Rd., bin at the north side of entry

Station 82—1475 Hicks Rd., bin at south side door

Station 83—987 East Palatine Rd., bin at south side entry

Station 84—220 West Illinois Ave., bin at east side entry

Station 85—39 East Colfax St., bin at rear of station

For more information, contact Firefighter Kevin Burris, 202-6340, or visit www.palatine.il.us Search: life jackets.

WATER SAFETY VITAL FOR SAFE SUMMER

Community pools are open for the summer and weekend trips to the lake are on the vacation schedule, but everyone should be aware that the second leading cause of childhood accidental death is drowning. This year take the steps to be safe.

Learn to swim!

Never swim alone!

Follow pool rules!

If someone in the water is in trouble and you cannot swim—reach, throw, but don't go!

Adults please stay close, be alert and watch children in and around swimming pools and water.

Never leave a child unattended.

Keep children away from pool drains, pipes and other openings to avoid entrapments.

Have a telephone nearby. If distracted by a phone call or restroom visit, remove children from the pool.

Look for a missing child in the pool or spa first.

Learn and practice water safety skills. Share safety instruction with family, neighbors and friends. Teach children basic water safety tips.

Learn how to perform CPR and update those skills regularly.

Understand life-saving basics for a pool emergency.



Install appropriate pool and spa equipment.

Install a four-foot or taller fence around the pool or spa and use self-closing and self-latching gates.

Utilize a lockable safety cover on the spa.

Install door alarms and always use them. For additional protection, install window guards on windows facing the pool.

Ensure that any pool and spa has compliant drain covers.

Consider a surface wave or underwater alarm.

Floating toys or plastic inflatable water wings are not life jackets and should not be substituted for adult supervision. Children under the age of six should wear a U.S. Coast Guard approved life vest around water at all times.

NOMINATE BEAUTIFUL PALATINE PROPERTY FOR 2012 HOMETOWN PRIDE AWARD

The 2012 Hometown Pride Award will honor residential and business properties in Palatine that exemplify beautiful landscaping and exceptional curb appeal.

In order to expedite the judging process, one 4"x 6" photograph taken within the last 30 days must accompany the nomination. Simply fill out the form, enclose a photograph, and return both to the Department of Public Works by Friday, July 20. Judging will take place on Monday, July 23.

Judges are looking for "curb appeal," and will be considering ONLY the front of the property visible from the street. Winners will be notified by mail shortly thereafter. For more information and to download an entry form, visit www.palatine.il.us. Search: hometown pride award.

FARMERS' MARKET OFFERS ORGANIC FOODS, MANY POPULAR VENDORS UNTIL OCT. 27

It's prime season at the Farmers' Market. Farmers bring vegetables from Illinois, Wisconsin and Indiana with much of the produce organically grown. Enjoy mouth-watering peaches, cherries, apricots and berries from Michigan.

Purchase earth-friendly and healthy beef, chicken, pork, lamb, bison and fresh eggs—all raised without hormones and antibiotics.

In addition, the knife sharpeners will sharpen knives, scissors and mower blades while residents enjoy a breakfast sandwich, donuts and coffee and explore the floral bouquets, baked goods, cheese, gourmet condiments, international spices, pickles, olives, natural soaps, cheesecakes, pet treats and homemade berry pies. University of Illinois Master Gardeners will be on hand to answer gardening questions.

Visit the Sister Cities booth to learn about Fontenay-le-Comte, Palatine's French Sister City, and to sample French sea salt and recipes. There is a weekly raffle for a chance to win a basketful of fresh produce.

The market, located in the train station parking lot at Wood and Smith streets, will be open every Saturday from 7 a.m. to 1 p.m. and closes October 27. Visit us at, www.palatine.il.us, or on Facebook and Local Harvest.



FRENCH MAYOR TO VISIT STREET FEST

Monsieur Hughes Fourage, mayor of Fontenay-le-Comte, France, Palatine's Sister City, has accepted Mayor Jim Schwantz's invitation to visit the Village and attend Street Fest, Aug. 24-26. Mayor Fourage, his wife and daughter will meet Palatine residents and visit area attractions during a two-week stay.

The Fourages are interested in American municipal government and will tour Palatine Village Hall, Police Headquarters, Fire Stations and the Public Works facilities. Mayor Schwantz will officially welcome them at a Village Council meeting on Monday, Aug. 20 at 7 p.m. In addition to Street Fest, they will attend the Farmers' Market on Saturday, Aug. 25 at the Sister Cities Booth.



Other planned activities include a visit to Northwest Community Hospital and tours of the Palatine Library and Palatine and Salt Creek Park Districts.

Fontenay is honored with the title "sports city" by the French government and is also a cultural center that hosts celebrations of music, dance, history and the arts.

To learn more about Fontenay-le-Comte and Sister Cities, visit www.palatinesistercities.org



Meet Your Neighbors at Summer Block Parties

Take some time this summer to meet new families or reacquaint yourself with long-standing neighbors and learn what is happening on the block.

Palatine encourages neighbors to enjoy the summer at organized block parties. The first step is applying for a block party permit at least two weeks prior to the event. The permit allows neighbors to close off a designated street until 11 p.m.

These events encourage safety for homes and children when neighbors look out for one another. It's helpful if neighbors can spot a stranger on the street and children know where they can turn in the case of an emergency.

Police and Fire Department personnel are usually available to attend block parties to teach youngsters safety habits.

Contact the Village Manager's office, 359-9050, for more information or download a permit application at www.palatine.il.us. Search: block party permit.



Palatine Garage Sale Tips

There is no better way to earn extra cash and unclutter a home at the same time than with a neighborhood garage sale. The Village offers a few guidelines for residents to follow during this entrepreneurial event.

Garage sales do not require a permit, but residents are limited to only three sales per year. Signs promoting garage sales may be posted only on the days of the sale. Please remove signs after the sale.

Garage sale days may not exceed 12 hours or run for more than three consecutive days.

Alert Citizens May Reduce Spread of West Nile Virus

Summer's warm weather encourages many outdoor activities, but the Village of Palatine reminds residents to remain alert to the potential threat of the West Nile virus spread by infected mosquitoes.

Citizens can help minimize the spread of the deadly West Nile virus by reporting dead birds and/or standing water to the Village and Northwest Mosquito Abatement District.

Dead Bird Reporting

Dead bird reporting assists the prevention, monitoring and control measures to minimize the spread of the virus.

It is important to report any perching birds (crows, blue jays, grackles, robins, cardinals, sparrows, starlings and finches) that have been dead for less than 24 hours. Perching birds are the only birds currently being collected for testing and must be in good condition with no signs of attack or decay.

Staff will identify and determine if a bird will be tested. Birds not collected should be double bagged and disposed of in the garbage. Avoid handling any dead birds directly and always wash hands with soap and water.

Standing Water Reporting

To eliminate mosquito breeding, report any water sources on or near property that hold water for more than seven days. In addition, report properties that fail to remove standing water after seven days from items such as tires, swimming pools, birdbaths, boats, clogged gutters and containers.

To report a dead bird or standing water, call the Environmental Health Division, 359-9090, or visit www.palatine.il.us. Search: mosquito. Or call the Northwest Mosquito Abatement District, 537-2306, or visit www.nwmadil.com.

PALATINE RESIDENTS HELP EACH OTHER;

Non-profit organizations in Palatine are making a significant difference in the lives of residents through unique partnerships with government agencies, corporations and small businesses, schools and individual volunteers. Varied Village populations with diverse needs receive positive encouragement and support from these dedicated organizations and individuals.



Palatine Township Food Pantry

The Food Pantry is a source of non-perishable food for senior citizens, disabled persons, and low-income families and individuals who reside in Palatine Township. The Pantry assists approximately 322 families a month and is open Monday and Wednesday from 11 a.m. to 4 p.m. and the third Saturday of each month from 8:30 a.m. to noon.

Most of the Pantry's food comes from donations by individuals and food drives. Right now the Pantry needs paper products such as toilet paper, tissue and paper towels, peanut butter and jelly, tuna, macaroni and cheese, canned fruit, juice, cereal, skillet meals, cleaning supplies, and health and beauty aids.

Food drives provide a good supply source to keep the shelves stocked, especially in the summer. Residents and organizations that are considering a food drive should contact the Pantry first, 358-6121, to learn what items are most needed.

The Pantry accepts all non-perishable food and designated monetary donations at the Palatine Township Center, 721 S. Quentin Rd., Monday through Friday from 8:30 a.m. to 4 p.m. and Saturday from 8:30 a.m. to noon.

Nurses Club Lending Closet

Do you need a wheelchair or a pair of crutches for a short period of time? The Palatine Nurses Club

Lending Closet offers free use of medical equipment for up to six months to Palatine Township residents.

The Closet, located in the lower level of Village Hall, 200 E. Wood St., is open on Wednesday and Saturday from 10 to 11:30 a.m. Volunteer nurses are available to help residents select the proper equipment that includes wheelchairs, crutches, walkers, canes, bathing aids and commodes.

Equipment donations are always welcome. For more information, call 359-7650 or 934-3016.



The Yellow Ribbon Support Group

The Yellow Ribbon Support Group sends care packages to members of the United States Armed Forces serving overseas. Some 30 volunteers from throughout the northwest suburbs work with churches and corporations to remember the men and women freedom fighters.

In nine years, the organization has sent deployed military men and women approximately 23,100 packages containing toiletry items, snacks, batteries, white socks, cookies, candy and notebook paper.

Each package also contains a Beanie Baby or small teddy bear with a tag attached reading, "Please give me to a local child for love" to help



MAKE A DIFFERENCE

troops create goodwill with local families. Each deployed military man and woman receives at least two boxes.

The Yellow Ribbon Support Group holds two drives per year. In the spring, the group conducts Operation Cookie Drop by partnering with Girl Scouts to collect boxes of Girl Scout cookies. In the fall, the group collects Halloween candy and has partnered with local dentists to collect unused candy from patients. Last year they collected 5,200 pounds of candy to send to the troops.

Youth groups and corporations assist the organization by holding drives to collect items as they fulfill community service projects. Items are sorted, packaged for mailing and taken to local churches whose members pay flat-rate shipping.

Donations of items can be dropped off at Village Hall, 200 E. Wood St., Room 263. Monetary donations can be mailed to the Yellow Ribbon Support Group, care of BMO Harris Bank Palatine, 50 N. Brockway St., Palatine, IL 60067.

For more information, contact Pat and Mac McCoy at rmccoy8627@comcast.net, or visit www.yellowribbonSG.org.

Palatine Opportunity Center

The Palatine Opportunity Center (POC) welcomes families and individuals in need to the community by connecting them with local resources and providing a pathway for their integration and success. Last year, over 22,000 clients used the Center's services.

Located at 1585 N. Rand Rd. in Palatine, the POC is a hub for agencies that offer clients basic health care through the Cook County Vista Health Center, library services through the Palatine Public Library Districts, counseling and support services, and Harper



Community College classes such as English language, citizenship, computer technology and workplace skills. The Palatine Police Department provides social work services and collaborates on programs for at-risk youth. Childcare is available for POC clients free of charge.

Through a unique collaboration, Northwest Community Healthcare and the not-for-profit Palatine Opportunity Center partner to provide this resource center where the community can access valuable and essential services needed to improve quality of life.

Programs and services that are offered or supported by POC include:

- After School Program
- Behavioral Health Navigator
- Community Nursing
- iCompete
- Leadership Training
- Learning Lab
- Northeast Palatine Summer Camp
- Plaza Comunitaria
- Promotoras de Salud

For more information contact Kathy Millin, 776-9500, x222, or visit www.palatineopportunitycenter.org



VILLAGE WELCOMES NEW BUSINESSES

AUTOMOBILE SALES/SERVICE

Buddy's Auto Care
1225 W. Northwest Hwy.
963-6363
Auto Repair

BEAUTY SALONS/NAILS

Xtina's Lash Extensions
317 W. Colfax St., #101
708-890-2920
Beauty Consulting

CONSULTANTS

Allplans Consulting Inc.
1540 E. Dundee Rd., #245
630-881-3234
Employee Benefits

Independent Network Consulting Inc.

887 E. Wilmette Rd., Ste. I
204-6244
Computer Service

SERVICES

CNGM Pictures
434 E. Northwest Hwy., #6
312-278-3771
Film Production

Driving for Teens

1590 N. Rand Rd., #203
991-9600
Driving School

Martial Arts

157 W. Northwest Hwy.
372-5336
Martial Arts

Tracy Joy Photography

117 W. Slade St., #103
902-6141
Photography

RETAIL

Victory Leathers
104 S. Northwest Hwy.
907-9435
Leather Shop

RESTAURANT

Alley 64 Bar & Grill
2001 N. Rand Rd., Ste. A
934-6408
Restaurant/American

Shan Grill

1910 N. Rand Rd.
358-1900
Indian Food

RELOCATED BUSINESSES

Goldmax
776 E. Dundee Rd.
Gold Buyers

Manpower

800 E. Northwest Hwy., #526
358-8711
Staffing Agency

Princesses Boutique

1204 E. Dundee Rd.
496-7219
Bridal Shop

All phone numbers are (847) area code unless otherwise noted.



2011 VILLAGE OF PALATINE WATER CONFIDENCE REPORT

Source Water Contaminants

Drinking water, including bottled water, may be reasonably expected to contain at least small amounts of some contaminants. The presence of contaminants does not necessarily indicate that water poses a health risk.

Contaminants that may be present in source water include:

- **Microbial Contaminants**, such as viruses and bacteria, which may come from sewage treatment plants, septic systems, agricultural livestock operations and wildlife;
- **Inorganic Contaminants**, such as salts and metals, which may be naturally occurring or result from urban storm water runoff, industrial or domestic wastewater discharges, oil and gas production, mining or farming;
- **Pesticides and Herbicides**, which may come from a variety of sources such as agriculture, urban storm water runoff and residential uses;
- **Organic Chemical Contaminants**, including synthetic and volatile organic chemicals, which are by-products of industrial processes and petroleum production, and also may come from gas stations, urban storm water runoff and septic systems; and
- **Radioactive Contaminants**, which may be naturally occurring or be the result of oil and gas production and mining activities.

In order to ensure that tap water is safe to drink, the EPA prescribes regulations which limit the amount of certain contaminants in water provided by public water systems. FDA regulations establish limits for contaminants in bottled water which must provide the same protection for public health.

Some people may be more vulnerable to contaminants in drinking water than the general population. Immuno-compromised persons such as persons with cancer undergoing chemotherapy, persons who have undergone organ transplants, people with HIV/AIDS or other immune system disorders, some elderly and infants can be particularly at risk from infections. These people should seek advice about drinking water from their health care providers. EPA/CDC guidelines on appropriate means to lessen the risk of infection by Cryptosporidium and other microbial contaminants are available from the Safe Drinking Water Hotline 1-800-426-4791.

The Village of Palatine is pleased to present a summary of the water quality report to residents based on 2011 results. The Safe Drinking Water Act (SDWA) requires that utilities issue an annual "Consumer Confidence Report" (CCR) to customers in addition to other notices that may be required by law. This report details where Village water comes from, what it contains, and the risks water testing and treatment are designed to prevent. The Village is committed to providing residents with the safest and most reliable water supply. From time to time, water issues are addressed at Village Council meetings. Meetings are held on the first, second and third Monday of each month at 7 p.m. at 200 E. Wood St., Palatine, IL.

NATIONAL PRIMARY DRINKING WATER REGULATION COMPLIANCE

No violations were recorded for the Village of Palatine during this CCR reporting period. (Facility # IL0312340).

SOURCE OF DRINKING WATER

The sources of drinking water (both tap water and bottled water) include rivers, lakes, streams, ponds, reservoirs, springs, and groundwater wells. As water travels over the surface of the land or through the ground, it dissolves naturally occurring minerals and, in some cases, radioactive material, and can pick up substances resulting from the presence of animals or from human activity.

SOURCE WATER (SW) INFORMATION

Source Water Name		Type of Water
CC-01	FF IL0315300 TP01	SW
South Pumping Station	Lake Water	
CC-02	FF IL0315300 TP01	SW
North Pumping Station	Lake Water	

SOURCE WATER ASSESSMENT

A Source Water Assessment summary is included below for your convenience.

The Illinois EPA considers all surface water sources of community water supply to be susceptible to potential pollution problems. The very nature of surface water allows contaminants to migrate into the intakes with no protection only dilution, which is the reason for mandatory treatment for all surface water supplies in Illinois.

All three of Evanston's intakes are located far enough offshore that shoreline impacts are not considered a factor on water quality. However, at certain times of the year the potential for contamination exists due to the proximity of the North Shore Channel and wet-weather flows. In addition, the proximity to a major shipping lane adds to the susceptibility of these three intakes.

Water supply officials from Evanston are active members of the West Shore Water Producers Association. Coordination regarding water quality situations (i.e., spills, tanker leaks, exotic species, etc.) is frequently discussed during the association's quarterly meetings. Lake Michigan, as well as all the Great Lakes, has many different organizations and associations that are currently working to either maintain or improve water quality. Since the predominant land use within Illinois' boundary of Lake Michigan watershed is urban, a majority of watershed protection activities in this document is aimed at this purpose.

PALATINE'S 2011 REGULATED CONTAMINANTS DETECTED

LEAD AND COPPER, DATE SAMPLED: 08/01/2011

If present, elevated levels of lead can cause serious health problems, especially for pregnant women and young children. Lead in the drinking water is primarily from materials and components associated with service lines and home plumbing.

The Village is responsible for providing high-quality drinking water, but cannot control the variety of materials used in plumbing components. When water has been sitting for several hours, residents can minimize the potential for lead exposure by flushing their tap for 30 seconds to two minutes before using water for drinking or cooking.

If any resident is concerned about lead in his or her water, they may wish to have their water tested. Information on lead in the drinking water, testing methods, and steps one can take to minimize exposure is available from the Safe Drinking Water Hotline 1-800-426-4791 or visit www.epa.gov/safewater/lead.

Definitions:

(A) Action Level (AL): The concentration of a contaminant which, if exceeded, triggers treatment or other requirements which a water system must follow.

Action Level Goal (ALG): The level of a contaminant in drinking water below which there is no known or expected risk to health. ALGs allow for a margin of safety.

WATER QUALITY TEST RESULTS

Maximum Contaminant Level (MCL): The highest level of a contaminant that is allowed in drinking water. MCLs

are set as close to the Maximum Contaminant Level Goal as feasible using the best available treatment technology.

Maximum Contaminant Level Goal (MCLG): The level of a contaminant in drinking water below which there is no known or expected risk to health. MCLGs allow for a margin of safety: **mg/l:** milligrams per litre or parts per million - or one ounce in 7,350 gallons of water; **ug/l:** micrograms per litre or parts per billion - or one ounce in 7,350,000 gallons of water; **na:** not applicable; **Av:** regulatory compliance with some MCLs is based on running annual average of monthly samples.

Maximum Residual Disinfectant Level (MRDL): The highest level of disinfectant allowed in drinking water.

Maximum Residual Disinfectant Level Goal (MRDLG): The level of disinfectant in drinking water below which there is no known or expected risk to health. MRDLGs allow for a margin of safety.

REGULATED CONTAMINANTS

The state requires monitoring of certain contaminants less than once per year because the concentrations of these contaminants do not change frequently. See MCL Statement on page 12. AL measurements are: **ppm:** parts per million; **ppb:** parts per billion; **ppt:** parts per trillion; **pCi/l:** picoCuries per liter (measurement of radioactivity). The MCL level for TTHM and HAA5 is 80 ppb and 60 ppb respectively and is currently only applicable to surface water supplies that serve more than 10,000 people. (See Evanston report on page 12 for more details.)

LEAD AND COPPER

Lead MCLG	Lead Action Level (AL)	Lead 90th Percentile	# Sites Over Lead AL	Copper MCLG	Copper Action Level (AL)	Copper 90th Percentile	# Sites Over Copper AL	Likely Source of Contamination
0	15 ppb	<3.01 ppb	0	1.3 ppm	1.3 ppm	<0.094 ppm	0	Corrosion of household plumbing systems; erosion of natural deposits

Radioactive Contaminants	Collection Date	Highest Level Detected	Range of Levels Detected	MCLG	MCL	Units	Violation	Likely Source of Contamination
Gross alpha excluding radon and uranium	08/03/10	13.3	0 – 13.3	0	15	pCi/L	N	Erosion of natural deposits

REGULATED CONTAMINANTS

Disinfectants & Disinfection By-Products	Collection Date	Highest Level Detected	Range of Levels Detected	MCLG	MCL	Units	Violation	Likely Source of Contaminant
TTHMs [Total Trihalomethanes]	Quarterly	28.0	3 - 42	N/A	80	ppb	No	By-product of drinking water chlorination
Total Haloacetic Acids (HAA5)	Quarterly	14.0	10 -18	N/A	60	ppb	No	By-product of drinking water chlorination
Chlorine	1/10-12/10	.70	0.68 - 0.78	MRDLG=4	MRDL=4	ppm	No	Water additive used to control microbes

Not all sample results may have been used for calculating the highest level detected because some results may be part of an evaluation to determine where compliance sampling should occur in the future.



EVANSTON'S ANNUAL DRINKING WATER QUALITY REPORT - IL0310810

This Annual Water Quality Report covers the period from January 1 to December 31, 2011. It is intended to provide residents with important information about their drinking water and the efforts made by the EVANSTON water system to provide safe drinking water. The source of drinking water used by EVANSTON is surface water.

LEAD AND COPPER DATE SAMPLED: 2011

Definitions:

Action Level (AL) and Action Level Goal (ALG)
See definitions A, page 11.

MCL Statement: The maximum contaminant level (MCL) for TTHM and HAA5 is 80 ppb and 60 ppb respectively and is currently only applicable to surface water supplies that serve 10,000 or more people. Some people who drink water containing trihalomethanes in excess of the MCL over many years may experience problems with their livers, kidneys, or central nervous systems, and may have increased risk of developing cancer.

REGULATED CONTAMINANTS See page 11.

Turbidity is a measurement of the cloudiness of the water caused by suspended particles. It is monitored because it is a good indicator of water quality and the effectiveness of the filtration system and disinfectants.

TOTAL ORGANIC CARBON

The percentage of Total Organic Carbon (TOC) removal was measured each month and the system met all TOC removal requirements set by IEPA, unless a TOC violation is noted in the violations section.

For more information on this report, contact Jim Vlcek, Palatine Utilities Coordinator, 705-5200, or Kevin Lookis, Evanston Utilities Coordinator, 866-2942.

Este informe contiene informacion muy importante sobre el agua que usted bebe. Traduzcalo o hable con alguien que lo entienda bien.



LEAD AND COPPER

Lead & Copper	Date Sampled	MCGL	Action Level (AL)	90th Percentile	# Sites Over (AL)	Units	Violation	Likely Source of Contamination
Copper	2011	1.3	1.3	0.18	0	ppm	N	Erosion of natural deposits; leaching from wood preservatives; corrosion of household plumbing systems
Lead	2011	0	15	4.2	0	ppb	N	Corrosion of household plumbing systems; erosion of natural deposits

REGULATED CONTAMINANTS

Disinfectants & Disinfection By-Products	Collection Date	Highest Level Detected	Range of Levels Detected	MCLG	MCL	Units	Violation	Likely Source of Contaminant
TTHMs [Total Trihalomethanes]	2011	25	10.8 - 36	N/A	80	ppb	No	By-product of drinking water chlorination
Total Haloacetic Acids (HAA5)	2011	9	5.8 - 11.8	N/A	60	ppb	No	By-product of drinking water chlorination
Chlorine	2011	.40	0.37 - 0.50	MRDLG=4	MRDL=4	ppm	No	Water additive used to control microbes

State Regulated Contaminants	Collection Date	Highest Level Detected	Range of Levels Detected	MCLG	MCL	Units	Violation	Likely Source of Contaminant
Sodium*	2009	7	7.1 - 7.1	N/A	N/A	ppm	No	Erosion of naturally occurring deposits; used in water softener regeneration

There is not a state or federal MCL for sodium. Monitoring is required to provide information to consumers and health officials who are concerned about sodium intake due to dietary precautions. If you are on a sodium-restricted diet, you should consult a physician about this level of sodium in the water.

TURBIDITY

Limit (Treatment Technique)	Lowest Monthly % Meeting Limit	Violation	Source
0.06 NTU	100	No	Soil Runoff
Limit (Treatment Technique)	Highest Single Measurement	Violation	Source
1 NTU	0.4 NTU	No	Soil Runoff

PUBLIC WORKS SOLVES WATER ISSUES

Although the water system is designed to operate without problems, occasionally a situation may arise which requires attention.

- If you ever see water bubbling out of the ground or notice an unusual amount of water standing in an otherwise dry area, contact the Department of Public Works. These are indications that there may be a water main break.
- The Village is responsible for the main water line that runs in front of a home. The service line that runs from the main line to the water meter is the homeowner's responsibility. If you need to have the water to your home turned off and cannot turn it off at the meter, call Public Works to turn the water off at the house service line in the parkway.
- Water pressure is always kept at an even level. Problems with an individual faucet are usually due to a clogged line. However, if there are water pressure problems throughout the house, call Public Works for a service technician to inspect your water meter and to help identify the source of the problem.



Sprinkling Restrictions

Water can no longer be thought of as an unlimited natural resource. In order to help conserve water during peak-demand summer months, the Village of Palatine has an ordinance prohibiting lawn sprinkling from noon until 6 p.m. from May 15 through September 15.

SUPPLIER: ODD WATER TASTE POSES NO HEALTH THREAT

Communities which draw on Lake Michigan for their drinking water have been hearing complaints from residents that their water has an odd musty taste. The musty taste is elusive and subtle. On a daily basis, it can shift from one water treatment plant to another, one town to another.

Officials at the Evanston Water Facility have assured us that the water is safe to drink and our local testing reaffirms this fact. The musty, moldy taste comes from at least two compounds which are produced by the decaying of dead algae, the tiny drifting plants that are found in every body of water.

Decaying algae and other micro-organisms give off a variety of organic chemical compounds. None of those decay products have been found to pose a health threat. They may not be dangerous, but are powerful in the effect they produce. There is a straight forward way to treat raw lake water to get rid of most of the odd taste.

Finely ground particles of carbon are added to the lake water as soon as it arrives in the treatment plant. Carbon attacks molecules which adhere to it like steel to a magnet. The carbon settles out of the water later in the treatment process, taking with it the organisms that are causing the musty taste.

With conditions in the lake changing unpredictably, the art behind removing the musty taste lies in matching the dosage of carbon with the magnitude of the problem.



Initiate Measures to Conserve Water

There are 11 million people in Illinois, each using an average of 160 gallons of water per day. If each of us takes some small steps to use less water, it can make a big difference in conserving this precious natural resource.

- Use as little water as possible when washing your car; use a bucket instead of letting the hose run. Water lawns and gardens early in the morning to minimize water loss from evaporation.
- Turn off water in sinks, showers, and baths when not using them. Repair all leaks immediately. Install a low-flush or air-assisted toilet. Buy water-efficient appliances.
- Install shower restrictors to reduce the amount of water used. Report accidental spills or illegally dumped waste to the Illinois Environmental Protection Agency.



Rain Barrels for Sale

The Metropolitan Water Reclamation District of Greater Chicago is selling rain barrels to Cook County homeowners as part of an effort to collect and reuse storm water. The barrels are available on line for \$58 plus tax. It is part of the water agency's green infrastructure initiative and supports managing storm water and reducing water pollution.

Specifications:

- Capacity – 55 gallons
- Diameter – Approximately 21 in.
- Height – Approximately 34 in.
- Colors – Blue, Black, Terra Cotta or Grey

For more information, visit www.mwrd.org or call 312-751-5600.

Village Program Clears Sidewalks of Tree Obstructions

The Palatine Public Works Department will inspect and remove any tree limbs or bushes that may hinder the safe passage of pedestrians along Palatine sidewalks as part of their normal trimming efforts this summer.

Initiated last year by the Village Council, the sidewalk obstruction program allows Village work crews to remove low lying limbs and bushes whether on public right-of-way or private property, at no cost to the abutting property owner.

Residents are encouraged to check their trees and to remove any low lying limbs or branches which infringe within a seven-foot vertical height above the sidewalk.

Please call the Public Works Department, 705-5200, to report any low lying branch or bush which overhangs the sidewalk.

AVOID STORM WATER POLLUTION; PROTECT YOUR HEALTH, ENVIRONMENT



Storm water sweeps across surfaces as it picks up debris, chemicals, dirt and pollutants that will eventually flow into a storm sewer system or directly to a lake, stream, river or wetland. Anything that enters a storm sewer system is discharged untreated into our valuable bodies of water. Polluted runoff is the greatest threat to clean water.

Practice healthy household habits and keep common pollutants out of storm water. Help protect our streams, rivers, wetlands and coastal waters. Share these healthy habits with your neighbors!

Automotive

- Use a commercial car wash or wash cars on unpaved surfaces to minimize the amount of soapy water flowing into the storm drain.
- Check vehicles, boats, machinery and equipment for leaks and spills. Repair immediately. Clean up spilled fluids with absorbent material like kitty litter or sand. Don't rinse spills into storm drains and properly dispose of the absorbent material.
- Recycle used oil and automotive fluids at participating service stations. Keep chemicals out of storm drains and out of trash cans.

Lawn and Garden

- Use pesticides and fertilizers sparingly. Follow recommendations. Avoid application on rainy days; chemicals will be washed into local streams.
- Select native plants and grasses that are drought and pest-resistant. They require less water, fertilizer and pesticides.
- Sweep up yard debris, rather than hosing areas down. Compost or recycle yard waste.
- Don't overwater. Water during the cool times of the day, and don't let water run off into the storm drain.
- Cover piles of landscaping dirt and mulch to prevent pollutants from blowing or washing off into local bodies of water. Vegetate bare spots to prevent erosion.

Home Improvement

- Before beginning outdoor projects, clear the nearest storm drains from debris and other materials.
- Sweep up and properly dispose of construction debris.
- Use hazardous substances like paints, solvents and cleaners in the smallest amounts possible; follow label directions. Clean up spills immediately; dispose of waste safely. Store substances properly to avoid leaks and spills.
- Always use nontoxic, biodegradable, recycled and recyclable products.
- Clean paint brushes in a sink. Filter and reuse paint thinner when using oil-based paints. Properly dispose of excess paints through a household hazardous waste collection program, or donate unused paint to local organizations.

Only rain down the drain! Storm drains connect to bodies of water! To report possible illegal discharges to the storm drain system, call Public Works, 705-5200. For more information, visit www.epa.gov/npdes/stormwater or www.epa.gov/nps

Source: U.S. Environmental Protection Agency

SWANCC LISTS RECYCLING OPTIONS FOR ELECTRONICS DISPOSAL

Under the Illinois Product Recycling and Reuse Act, certain electronics which include computer items are prohibited from being thrown away in the garbage. The Solid Waste Agency of Northern Cook County offers an At Home Pick Up Program for electronics. Residents who live in a single family home with street level access to a front door may have items picked up from their front steps rather than drive to a drop off location or wait in line at an event.

To make arrangements and see a complete list of acceptable electronic items, visit www.swancc.org or call 724-9205, ext. 9. A \$30 fee via credit card offsets program costs of up to six acceptable items. Additional devices may be added for \$5 each. No single item may exceed 50 pounds and televisions are limited to 27 inches. Items must be placed at the front door by 7:30 a.m. No pickups are allowed for schools, businesses or institutions. The program runs from May through September only.

Need information on upcoming one day drop off events and permanent drop off locations for electronics recycling, document destruction, and household chemical waste? Contact the Solid Waste Agency of Northern Cook County, 724-9205, or visit www.swancc.org.



Residents May Rent Refuse Cart, Upgrade Recycling Carts by Size

Village residents who live in single family households now have the option to rent 95 gallon refuse carts directly from Groot for an annual fee of \$30. The cart fee is subject to an annual increase per the service agreement. Payment in 2012 will be required for a prorated amount prior to cart delivery. In January 2013, Groot will invoice cart rental subscribers annually.

Refuse cart rental is optional. Residents may continue to bag all refuse for unlimited collection. There are also 65 and 35 gallon refuse carts available. Only carts provided by Groot are permitted for use and additional bagged refuse may be placed outside the cart.

Palatine residents who wish to increase the size of their recycling cart may do so at no charge by calling Groot.

To view sample cart sizes (95, 65, and 35 gallon carts) visit Village Hall, Main Lobby, at 200 E. Wood Street. Please keep the refuse and recycling carts four feet apart at the curb for automated collection.

Call Groot, 800-244-1977, to order your refuse cart or larger recycling cart today.

RECYCLE BATTERIES AT VILLAGE HALL

The Environmental Health Division is collecting spent household batteries through a program sponsored by the Solid Waste Agency of Northern Cook County. Illinois Environmental Protection Agency sponsored Household Chemical Waste events are no longer accepting alkaline batteries due to their benign nature and the associated high recycling costs. Rechargeable batteries contain heavy metals which pose a threat to the environment and have a marketable recyclability.

Eligible household batteries include alkaline batteries (AA, AAA, C, D, 9V and button cell) and rechargeable batteries (NiCad, NiMh, lithium ion and lithium polymer).

Prior to dropping off rechargeable batteries, residents must cover the contact points on each rechargeable battery with masking tape or place each battery in an individual self-locking plastic bag. Battery contact points should not touch each other during collection or transportation because of fire hazards. This is not necessary with alkaline batteries.

Batteries from schools, businesses, institutions or groups are ineligible for this program. Battery collection boxes are located in the main lobby of Village Hall, Monday through Friday from 8 a.m. to 5 p.m. For more information, contact the Environmental Health Division, 359-9090, or visit www.palatine.il.us.



Bike Laws Require Motorists to Move Over

Motorists "squeezing by" bicyclists create a dangerous situation by giving no maneuvering room for bikes to avoid hazards. Illinois law requires a motorist who is overtaking a bicycle to leave a safe distance, but not less than three feet, when passing the bicycle. The motorist must maintain that distance until safely past the overtaken bicycle.

These and other rules of the road help to keep both motorists and bicyclists safe. Visit www.bikelib.org for more information.

PALATINE POLICE

Village of Palatine
200 E. Wood St.
Palatine, IL 60067

PRSR STD
U.S. Postage
PAID
Palatine, IL
Permit No. 2855

*****ECRWSS**
POSTAL CUSTOMER

Police Headquarters Comes in Under Budget

The Palatine Police Department Headquarters came in under budget by \$732,000 with a few more adjustments anticipated in the near future. The 70,000-square-foot building located at 595 N. Hicks Rd. had close to a \$22 million price tag, but by reviewing and adjusting \$1,155,568 in allowances and keeping down excess demands, the project came in under budget.

The Police Department moved into the facility in January and hosted an open house for the community in early April.

PALATINE VILLAGE HALL
WILL BE CLOSED ON:

WEDNESDAY, JULY 4
IN OBSERVANCE OF INDEPENDENCE DAY

MONDAY, SEPTEMBER 3
IN OBSERVANCE OF LABOR DAY

STREET FEST AUGUST 24-26

www.palatinestreetfest.com

FRIDAY, AUGUST 24
5PM-MIDNIGHT

FEATURING:
ROCK CANDY
SIXTEEN CANDLES



SUNDAY, AUG. 26
11AM-8PM

FEATURING:
AMERICAN ENGLISH



SATURDAY, AUG. 25
11AM-MIDNIGHT

FEATURING:
RALPH'S WORLD • WEDDING BANNED



**FEET FEST 3K FUN RUN/WALK • CYCLE FEST • COMMUNITY BINGO
KIDDIE GAMES • PALATINE CUISINE • KIDS ENTERTAINMENT • NON-PROFIT ORGANIZATIONS**

BMO  Harris Bank



93.1 XRT
CHICAGO'S FINEST ROCK™

MARIANO'S
Fresh Market™
Shop well. Eat well. Live well.™

**VILLAGE OF
PALATINE**

