

Happy 140th
Birthday, Palatine!

Village of Palatine Newsletter

June 2006

Street Fest Celebrating Seven Years of Hometown Summer Fun August 25-27!

It's almost that time again! Downtown Palatine Street Fest will be back for it's 7th year on August 25, 26, and 27. The event will span Slade Street from Plum Grove Road to Smith Street.

With so much to do and see, including Feet Fest, the Jessie White Tumblers, Big Head Todd and the Monsters, face painting, fire prevention demonstrations, and police bike races, not to mention great food from Palatine restaurants, you won't want to miss out on the fun! Come and enjoy the main stage acts, family entertainment, food from local restaurants and much more.

Check out the village website for the most up to date information at

www.palatine.il/streetfest

Mark your calendar today and plan to invite friends and family to enjoy this great close-to-home summer celebration! Hope to see you there!



Street Fest fun is for everyone!



A Great Season of Summer Fun for the Family is About to Get Underway in Palatine!



If you're looking for fun-in-the-sun activities with something to please everyone in the family, Palatine is the place to be!

The 15th season of the popular Palatine Farmers Market is already underway, offering everything from organically grown vegetables to fresh breads and pastas, herbs, flowers and more. Check page 5 of this newsletter for details.

"Art in Motion" on June 24 will feature music, poetry, dance, a kids craft tent, an arts and crafts fair, raffle prizes and more. Read all about it on page 8.

The Palatine Jaycee's 49th annual 4th of July festival will once again bring a fabulous family event to Community Park from June 30-July 4. You'll find a great musical entertainment lineup, as well as food and beverages, games and rides. Can't get enough of those carnival rides? Then take advantage of wristband days on July 1, 2 and 3 when you can enjoy unlimited rides from 12:00 noon-5:00 p.m. for one low price. The parade steps off at 10:00 a.m. on Saturday, July 1. Bring a blanket or lawn chairs to enjoy the fireworks display at about 9:00 p.m. on Monday, July 3. You'll find the complete schedule of events on page 3.

Before the summer winds down, there's one more great home town event for the family to enjoy -- Street Fest 2006 from August 25-27. This marks the seventh year for Street Fest, and organizers promise that all of the old favorites will be back, plus some new additions that are sure to be crowd pleasers! Be watching for complete details in the August edition of the Village Newsletter.

Nominate a Beautiful Palatine Property For 2006 Hometown Pride Award

The 2006 Hometown Pride Award will honor properties in Palatine that have beautiful landscaping and exceptional curb appeal. Perhaps your home, or the home of a friend or neighbor, should be entered in this year's competition. Don't be shy about entering any home that is a joy to the eye and an asset to the community!

In order to expedite the judging process, one 4x6 photograph must accompany the nomination. Residents are invited to nominate any property – your own, a neighbor's, or a business whose curb appeal/landscaping is a real asset to the appearance of the community. Simply fill out the form below, enclose the photograph, and return both to the Village of Palatine Administration Department by Friday, July 21, 2006.

Judging will take place on Saturday, July 29th. Winners will be notified by mail shortly thereafter.

PLEASE NOTE: Judges are looking for "curb appeal", and will be considering ONLY the front of property visible from the street.

Village of Palatine Hometown Pride Award Nomination Form

Category

- Single family home
- Multi-family residence
- Subdivision entrance/Cul-de-sac island
- Business



The 2005 first place subdivision winner!

Address Location: _____

Contact person (if known) _____

Phone number (if known) _____

Return form with one 4 inch by 6 inch photo by 4:30 PM, Friday, July 21, 2006 to:

Village of Palatine
Hometown Pride Award
200 E. Wood Street
Palatine, IL 60067



REMEMBER: A photograph of the property must accompany this form in order for the property to be judged. Photos will not be returned

Display 2006-2007 Vehicle Sticker by July 1

Residents within the corporate limits of the Village of Palatine are reminded that the 2006-2007 Vehicle Sticker must be displayed on your vehicle by July 1, 2006. Stickers may be purchased in person, by mail, or by using the 24-hour drop box at the Village Hall.

COST

The vehicle sticker covers the period from July 1, 2006 through June 30, 2007. The price if purchased during the month of June, for passenger cars is \$25.00. Purchased on July 1 and after, the price is \$35.00 per passenger vehicle.

DISCOUNTS FOR DISABLED RESIDENTS, VETERANS & SENIOR CITIZENS

A vehicle sticker is available at the reduced rate of \$5.00 if one qualifies as a disabled veteran (proof by vehicle registration), holder of handicapped license plates issued by the State of Illinois (proof by authorization from the Secretary of State of Illinois) or as a senior, 65 years or older. There is only one reduced rate vehicle sticker per household.

DON'T FORGET THAT FLUFFY AND FIDO NEED A LICENSE, TOO!

Village ordinance requires that all dogs and cats be licensed and wear tags. Animal licenses are \$6.00 per pet, and must also be purchased by July 1. A current rabies vaccination number is required for purchase.

HOURS

Village of Palatine office hours:
Mon.-Fri. 8:00 a.m. – 5:00 p.m.
Sat. (June only) 8:30 a.m. – 12:00 p.m.

Planning a Garage Sale?

Spring cleaning often gets us thinking about having a garage sale. It's a great way to clean out the closets and make a few dollars ... and even meet your neighbors.

Remember that garage sales are limited to not more than 12 hours per day for a maximum of three consecutive days. Village ordinance also limits each residence to a maximum of three garage sales per year.

No permit is required.



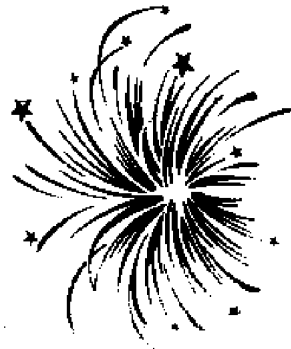
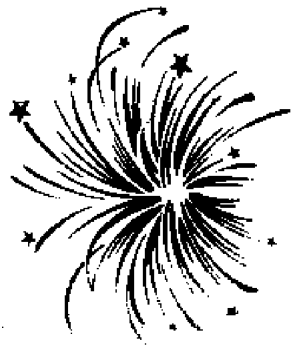
The Palatine Jaycees

present the 49th annual

4TH OF JULY FESTIVAL "Hometown Fest"

Community Park ★ June 30 - July 4

PARADE ON JULY 1 ★ FIREWORKS ON JULY 3



Friday, June 30

Special Needs Carnival
Carnival/food/beverages
Beer Tent

2:30 p.m. - 4:00 p.m.
5:00 p.m. - midnight
5:00 p.m. - 11:30 p.m.

Saturday, July 1

Parade
Food, entertainment
Beer Tent
Arts and Crafts Fair/
Business Expo
Kids Corral
Carnival
Wristbands

10:00 a.m.
11:00 a.m. - midnight
11:00 a.m. - 11:30 p.m.

11:00 a.m. - 6:00 p.m.
12:00 noon - 4:00 p.m.
12:00 noon - midnight
12:00 noon - 4:00 p.m.

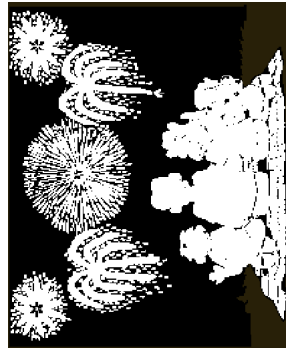
Sunday, July 2

Food, entertainment
Beer Tent
Bingo
Carnival
Wristbands
Arts and Crafts Fair/
Business Expo
Kids Corral

11:00 a.m. - midnight
11:00 a.m. - 11:30 p.m.
11:00 a.m. - 5:00 p.m.
12:00 noon - midnight
12:00 noon - 4:00 p.m.

11:00 a.m. - 6:00 p.m.
12:00 noon - 4:00 p.m.

For more information on additional 4th of July activities, tune into 1660 AM on your radio dial. This Village-owned station will also be used to provide information in times of emergencies and disasters.



PARADE ROUTE

Monday, July 3

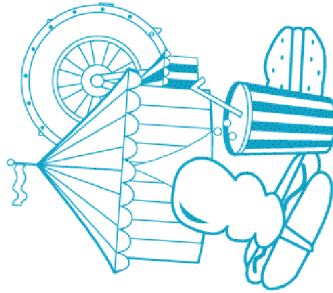
Food, entertainment
Beer Tent
Carnival
Wristbands
Donation Collection
Fireworks!

11:00 a.m. - midnight
11:00 a.m. - 11:30 p.m.
12:00 noon - midnight
12:00 noon - 4:00 p.m.
7:00 p.m. - 9:00 p.m.
9:00 p.m.

Tuesday, July 4

Family Day
Food, entertainment
Carnival
Wristbands

12:00 noon - 4:00 p.m.
11:00 a.m. - 5:00 p.m.
12:00 noon - 5:00 p.m.
12:00 noon - 5:00 p.m.



**KIDDIE
& ADULT
RIDES**



**bands to be announced --
watch local newspapers**

You Can Help Prevent West Nile Virus Through Reporting



What is West Nile Virus?

West Nile Virus is an infection carried by mosquitoes. The virus is transmitted through the bite of a mosquito that has picked up the virus by feeding on an infected bird. Human illness occurs when a person is bitten by an infected mosquito. Residents play an important role in monitoring for West Nile virus by reporting dead birds and standing water to the Village of Palatine and the Northwest Mosquito Abatement District.

Dead Bird Reporting

Changes have recently been made to the birds accepted for testing and reporting for the monitoring of West Nile Virus in the area. Reporting will assist in the prevention, monitoring, and use of control measures to minimize the spread of the virus. Report all dead perching birds such as crows, blue jays, grackles, starlings, sparrows, finches, robins, cardinals, swallows, mockingbirds, warblers and wrens to the Environmental Health Division at (847) 359-9090.

It is important to also report any of these birds that have been dead for less than 24 hours which may be submitted in limited numbers.

staff for testing. Staff will identify and determine if the bird will be collected for testing. Birds not collected for testing should be double bagged and disposed of in the garbage. Avoid handling any dead birds directly and always wash hands with soap and water.

Standing Water Reporting

To eliminate mosquito breeding, report any water sources on or near your property that hold water for greater than 7 days to the Northwest Mosquito Abatement District at (847) 537-2306 or online at www.nwmadil.com. In addition, report properties which fail to remove standing water after 7 days from items such as tires, swimming pools, birdbaths, boats, clogged gutters and containers to the Environmental Health Division at (847) 359-9090.

For Further Information

For further information please contact the Environmental Health Division at (847) 359-9090 or online at www.palatine.il.us and the **Northwest Mosquito Abatement District** at (847) 537-2306 or online at www.nwmadil.com.

Come to the Lawn Care Buy-Back!



The Village of Palatine is hosting a Lawn Care Buyback and a Gas Can Replacement program for our residents. This "green" initiative will take place on Saturday, July 15 from 9:30 a.m. until 2:30 p.m. at the Palatine Public Works Facility, 148 W. Illinois Avenue. This program is designed to encourage the use of electric (cord or battery) operated lawn care equipment (mowers, trimmers, blowers, chainsaws, etc.). The program offers a rebate when your old equipment is turned in on the day of the event. Rebates will be:

gas mowers of up to \$150

other gas operated equipment up to \$50

The Gas Can Replacement will involve bringing in your old can and exchanging it for an environmentally friendly can with an automatic shut off pour spout and is restricted from emitting fumes into the atmosphere.

Village of Palatine residents are encouraged to voluntarily participate in this worthwhile program. (Note: this program is not intended for businesses or contractors.)

Play a Role in Cultivating the Arts In Your Community! Join the Palatine/Inverness Arts Council!

The Palatine/Inverness Arts Council (PIAC) is a not-for-profit volunteer organization committed to encouraging the highest aspirations in all artists and their endeavors. Your support helps bring the following artistic opportunities and more to our community:

- Little Picassos** - Bilingual visual art program.
- Youth Art Calendar Contest** - Everyone's favorite calendar mailed to your door!
- Art in the Square** - Annual Juried Fine Art Show held in September, around the gazebo in Towne Square.

PIAC encourages your support! For more information about joining or volunteering please visit www.palatineinvernessarts.org or call (847) 963-6451.



PALATINE/INVERNESS ARTS COUNCIL

Palatine Farmers Market Opens 15th Season With Finest in Fresh Produce, Breads, Pastries, Pasta, Teas, Herbs, Nuts and More!

The Palatine Farmers Market opened its 15th consecutive season on June 10 with popular new vendors, unique offerings from local community groups, and a great new service from the University of Illinois Extension Master Gardeners.

The Farmers Market is open every Saturday from now through October 21 at the Palatine train station. Hours are 7:00 a.m.-1:00 p.m.

New vendors joining popular favorites from past years include Dea Dia Organics, featuring certified organic veggies; Nuttin's Impossible, offering 40 varieties of nuts and seeds, including flavored and spiced nuts; and That Pickle Guy, who has been extremely popular at other farmers markets and has now added the Palatine Farmers Market to his venues.

Back again by popular demand are vendors offering Michigan blueberries, fresh baked goods, dry mixes for soups and dips, Indiana produce, sea salt from France, international teas, freshly cut flowers and pottery. You'll even find buffalo meat and special treats for the special pooch in your life at the Market.

The University of Illinois Extension Master Gardeners are offering a great service to local residents, according to Market Master Marg Duer, who brought the Farmers Market to Palatine 15 years ago.

"Any resident who has a struggling plant is welcome to bring a cutting to the the Market and have the Master Gardeners examine it," Duer said. "If they can't identify the problem and recommend a solution for it on the spot, they will take it with them, have it analyzed by experts at the University of Illinois, and bring a written report back to you at the next week's Market."

As if the finest fresh produce, breads and pastas weren't enough, several community groups have teamed up with the Farmers Market. Volunteers from the League of Women Voters register voters on site; the Palatine/Inverness Arts Council, which supports local arts, is presenting "Art in Motion" on June 24 and is working to save the historic Patten House; the Sister Cities Association of Palatine is on-site to promote its relationship with Fontenay-le-Comte France for cultural, economic and educational exchanges; and the Positive Strokes Art School offers activities and events for artists of all ages.

Upcoming special events at the Farmers Market include a pet parade on July 15; the Audubon Society's feathered friends on July 22; a tea tasting on July 29, and Daylily Day on August 12. Check the Village's website, www.palatine.il.us for a complete list of upcoming events.



Planning a Home Improvement Project This Summer?

If you are planning a home improvement project that involves structural changes to your home -- such as building a deck, enclosing a porch, adding a bedroom, remodeling a basement, or converting a garage-- you will need a building permit.

The Village of Palatine requires a building permit for both indoor and outdoor structural work, freestanding structures such as a fence, shed, or pool, as well as major changes to the living area of the home.

The permit process ensures that minimum safety standards are met and that the construction meets local building and zoning requirements. It also ensures that your contractor is registered and bonded with the Village. Make sure you fully understand the building codes and local ordinances before proceeding with a major home improvement project. Our Building Department staff is available to answer your questions. Call or stop by and we'll be glad to help.

A building permit is required for the following residential projects:

- Replacing a roof (tear off)
- Building a new deck or replacing an existing one
- Most demolition work
- Adding a fireplace
- Adding a room or remodeling a basement
- Replacing an electric stove with a gas model
- Adding to or altering the electrical or plumbing system
- Installing a new driveway or replacing an existing one
- Building a new fence or replacing an existing one
- Replacing an air conditioning or heating unit
- Replacing or adding a sidewalk
- Installing a swimming pool or hot tub

A permit is not required for the following:

- Replacing portions of the roof with the same material
- Painting interior or exterior walls
- Replacing a window or door within the same frame
- Installing new flooring
- Replacing a faucet or plumbing valve



Most contractors will apply for the necessary permits as part of contracting the job. Spell it out in your contract if you want to be sure the contractor obtains the required permits.

If you have any questions about permits or requirements, call the Village's Building and Inspection Services Department at (847) 359-9042.

Don't be Blinded by the Dangers of Fireworks

Did you know that most fireworks are illegal in the State of Illinois? And for good reason -- fireworks cause burns, blindness, and even the loss of fingers or a hand. In other words, they are dangerous.

Generally speaking, if it explodes, shoots a flame, or goes up in the air (such as a bottle rocket), it is illegal. **All sparklers are illegal in Palatine.** It also takes matches and lighters to ignite the fireworks. To a young child this looks like fun. The child may then find matches and experiment with them. The results of match play can be deadly.

One out of every three injuries to the eye is caused by fireworks, and one-quarter of those injuries result in permanent blindness. The most common injuries occur to the fingers/hand and eye. The types of fireworks causing those injuries are firecrackers and bottle rockets.

An average of 11,000 people per year are injured severely enough to require hospital treatment, and over 30,000 fires are attributed to fireworks. The majority of fireworks injuries involve victims under the age of 15; hundreds of those are preschool-aged children.

Wild Babies . . . Even if They're Alone, They're Not Orphans - Mom is Most Likely Out of Sight Nearby

The arrival of springtime brings an abundance of new life...baby squirrels, birds, bunnies, and more.

Often you might see a young animal, but not its parent. They are unlike human parents who hover around their young. These parents may be nearby but not visible to us. For example, rabbits normally feed their young at night so you might never see Mom even though she might be in the immediate area. The absence of a parent within view leads many people to believe that the bunnies have been abandoned. At about two weeks of age, bunnies are independent and leave the nest. So if you see bunnies romping around a field, they are just testing their new found freedom. Although they are cute and furry, please teach your children to respect animals and not pick them up. Obviously they are living creatures, not toys, and can be injured when being handled by children. An animal that is simply defending itself may bite when picked up. Shallow holes in your lawn covered loosely by grass clippings may be bunny nests, so take care when mowing. If you have a pet, you may want to put up a small temporary barrier to keep him from picking up the bunnies. Baby bunnies can be unintentionally injured or killed by household pets that are simply investigating the strangers in their yard.

If you are fortunate enough to have a pond or lake near your home, you may often see geese or duck families. They often leave the water to go exploring on dry land. People may occasionally see a duckling or gosling alone in the pond and mistakenly believe it has been abandoned. They remove the animal from its environment, take it home and call Animal Control.

Yes, sometimes the young offspring are left behind temporarily, but the parents do return. If the animal is in your home, the mother won't know where to find her baby when she returns. If the duck or goose is actually found dead or injured, that would be the time to notify Animal Control. Extremely young injured offspring are transported to a wildlife rehabilitator. They are cared for until old enough to be released in the wild.

Squirrel nests are often blown out of trees. If you see a nest on the ground, just put it back in the nearest tree. Place it in a high spot to prevent injury from other animals. Many times baby squirrels do fall out of their nest. Mom will pick her baby up and return him when she realizes he is missing. At about two to three months, squirrels are old enough to leave their nest. Squirrels are also known to build their nests in motors when the vehicle has not been driven for a long time. Always open up the hood carefully and look for nesting material before you start the engine. Many baby squirrels have been injured or killed by an unsuspecting motorist starting an engine. When the nest is disturbed, Mom will carry her young to a new spot. If you do not see the animals, you may carefully remove as much nesting material as possible to persuade the squirrel family to relocate. If you need assistance, dial 911 and ask for Animal Control.

Young birds with downy feathers just learning to fly are often seen near the base of trees. Again, they should be left alone. Mom will come along and feed them until they "earn their wings" and venture out on their own. If you have reason to believe the baby has been abandoned, it is better to leave the baby bird exactly where



it was found and call either a licensed rehabilitator or Animal Control for information, rather than pick it up and bring it indoors. Never feed a young animal. Any food you give it could be harmful since its digestive system may not be fully developed. Only if you believe it is in immediate danger should it be removed from the area. You may place the bird in a box in a dark, quiet area to prevent further stress until you get professional assistance. If the bird is visibly injured, call 911 and ask for Animal Control.

Don't even be misled into thinking you can raise a cute furry wild animal by keeping it as a pet. Their dispositions change as they grow older, and they may no longer be docile. They are simply being what they were born to be ... WILDLIFE.

If you need a wildlife rehabilitator referral, contact Animal Control or check the Internet.

'Art in Motion' on June 24 Features Music, Poetry, Dance & More!

The Palatine/Inverness Arts Council will present the first ever Art in Motion Festival on Saturday, June 24th from noon until 7:00 p.m. at Community Park's Fred P. Hall Amphitheater. Plan to spend the afternoon enjoying the following performances in the Main Stage:

- 12:00 JP Wood Martial Arts Demonstration
- 12:45 Ian Robinson's Jazz Combo
- 1:15 Play Reading by members of Wood Street Theater
- 1:45 Musical Selections by members of Wood Street Theater
- 2:15 Music on Stage
- 3:15 Poetry Slam Team of Palatine
- 4:00 Flamenco Class from Dance Express
- 4:45 Improv by Illinois Mechanics Union
- 5:30 Gabriela Carrillo, Musical Performer and Actress
- 6:30 Michael Herndon, Performer and Teacher

Art in Motion will celebrate art in all forms by providing an interactive day of performances and demonstrations for public enjoyment. Art in Motion will also feature a kids' craft tent for all ages, a fine Arts & Crafts Fair, raffles, prizes, food and beverages.

R. Franczak & Associates Developers is sponsoring the main stage performances and Inverland Russell is sponsoring the kids' craft tent. Other supporters include the Palatine Park District, Plum Grove Printers, American Legion Post 690, Positive Strokes Art School and Gallery, and ElizEvents.



For additional information, contact the Palatine/Inverness Arts Council at (847) 963-6451, write to P.O. Box 1541, Palatine, IL 60078, or view online at www.palatineinvernessarts.org.

Residents of Sister City Fontenay-le-Comte Roll Out the Red Carpet for Guests from Palatine

Marg Duer, Palatine Sister Cities Association Founder and President, led a delegation of Palatine residents on an event-filled 10 day visit to our Sister City, Fontenay-le-Comte, France in mid-June.

The trip was timed to coincide with Fontenay's annual celebration of its Sister Cities partnership with Palatine and four other cities in Spain, Romania, Poland, and Africa. Part of the celebration included dedicating a traffic circle to Palatine in honor of the 10 year Sister City relationship between the two towns.

While in France, the visitors from Palatine visited a dried flower production site, and toured a French lavender facility where lavender is produced for a number of uses including aroma therapy, perfume, cooking and soap. The trip was especially well timed for enjoying France's spring and summer flowers and gardens which were at their peak.

"The people of Fontenay-le-Comte offered their gracious hospitality to all of us," Duer said. "We enjoyed staying in their homes, and sharing meals, activities, sight-seeing, and friendship."

Fontenay is located four hours by train or car south west of Paris. The Sister City relationship is designed to promote exchanges in economic development, global youth forum, plein air art, work/study internship, culinary art, music, language immersion, and education.



'Pandemic Flu': What is It, and What Do You Need to Know to Protect Your Family?

The recent made for TV movie, "Fatal Contact: Bird Flu in America" brought to light a "worst case scenario" of a Pandemic Flu sweeping across the world. Although the producers took artistic license in making this movie, it addressed many aspects of what could happen should the "bird flu" mutate so it is transmittable from human to human. To date, that has not occurred according to the World Health Organization (WHO) although experts are watching for this to occur.

All over the world the risk of a pandemic flu outbreak and its potential catastrophic impacts are being assessed by countries, states, local governments and medical professionals. In Palatine planning for this emergency has been ongoing for several months. The Village has an Emergency Operations Plan (EOP) which is designed to deal with emergency situations. The ability of the Village to be able to provide on-going services to its residents should a pandemic flu strike are of primary importance in our continued planning efforts.

So what exactly is a pandemic flu?

A pandemic flu is a fast-spreading epidemic that affects most if not all countries and regions of the world. Once a fully contagious virus emerges, its global spread is considered inevitable.

What can you do to decrease your risk in contracting this flu?

There are a number of relatively easy steps you can take to help prevent contracting this strain of flu or even the annual flu. These include:

- Washing your hands frequently with soap and warm water for at least 20 seconds.
- Use alcohol based hand sanitizers if soap and water are not available.
- Avoid touching your eyes, nose or mouth.
- Cover your mouth and nose when you cough or sneeze but do not use your hand. Cough or sneeze into your sleeve or tissue. The tissue should then be disposed of properly.
- Avoid large crowds whenever possible.
- Do not go to work when you are sick.
- Do not send a sick child to school or to day care.
- Avoid close contact with those that are ill.
- Eat a healthy diet and exercise regularly.
- Get an annual flu shot. (The current vaccine however will not protect you against the current H5N1 strain.)
- Do not use bare hands to touch any non domestic birds especially those found sick or dead.
- If traveling, avoid open-air markets where poultry or other birds are present.

(Continued on next page)




'Pandemic Flu': What You Need to Know

(Continued from previous page)

Unlike the ordinary, annual flu which usually affects the very young, the elderly and those with chronic illnesses the hardest, a pandemic can impact all ages.

Because it is unknown what strain the flu may mutate into, there is no current vaccine available although work is being done to develop one. Once the specific flu strain is identified, a vaccine may not be available for up to six months. Additionally, antiviral drugs such as Tamiflu, may become resistant to the flu and are already in short supply.

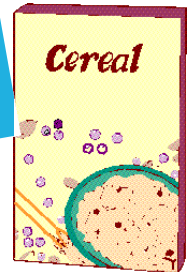
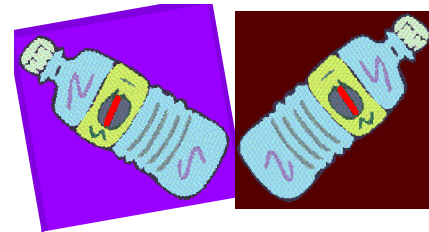


clip & save 

One of the potential fallouts from a pandemic, is the disruption of supply lines. If a significant portion of the work force is affected, grocery, water and pharmaceutical deliveries may be interrupted or halted.

So what additional steps can you take now to prepare?

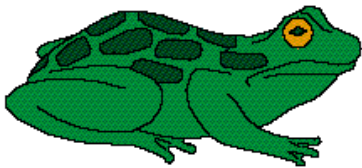
- Have an ample supply of water on hand. (Remember the average person needs one gallon of water a day.)
- Stock sufficient food for you and your family. Items such as canned soups, meats and vegetables, cereals, nutrition bars and the like will store best.
- Have a three months supply of prescription medications on hand.
- Have non-prescription drugs such as aspirin, cough and cold medicines and vitamins in sufficient supply.
- Educate yourself on the signs and symptoms of a pandemic flu and precautions you can take by visiting credible websites such as the Center for Disease Control (www.cdc.gov), the World Health Organization (www.who.org), and Pandemicflu.gov (www.pandemicflu.gov).
Note: The signs and symptoms of the ordinary flu are similar to those of a pandemic flu.



For more information on the pandemic flu, please visit these websites or go to www.palatine-ema.org for a more complete list:

www.pandemicflu.gov
www.cdc.gov/flu/avian
www.cookcountypublichealth.org/programs/communicable/Flu/avianflu





It's Not Easy Being GREEN ... But We're Part of the Illinois Green Fleet Program and Committed to Doing Our Part for the Environment!

In a small attempt to reduce our country's dependence on foreign oil, the Village has been operating all our diesel powered trucks and equipment on B20 Biodiesel since March, 2000. Biodiesel consists of 80% diesel fuel and 20% virgin soy bean oil. The fuel, when used as a mix with standard diesel fuel, enables the trucks to run cleaner as well as use fuel more efficiently. Another advantage is reduced engine wear due to increased lubricity of engine parts.

The Village currently has a total of 73 vehicles that are using this fuel. The Palatine Park District has "gone green" as well, and is currently purchasing this special fuel from the Village for all of their diesel equipment.

The Village has used approximately 360,000 gallons of B20 over the last six years – a total of 72,000 gallons of a renewable fuel – helping to preserve our natural resources, and reduce the amount of hydrocarbons emitted into our fragile atmosphere. This fuel is also a boost to the country's agriculture economy.

In addition, the Village now also operates five vehicles on E85 Ethanol fuel. Ethanol is also a renewable fuel supplied from Illinois producers and distilled from corn and corn stalks. We have our own underground storage and dispensers for these two fuel products.

As another part of the Village's "Green" strategy, we have become a certified member of Clean Air Counts (CAC), a project of the Metropolitan Mayors Caucus, representing the six county metropolitan area; U.S.EPA

Region V; the City of Chicago; and the Illinois EPA. Through CAC the Village of Palatine is able to receive grants to fund a variety of

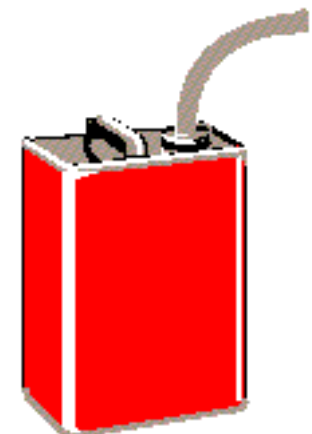
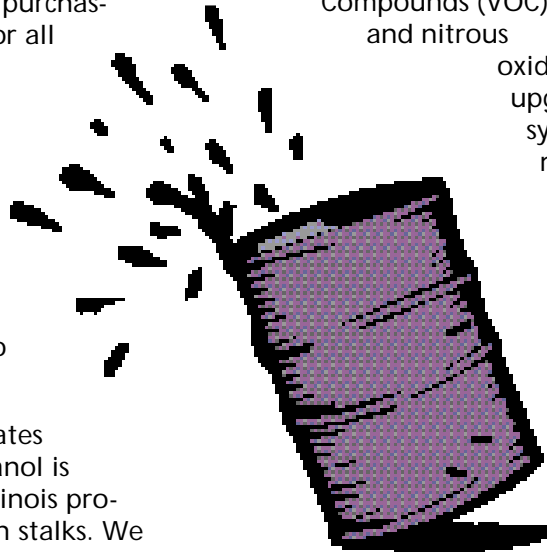
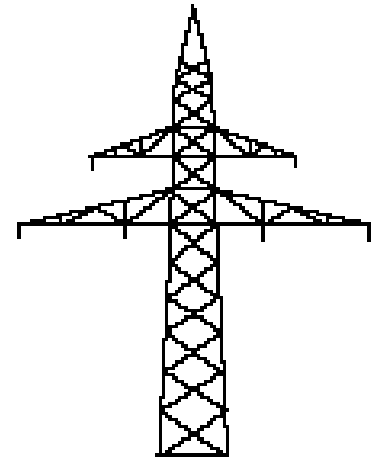
efforts to reduce smog, making our environment a bit cleaner.

One such effort was retrofitting 16 of our Village snow plow/dump trucks with a catalytic muffler meant to further reduce emissions of Volatile Organic Compounds (VOC) and nitrous

oxide (NOx). We have also upgraded our buildings' lighting systems, replacing all fluorescent magnetic ballasts with electronic T-8 configuration. These are just two of many "green" projects we have completed or have in process.

Palatine businesses are encouraged to "go green" by becoming certified in the Clean Air Counts Campaign through following the Village's example and committing to taking major steps to make our environment healthier.

Reducing electricity consumption with updated lighting alternatives, carpooling, cutting back on volatile organic compounds with non VOC paints, cleaning compounds, and building materials, converting to alternate fuels and/or retrofitting to lower emissions below EPA standards, use of natural landscaping, limiting pesticide and fertilizer use are some of the many options that will improve our environment today and tomorrow.



Stay Safe While Having Fun on the Water

Many of us like to stay cool and have a good time by getting away to a lake, river or beach during the summer. It's great fun but it can, unfortunately, also lead to tragedy for those unprepared for the dangers that are always part of any water-related activities. Drowning is a leading cause of accidental death for children and young adults. Even a strong swimmer is no guarantee of safety.



Boating accidents, hypothermia, and riptides can all contribute to drowning. The best defense on the water is to wear a properly-fitted life vest, called a Personal Flotation Device, or PFD. These not only help you stay afloat, but they can also help keep you warmer in cold water. PFDs need to be Coast Guard approved, and need to be properly fitted to the wearer. Inflatable toys and "water wings" are NOT PFDs. While wearing a PFD on a boat is required for children 12 and under, it is a good idea for everyone to wear a vest while boating. Kids learn by watching their parents, so it's important to set a good example.

Boating accidents, hypothermia, and riptides can all contribute to drowning. The best defense on the water is to wear a properly-fitted life vest, called a Personal Flotation Device, or PFD. These not only help you stay afloat, but they can also help keep you warmer in cold water. PFDs need to be Coast Guard approved, and need to be properly fitted to the wearer. Inflatable toys and "water wings" are NOT PFDs. While wearing a PFD on a boat is required for children 12 and under, it is a good idea for everyone to wear a vest while boating. Kids learn by watching their parents, so it's important to set a good example.

The Palatine Fire Department, in cooperation with the BOAT/US Foundation, provides Coast Guard approved PFDs in a range of children's sizes for short-term loan at no cost. The vests are available to fit children up to 29 pounds with a chest size up to 29 inches. Some basic information, including a driver's license number, is all that's needed to check out a vest for up to two weeks. Remember to bring your child(ren) with you if possible to ensure they are properly fitted. If you only need a vest once or twice a year, this is a great alternative to purchasing one!



For more information on the program, call the Fire Department at (847) 202-6340 during regular business hours. For more information on water safety in general, call our Public Education office at (847) 202-6302.

Vests are available at the following locations:

- ◆ Fire Station 17, 220 W. Illinois Ave.
- ◆ Fire Station 18, 39 E. Colfax St.
- ◆ Fire Station 19, 1475 N. Hicks Rd.
- ◆ Fire Station 20, 987 E. Palatine Rd.

Stay safe while having fun this summer. Always wear your PFD on or around the water.

Remember, **"They float, you don't!"**

Village of Palatine

This newsletter is published by
The Village of Palatine
200 E. Wood Street, Palatine, Illinois 60067
Village Hall: (847) 358-7500 ♦ Village Action Line : (847) 705-5200
E-mail: village@palatine.il.us
Home page: www.palatine.il.us

Palatine Elected Officials

Rita L. Mullins, Mayor
Margaret R. Duer, Village Clerk

Michael E. Jezierski, District 1
Jim Wilson, District 2
Daniel A. Varroney, District 3
Greg Solberg, District 4
Jack Wagner, District 5
Brad Helms, District 6

Phone numbers

(847) 359-4854
(847) 359-9051

(847) 359-3573
(847) 934-0027
(847) 359-6479
(847) 358-0531
(847) 358-3766
(847) 894-0006

E-mail

rmullins@palatine.il.us
mduer@palatine.il.us

mjezierski@palatine.il.us
jwilson@palatine.il.us
dvarroney@palatine.il.us
gsolberg@palatine.il.us
jwagner@palatine.il.us
bhelms@palatine.il.us

Village Manager

Reid Ottesen

(847) 359-9031

rottesen@palatine.il.us



Kaye Lowman Boorum,
Newsletter Editor

Presorted
Standard
U.S. Postage
PAID
Permit No. 2855
Palatine Illinois

*****ECRWSS**

POSTAL CUSTOMER
Palatine, Illinois